



PRICED AT  
**\$446,670**

 **1752 Sq Ft**

 **3 Beds**

 **2.5 Baths**

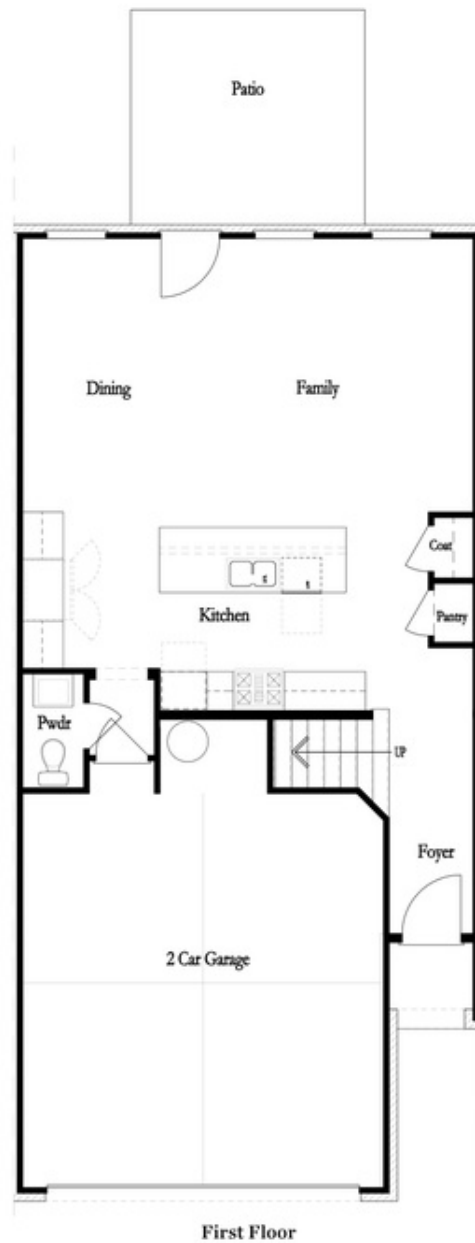
 **2 Car Garage**

 **2.0 Story**

Elevate your life in 2023 with a new home by The Providence Group and \$5,000 towards closing cost when financing with one of Seller's 4 preferred lenders. Don't Miss out on this **END UNIT!!!\*\*\*\*** The Brittany by The Providence Group - is our brand new 2 story townhome floor plan includes the Cool Stone Design Collection with beautiful neutral tones. Enjoy this open 1st floor featuring a designer kitchen, family room and dining area. The gourmet kitchen will have beautiful quartz countertops, a tile backsplash and stainless appliances. You have a sliding door upgrade to go out onto your quaint, fenced private backyard. On the 2nd floor, you will enter a spacious owner's suite, enjoy the upgraded Tub and a Shower along with a huge walk-in closet. The laundry room is located in the hallway on the upper level along with 2 secondary bedrooms and shared bath. This community is in a highly desirable location in unincorporated Gwinnett County and close to 3 vibrant cities - downtown Sugar Hill, Suwanee Town Center and Buford!! Incredible amenities will be Gated, Pool, fitness center, Parks and Green Space with coffee bar. Easy Access to interstates, shopping and restaurants. Inquire about closing cost ...

Want to Know More  
About This Home?

CONTACT OUR COMMUNITY SALES MANAGER  
Call Us @ 470.248.2097



Want to Know More  
About This Home?

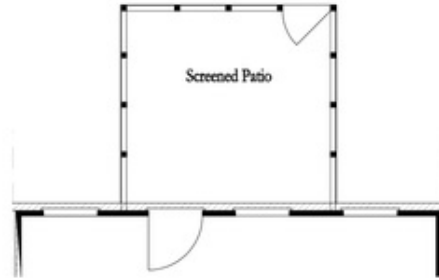
CONTACT OUR COMMUNITY SALES MANAGER  
Call Us @ 470.248.2097

First Floor Options



Patio

8' Slider Door



Screened Patio

Screened Patio



Covered Patio

Covered Patio



Fireplace

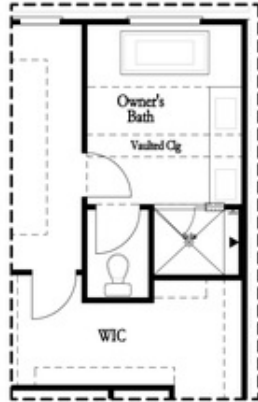


Linear Fireplace

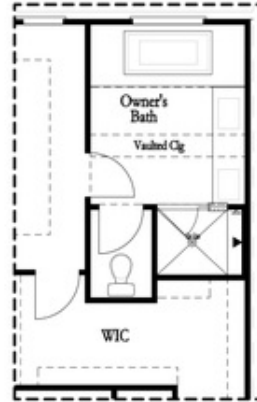
Want to Know More  
 About This Home?

CONTACT OUR COMMUNITY SALES MANAGER  
 Call Us @ 470.248.2097

Second Floor Options

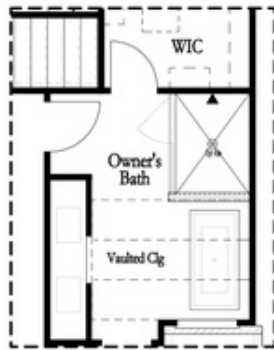


Shower with Freestanding Tub Combo

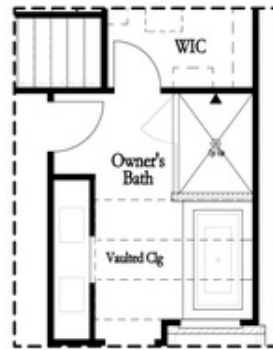


Shower with Decked Tub Combo

Owner's Rear Options



Shower with Freestanding Tub Combo



Shower with Decked Tub Combo

Owner's Front Options

Want to Know More  
 About This Home?

CONTACT OUR COMMUNITY SALES MANAGER  
 Call Us @ 470.248.2097