



PRICED AT  
**\$414,770**

 1752 Sq Ft

 3 Beds

 2.5 Baths

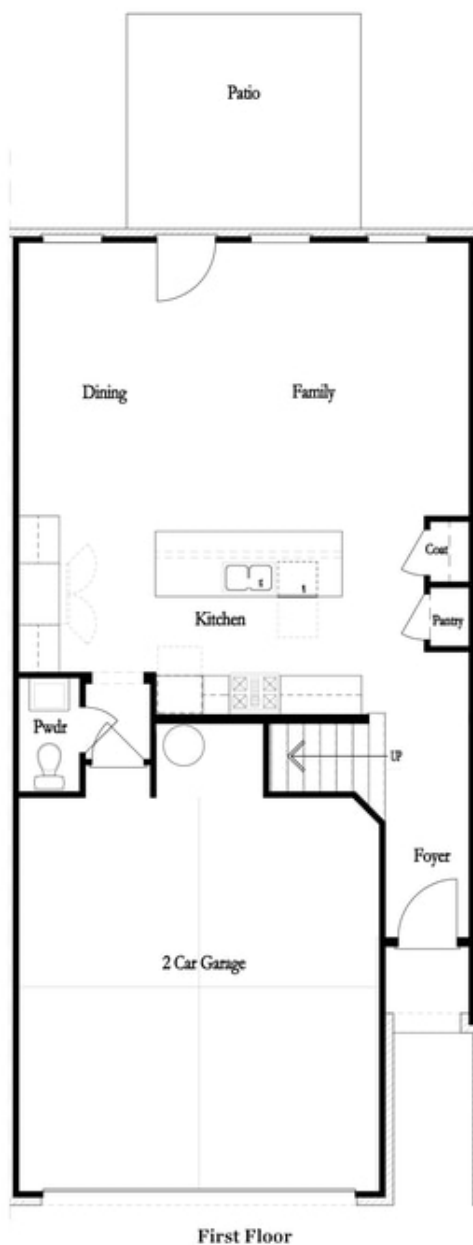
 2 Car Garage

 2.0 Story

Elevate your life in 2023! \*\*Limited time to Choose Your Interior Design Package\*\* The Brittany by The Providence Group - is our brand new 2 story townhome floor plan. Foyer entry on the main level leads to a spacious open 1st floor featuring a designer kitchen, family room and dining area. The gourmet kitchen has quartz countertops, a tile backsplash and stainless appliances. The Kitchen island has plenty of space for dinner prep and also large enough for 3-4 barstools for a more casual eat in area. Exit the sliding door to find a quaint, fenced backyard. On the 2nd floor, you will enter a spacious owner's suite with a huge walk-in closet and the owners bath that offers a tiled Shower, dual vanities with quartz countertops. The laundry room is located in the hallway on the upper level along with 2 secondary bedrooms and shared bath. This community is in a highly desirable location in unincorporated Gwinnett County and close to 3 vibrant cities - downtown Sugar Hill, Suwanee Town Center and Buford!! Incredible amenities will be Gated, Pool, fitness center, Parks and Green Space Easy Access to interstates, shopping and restaurants. Inquire about closing cost contribution incentive with ...

**Want to Know More  
About This Home?**

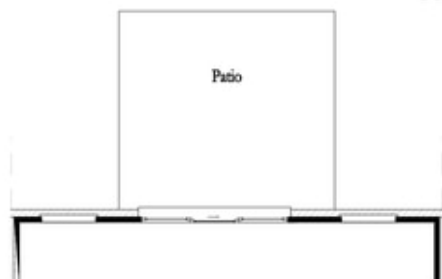
CONTACT OUR COMMUNITY SALES MANAGER  
Call Us @ 470-248-2097



**Want to Know More  
About This Home?**

CONTACT OUR COMMUNITY SALES MANAGER  
Call Us @ 470-248-2097

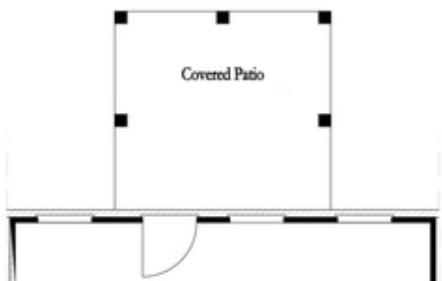
### First Floor Options



8' Slider Door



Screened Patio



Covered Patio



Fireplace

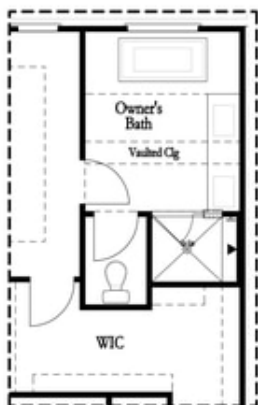


Linear Fireplace

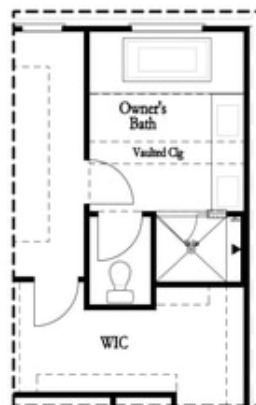
**Want to Know More  
About This Home?**

CONTACT OUR COMMUNITY SALES MANAGER  
Call Us @ 470-248-2097

### Second Floor Options

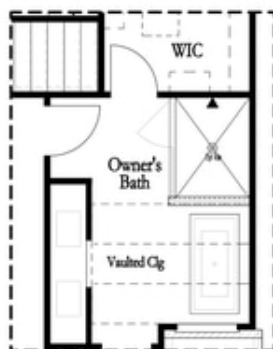


Shower with Freestanding Tub Combo

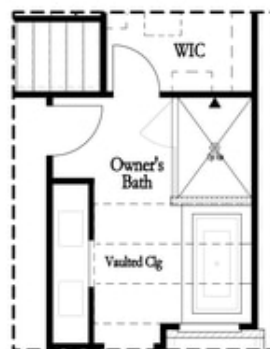


Shower with Decked Tub Combo

### Owner's Rear Options



Shower with Freestanding Tub Combo



Shower with Decked Tub Combo

### Owner's Front Options

Want to Know More  
About This Home?

CONTACT OUR COMMUNITY SALES MANAGER  
Call Us @ 470-248-2097