



PRICED AT  
**\$426,650**

 1752 Sq Ft

 3 Beds

 2.5 Baths

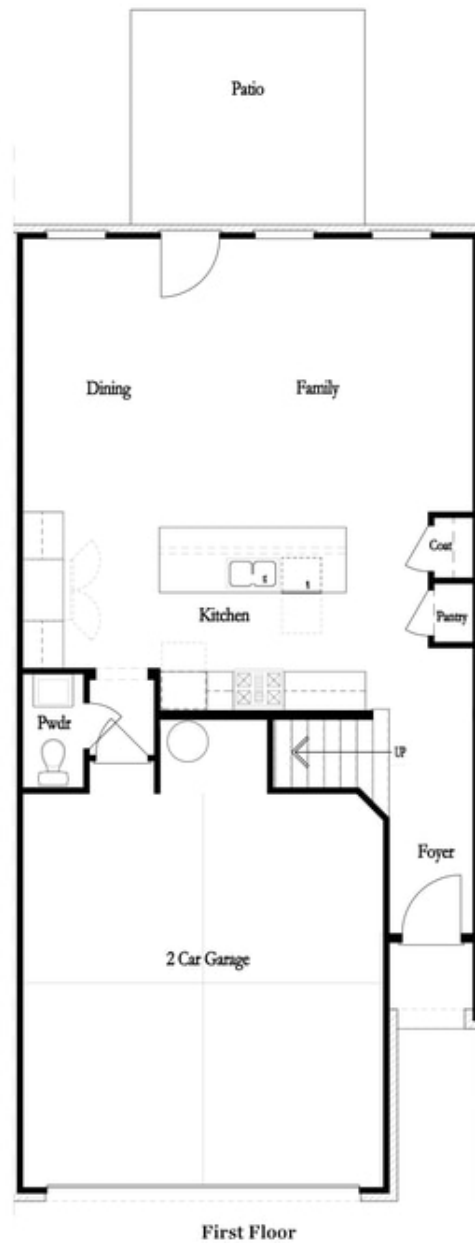
 2 Car Garage

 2.0 Story

Elevate your life in 2023 with a new home by The Providence Group and \$5,000 towards closing cost when financing with one of Seller's 4 preferred lenders. The Brittany by The Providence Group - is our brand new 2 story townhome floor plan. Foyer entry on the main level leads to a spacious open 1st floor featuring a designer kitchen, family room and dining area. The gourmet kitchen has white cabinets, quartz countertops, a tile backsplash and stainless appliances. A massive island has plenty of space for dinner prep and also large enough for 3-4 barstools for a more casual eat in area. Beyond the kitchen, you will find a family room with a cozy fireplace. Exit the back door to find a quaint, fenced backyard. On the 2nd floor, you will enter a spacious owner's suite with a huge walk-in closet and the owners bath that offers a tiled Shower, dual vanities with quartz countertops. The laundry room is located in the hallway on the upper level along with 2 secondary bedrooms and shared bath. This community is in a highly desirable location in unincorporated Gwinnett County and close to 3 vibrant cities - downtown Sugar Hill, Suwanee Town ...

**Want to Know More  
About This Home?**

CONTACT OUR COMMUNITY SALES MANAGER  
Call Us @ 470.248.2097



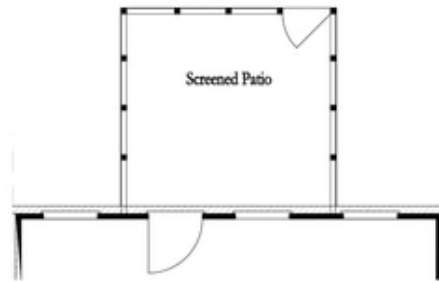
**Want to Know More  
About This Home?**

CONTACT OUR COMMUNITY SALES MANAGER  
Call Us @ 470.248.2097

First Floor Options



8' Slider Door



Screened Patio



Covered Patio



Fireplace

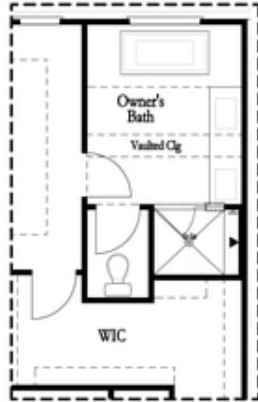


Linear Fireplace

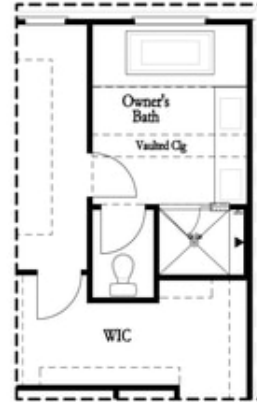
**Want to Know More  
About This Home?**

CONTACT OUR COMMUNITY SALES MANAGER  
Call Us @ 470.248.2097

Second Floor Options

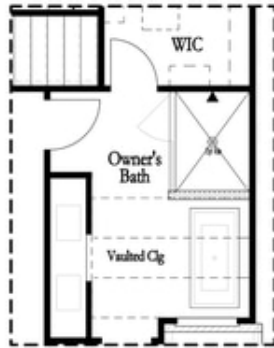


Shower with Freestanding Tub Combo

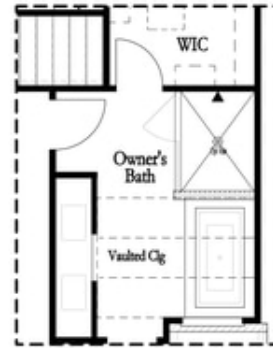


Shower with Decked Tub Combo

Owner's Rear Options



Shower with Freestanding Tub Combo



Shower with Decked Tub Combo

Owner's Front Options

**Want to Know More  
 About This Home?**

CONTACT OUR COMMUNITY SALES MANAGER  
 Call Us @ 470.248.2097