



PRICED AT
\$438,520

 **1752 Sq Ft**

 **3 Beds**

 **2.5 Baths**

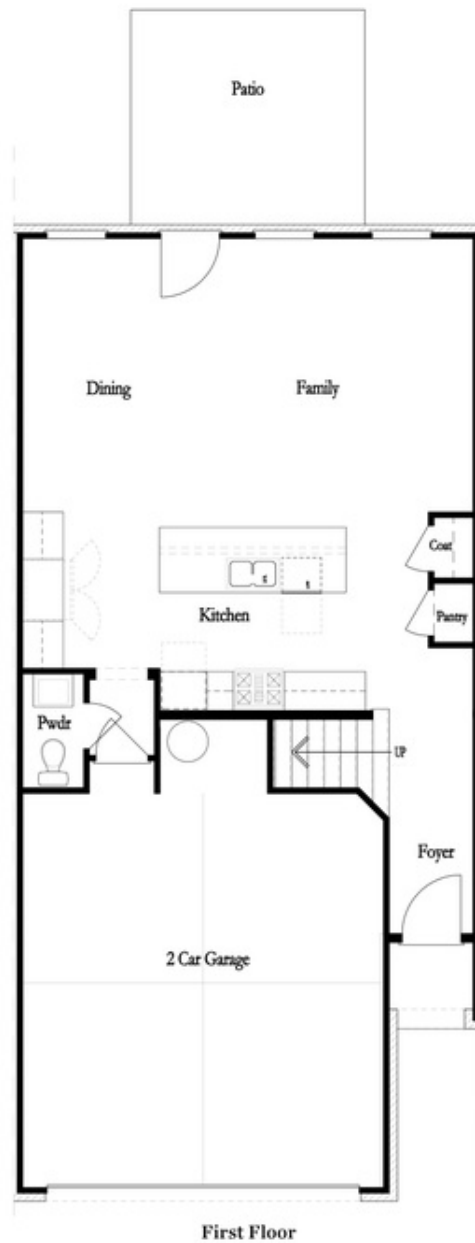
 **2 Car Garage**

 **2.0 Story**

MOVE IN READY HOME!!! Elevate your life in 2023 with a new home by The Providence Group and \$5,000 towards closing cost when financing with one of Seller's 4 preferred lenders. Come see our 2 story townhome floorplan! The Brittany by The Providence Group features an entrance on the main level with garage in front and a cozy, quaint, fenced backyard. A Private foyer on the main level leads you to a Gourmet Kitchen with warm neutral tones, a Large island and gorgeous quartz countertops that overlook the dining & family room. The family room features a fireplace to warm up to on cooler evenings. The gorgeous slider door lets in tons of natural light and leads you to a private, covered patio. When you head to the 2nd floor you will enter a spacious owner's suite with a huge walk-in closet and an owners bath that offers a tiled Shower and dual vanities with quartz countertops. The laundry room is located in the hallway on the upper level along with 2 secondary bedrooms and shared bath. This community is in a highly desirable location in unincorporated Gwinnett County and close to 3 vibrant cities - downtown Sugar Hill, Suwanee ...

**Want to Know More
About This Home?**

CONTACT OUR COMMUNITY SALES MANAGER
Call Us @ 470.248.2097



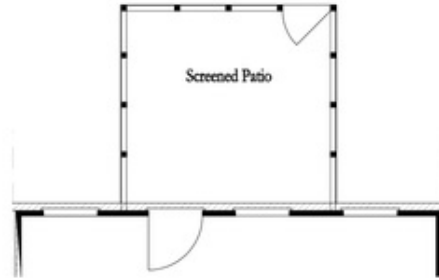
Want to Know More
About This Home?

CONTACT OUR COMMUNITY SALES MANAGER
Call Us @ 470.248.2097

First Floor Options



8' Slider Door



Screened Patio



Covered Patio



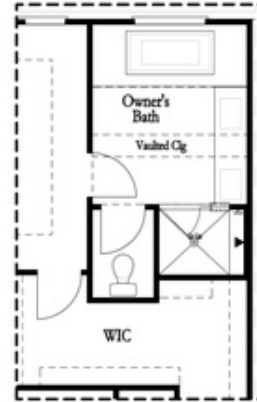
Want to Know More
 About This Home?

CONTACT OUR COMMUNITY SALES MANAGER
 Call Us @ 470.248.2097

Second Floor Options

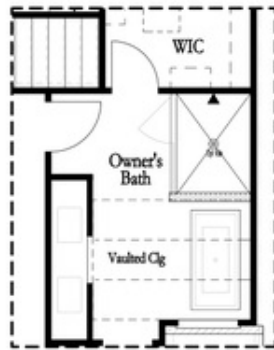


Shower with Freestanding Tub Combo

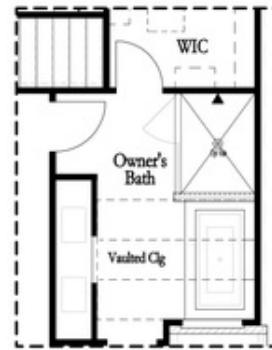


Shower with Decked Tub Combo

Owner's Rear Options



Shower with Freestanding Tub Combo



Shower with Decked Tub Combo

Owner's Front Options

Want to Know More
 About This Home?

CONTACT OUR COMMUNITY SALES MANAGER
 Call Us @ 470.248.2097