



PRICED AT
\$438,520

 1752 Sq Ft

 3 Beds

 2.5 Baths

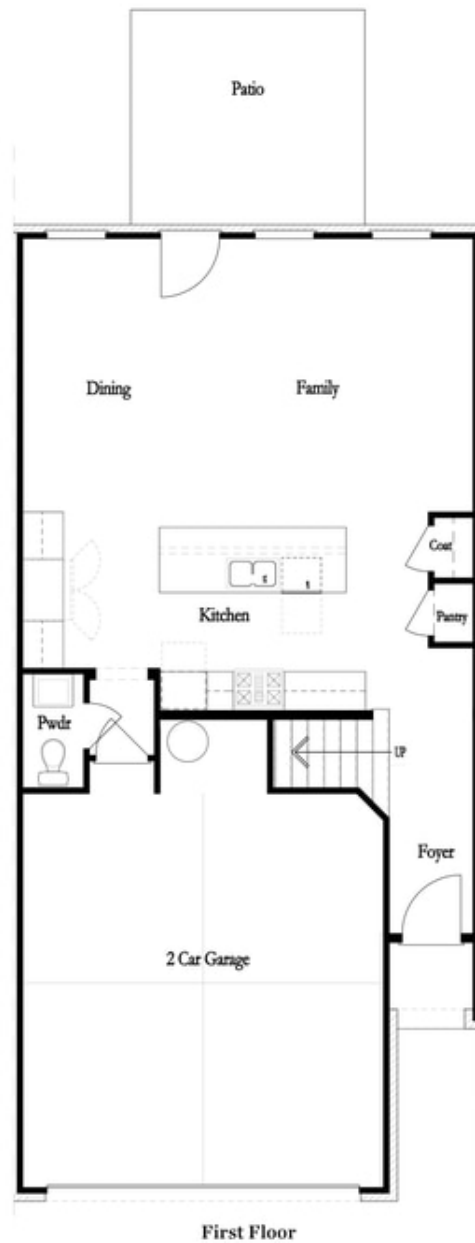
 2 Car Garage

 2.0 Story

MOVE IN READY HOME!!! Elevate your life in 2023 with a new home by The Providence Group and \$5,000 towards closing cost when financing with one of Seller's 4 preferred lenders. Come see our 2 story townhome floorplan! The Brittany by The Providence Group features an entrance on the main level with garage in front and a cozy, quaint, fenced backyard. A Private foyer on the main level leads you to a Gourmet Kitchen with warm neutral tones, a Large island and gorgeous quartz countertops that overlook the dining & family room. The family room features a fireplace to warm up to on cooler evenings. The gorgeous slider door lets in tons of natural light and leads you to a private, covered patio. When you head to the 2nd floor you will enter a spacious owner's suite with a huge walk-in closet and an owners bath that offers a tiled Shower and dual vanities with quartz countertops. The laundry room is located in the hallway on the upper level along with 2 secondary bedrooms and shared bath. This community is in a highly desirable location in unincorporated Gwinnett County and close to 3 vibrant cities - downtown Sugar Hill, Suwanee ...

**Want to Know More
About This Home?**

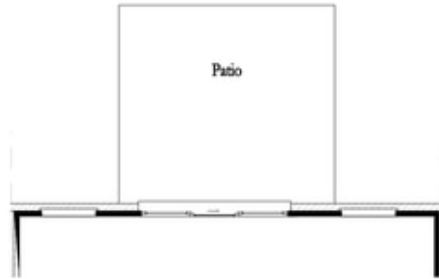
CONTACT OUR COMMUNITY SALES MANAGER
Call Us @ 470.248.2097



**Want to Know More
About This Home?**

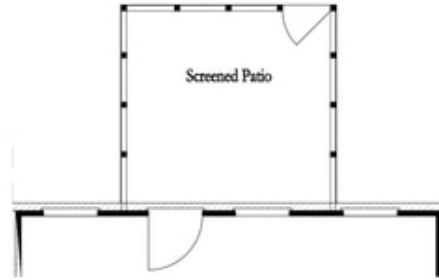
CONTACT OUR COMMUNITY SALES MANAGER
Call Us @ 470.248.2097

First Floor Options



Patio

8' Slider Door



Screened Patio

Screened Patio



Covered Patio

Covered Patio



Fireplace

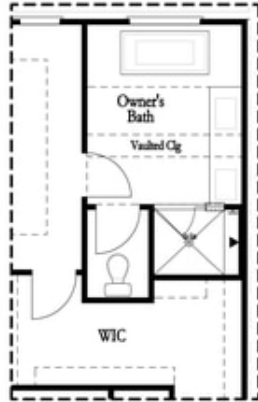


Linear Fireplace

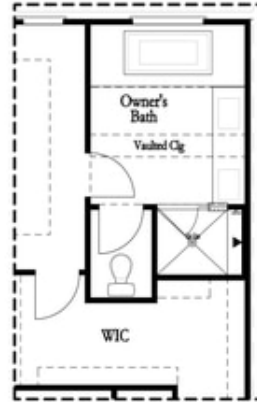
**Want to Know More
 About This Home?**

CONTACT OUR COMMUNITY SALES MANAGER
 Call Us @ 470.248.2097

Second Floor Options

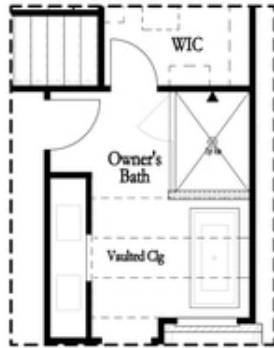


Shower with Freestanding Tub Combo

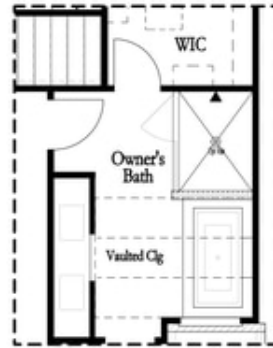


Shower with Decked Tub Combo

Owner's Rear Options



Shower with Freestanding Tub Combo



Shower with Decked Tub Combo

Owner's Front Options

**Want to Know More
 About This Home?**

CONTACT OUR COMMUNITY SALES MANAGER
 Call Us @ 470.248.2097