

PRICED AT
\$433,150

 1752 Sq Ft

 3 Beds

 2.5 Baths

 2 Car Garage

 2.0 Story

Quick Move In **The Brittany by The Providence Group - is our brand new 2 story townhome floor plan. Foyer entry on the main level leads to a spacious open 1st floor featuring a designer kitchen, family room and dining area. The gourmet kitchen has white cabinets, quartz countertops, a tile backsplash and stainless appliances. A massive island has plenty of space for dinner prep and also large enough for 3-4 barstools for a more casual eat in area. Beyond the kitchen, you will find a family room with a cozy fireplace. Exit the back door to find a covered patio and quaint, fenced backyard. On the 2nd floor, you will enter a spacious owner's suite with a huge walk-in closet and the owners bath that offers a tiled Shower, dual vanities with quartz countertops. The laundry room is located in the hallway on the upper level along with 2 secondary bedrooms and shared bath. This community is in a highly desirable location in unincorporated Gwinnett County and close to 3 vibrant cities - downtown Sugar Hill, Suwanee Town Center and Buford!! Incredible amenities will be Gated, Pool, fitness center, Parks and Green Space Easy Access to interstates, shopping and ...

**Want to Know More
About This Home?**

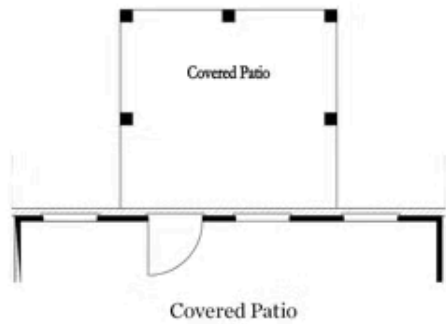
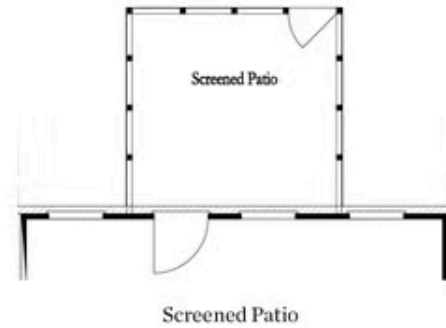
CONTACT OUR COMMUNITY SALES MANAGER
Call Us @ 470.248.2097



Want to Know More
About This Home?

CONTACT OUR COMMUNITY SALES MANAGER
Call Us @ 470.248.2097

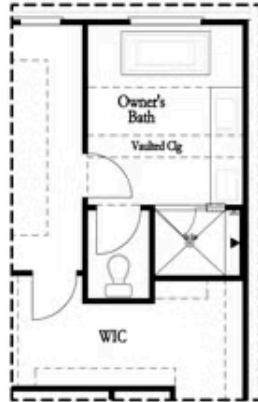
First Floor Options



Want to Know More
About This Home?

CONTACT OUR COMMUNITY SALES MANAGER
Call Us @ 470.248.2097

Second Floor Options

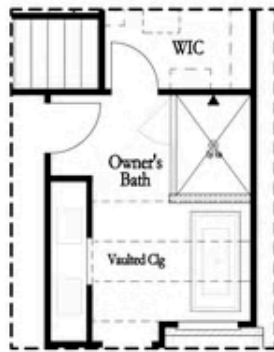


Shower with Freestanding Tub Combo

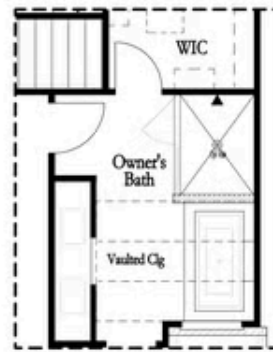


Shower with Decked Tub Combo

Owner's Rear Options



Shower with Freestanding Tub Combo



Shower with Decked Tub Combo

Owner's Front Options

Want to Know More
About This Home?

CONTACT OUR COMMUNITY SALES MANAGER
Call Us @ 470.248.2097