



PRICED AT
\$433,150

 1752 Sq Ft

 3 Beds

 2.5 Baths

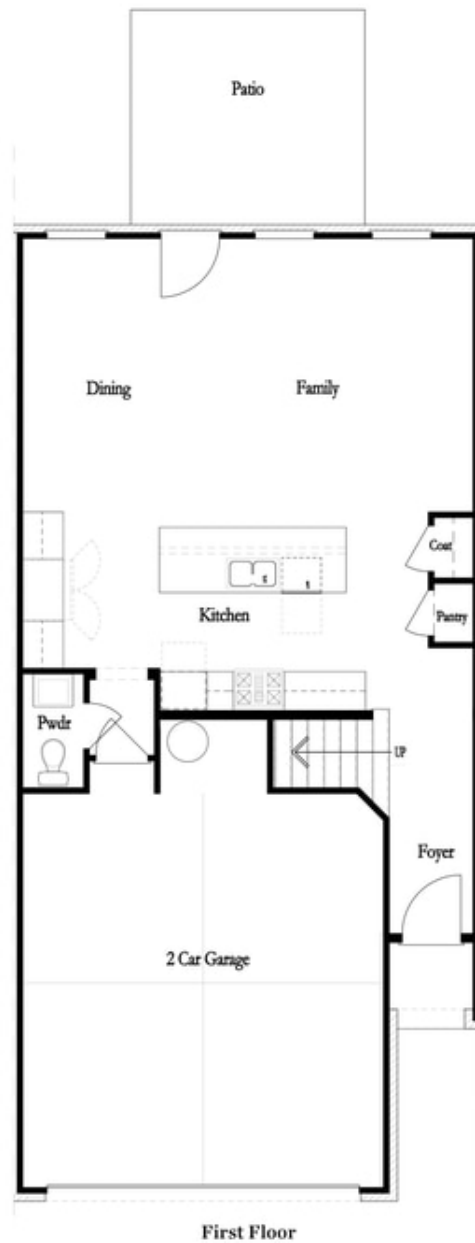
 2 Car Garage

 2.0 Story

Quick Move In **The Brittany by The Providence Group - is our brand new 2 story townhome floor plan. Foyer entry on the main level leads to a spacious open 1st floor featuring a designer kitchen, family room and dining area. The gourmet kitchen has white cabinets, quartz countertops, a tile backsplash and stainless appliances. A massive island has plenty of space for dinner prep and also large enough for 3-4 barstools for a more casual eat in area. Beyond the kitchen, you will find a family room with a cozy fireplace. Exit the back door to find a covered patio and quaint, fenced backyard. On the 2nd floor, you will enter a spacious owner's suite with a huge walk-in closet and the owners bath that offers a tiled Shower, dual vanities with quartz countertops. The laundry room is located in the hallway on the upper level along with 2 secondary bedrooms and shared bath. This community is in a highly desirable location in unincorporated Gwinnett County and close to 3 vibrant cities - downtown Sugar Hill, Suwanee Town Center and Buford!! Incredible amenities will be Gated, Pool, fitness center, Parks and Green Space Easy Access to interstates, shopping and ...

**Want to Know More
About This Home?**

CONTACT OUR COMMUNITY SALES MANAGER
Call Us @ 470.248.2097



**Want to Know More
About This Home?**

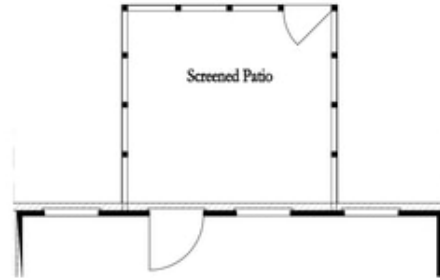
CONTACT OUR COMMUNITY SALES MANAGER
Call Us @ 470.248.2097

First Floor Options



Patio

8' Slider Door



Screened Patio

Screened Patio



Covered Patio

Covered Patio



Fireplace



Linear Fireplace

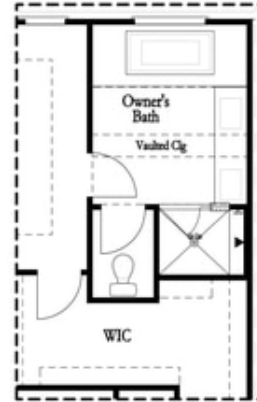
**Want to Know More
 About This Home?**

CONTACT OUR COMMUNITY SALES MANAGER
 Call Us @ 470.248.2097

Second Floor Options

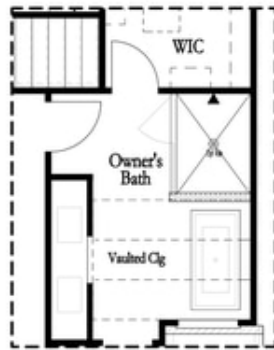


Shower with Freestanding Tub Combo

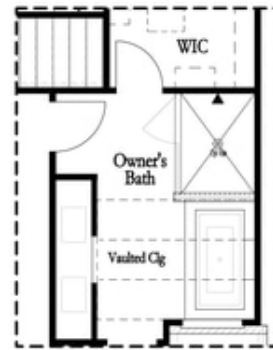


Shower with Decked Tub Combo

Owner's Rear Options



Shower with Freestanding Tub Combo



Shower with Decked Tub Combo

Owner's Front Options

**Want to Know More
 About This Home?**

CONTACT OUR COMMUNITY SALES MANAGER
 Call Us @ 470.248.2097