



PRICED AT  
**\$459,920**

 **1752 Sq Ft**

 **3 Beds**

 **2.5 Baths**

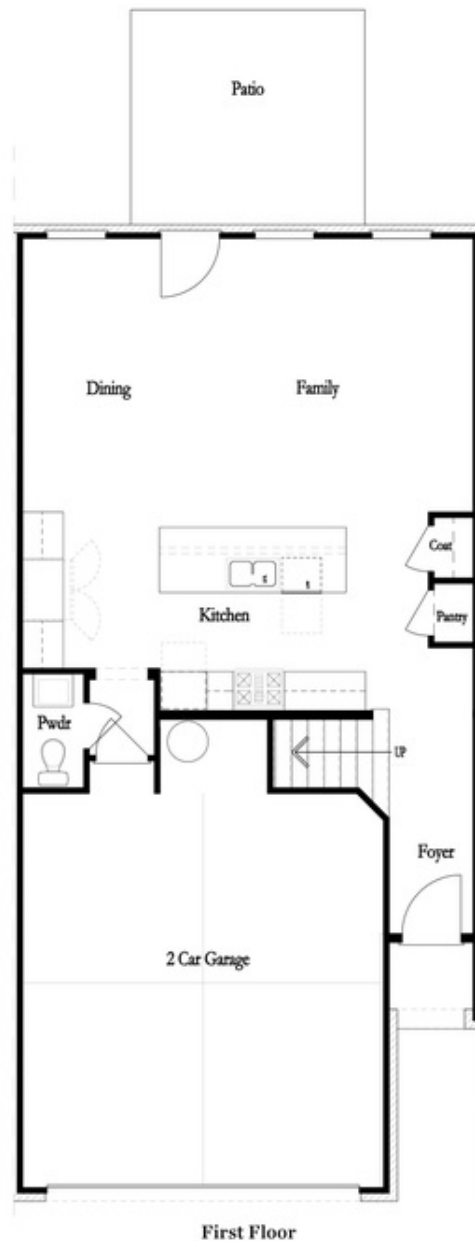
 **2 Car Garage**

 **2.0 Story**

**END UNIT - Come check out our 2 story Brittany floor plan featuring a main level entrance with front garage. A Private foyer entry leads you to a beautiful Kitchen that offers our Warm Linen Design package with white linen cabinets, beautiful tile backsplash, Calacatta Prado quartz countertops, stainless appliances and a large island that is open to the family room and dining area. Cozy up to the fireplace in the family room on those chilly evenings. Between the family room and dining area, you find a slider door that opens to your covered patio and backyard! Hard Surface floors flow throughout the main level. Make your way to the 2nd floor to find a spacious owner's suite and bath with Walk-in Shower and separate soaking tub, dual vanities with quartz countertops & a huge walk in closet. 2 additional bedrooms share a bath and the laundry room is upstairs also for easy convenience. This community is in a highly desirable location in unincorporated Gwinnett County and close to 3 vibrant cities - downtown Sugar Hill, Suwanee Town Center and Buford!! Incredible amenities will be Gated, Pool,, fitness center, Parks and Green Space . Easy Access to interstates, shopping and ...**

**Want to Know More  
About This Home?**

**CONTACT OUR COMMUNITY SALES MANAGER**  
**Call Us @ 470.248.2097**



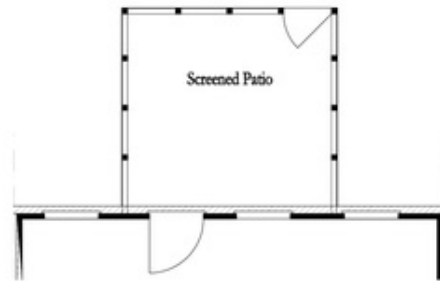
Want to Know More  
About This Home?

CONTACT OUR COMMUNITY SALES MANAGER  
Call Us @ 470.248.2097

First Floor Options



8' Slider Door



Screened Patio



Covered Patio



Fireplace



Linear Fireplace

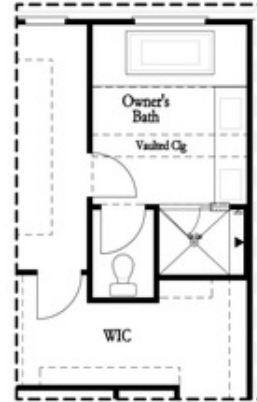
Want to Know More  
 About This Home?

CONTACT OUR COMMUNITY SALES MANAGER  
 Call Us @ 470.248.2097

Second Floor Options

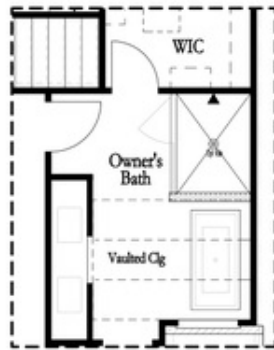


Shower with Freestanding Tub Combo

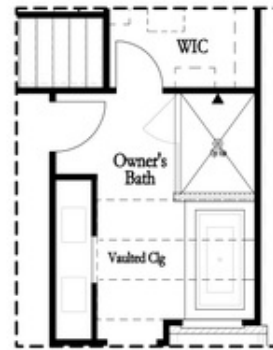


Shower with Decked Tub Combo

Owner's Rear Options



Shower with Freestanding Tub Combo



Shower with Decked Tub Combo

Owner's Front Options

Want to Know More  
 About This Home?

CONTACT OUR COMMUNITY SALES MANAGER  
 Call Us @ 470.248.2097