



PRICED AT
\$429,050



1752 Sq Ft



3 Beds



2.5 Baths



2 Car Garage



2.0 Story

Elevate your life in 2023! \$20k Any Way You Want on all contracts written before 1/31/2023 and closing by 3/31/2023 Brand New 2 story Brittany floor plan featuring the entrance on the main level with garage in front and a cozy backyard. You will enjoy sitting and sipping coffee on your covered patio! A Private foyer on the main level leads you to a Gourmet Kitchen with White Cabinets, tile backsplash, Large island and gorgeous slate colored quartz countertops that overlook the dining & family room. When it's cool out, sit by your new fireplace. When you head to the 2nd floor you will enter a spacious owner's suite that offers a soaking tub and separate shower, dual vanities with quartz countertops & a huge walk in closet. Carpets are only on the 2nd floor in the bedrooms and hallway that will feel nice on your feet during the winter months. The laundry room is located in the hallway on the upper level along with 2 secondary bedrooms and shared bath. This community is in a highly desirable location in unincorporated Gwinnett County and close to 3 vibrant cities - downtown Sugar Hill, Suwanee Town Center and Buford!! Incredible amenities ...

**Want to Know More
About This Home?**

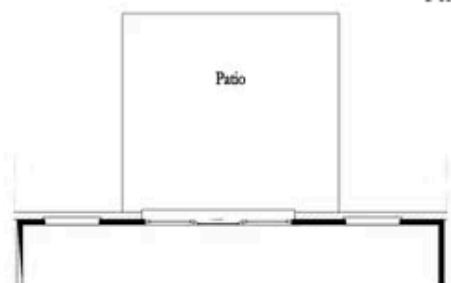
CONTACT OUR COMMUNITY SALES MANAGER
Call Us @ 470.248.2097



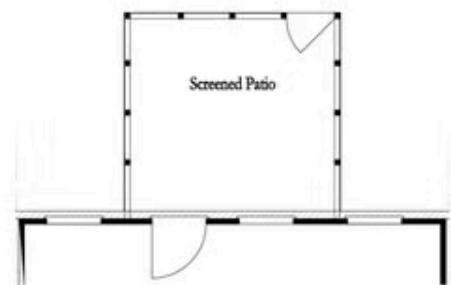
Want to Know More
About This Home?

CONTACT OUR COMMUNITY SALES MANAGER
Call Us @ 470.248.2097

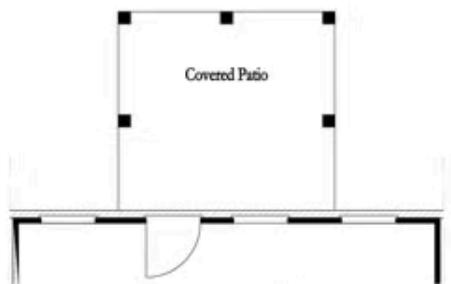
First Floor Options



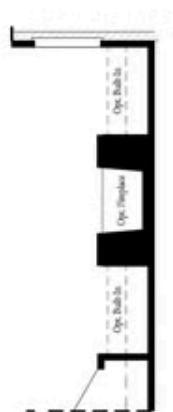
8' Slider Door



Screened Patio



Covered Patio



Fireplace

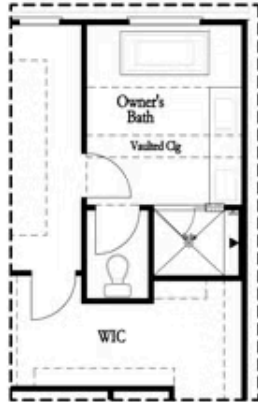


Linear Fireplace

Want to Know More
About This Home?

CONTACT OUR COMMUNITY SALES MANAGER
Call Us @ 470.248.2097

Second Floor Options



Shower with Freestanding Tub Combo

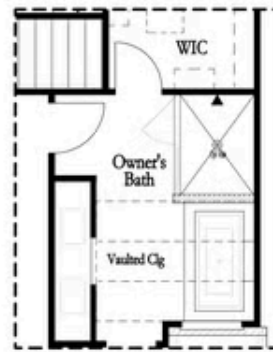


Shower with Decked Tub Combo

Owner's Rear Options



Shower with Freestanding Tub Combo



Shower with Decked Tub Combo

Owner's Front Options

Want to Know More
About This Home?

CONTACT OUR COMMUNITY SALES MANAGER
Call Us @ 470.248.2097