






PRICED AT  
**\$419,270**

-  1752 Sq Ft
-  3 Beds
-  2.5 Baths
-  2 Car Garage
-  2.0 Story

Elevate your life in 2023! \$20k Any Way You Want on all contracts written before 1/31/2023 and closing by 3/31/2023 Brittany Floor Plan - By The Providence Group - Brand New 2 story floor plan featuring the entrance on the main level with garage in front and a cozy backyard. You will enjoy looking outside thru the nice slider door that leads out to the covered patio! A Private foyer on the main level leads you to a Gourmet Kitchen, Large island and quartz countertops that overlook the dining & family room. When you head to the 2nd floor you will enter a spacious owner's suite that offers a Walk-in Shower, dual vanities with quartz countertops & a huge walk in closet. Carpets are only on the 2nd floor in the bedrooms and hallway that will feel nice on your feet in winter. The laundry room is located in the hallway on the upper level along with 2 secondary bedrooms and shared bath. This community is in a highly desirable location in unincorporated Gwinnett County and close to 3 vibrant cities - downtown Sugar Hill, Suwanee Town Center and Buford!! Incredible amenities will be Gated, Pool, Clubhouse, fitness center, Parks ...

**Want to Know More  
About This Home?**

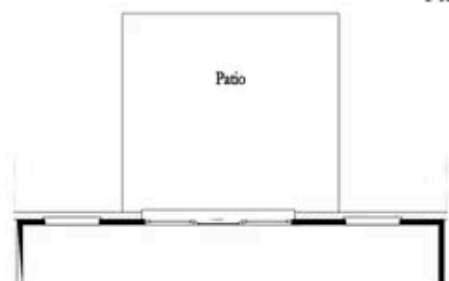
CONTACT OUR COMMUNITY SALES MANAGER  
Call Us @ 470.248.2097



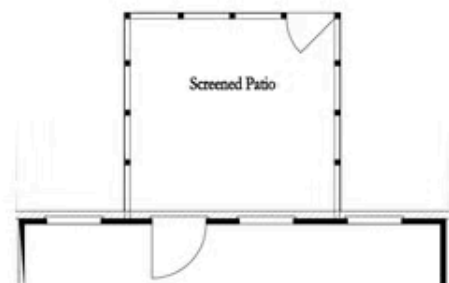
Want to Know More  
About This Home?

CONTACT OUR COMMUNITY SALES MANAGER  
Call Us @ 470.248.2097

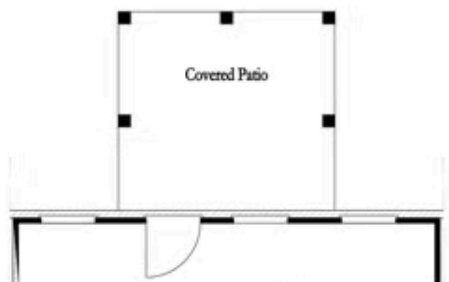
### First Floor Options



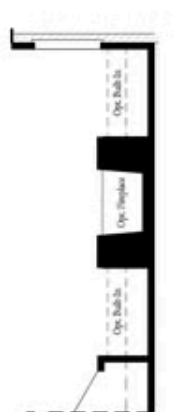
8' Slider Door



Screened Patio



Covered Patio



Fireplace

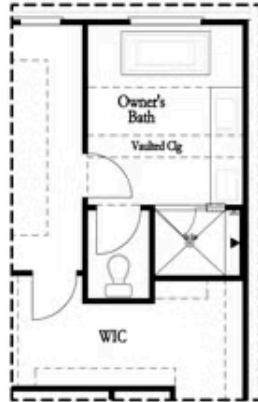


Linear Fireplace

Want to Know More  
About This Home?

CONTACT OUR COMMUNITY SALES MANAGER  
Call Us @ 470.248.2097

### Second Floor Options

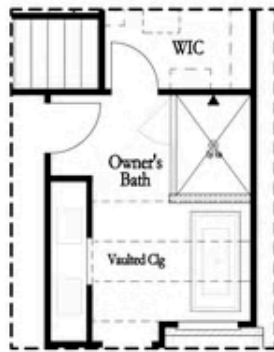


Shower with Freestanding Tub Combo

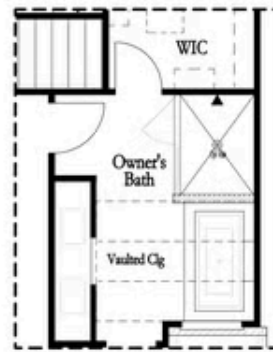


Shower with Decked Tub Combo

### Owner's Rear Options



Shower with Freestanding Tub Combo



Shower with Decked Tub Combo

### Owner's Front Options

Want to Know More  
About This Home?

CONTACT OUR COMMUNITY SALES MANAGER  
Call Us @ 470.248.2097