



PRICED AT
\$457,420

 1752 Sq Ft

 3 Beds

 2.5 Baths

 2 Car Garage

 2.0 Story

MOVE IN READY END UNIT !!! Gated Community ** Spring Into Savings with \$10K towards closing costs. Offer only available on contracts written by April 30, 2023 when financing with one of Seller's 4 preferred lenders. Welcome to the Brittany floor plan featuring a main level entrance with front garage and a Private Fenced backyard and patio that is covered! Enter through a Private foyer that leads you to a Designer Kitchen that has white cabinets, beautiful white tile backsplash, quartz countertops, stainless appliances and an oversized island with a single bowl sink. Hard Surface floors on the main level, Oak treads and Hard surface on 2nd floor hallway. This home features Fireplace and sliding door that leads to your private backyard and covered patio for relaxation.. Make your way to the 2nd floor to find a spacious owner's suite and bath with Walk-in Shower and separate tub, dual vanities with quartz countertops & undermount sinks. You will love the huge walk in closet. 2 additional bedrooms are also on the upper floor and share a bath. The laundry room is also on the upper floor for your convenience. This community is in a highly desirable location in unincorporated Gwinnett County ...

**Want to Know More
About This Home?**

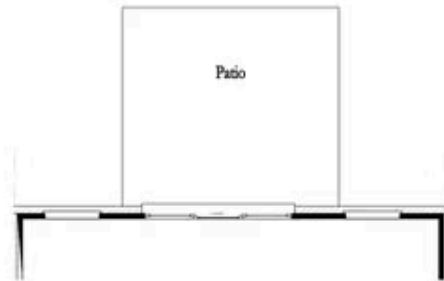
CONTACT OUR COMMUNITY SALES MANAGER
Call Us @ 470.248.2097



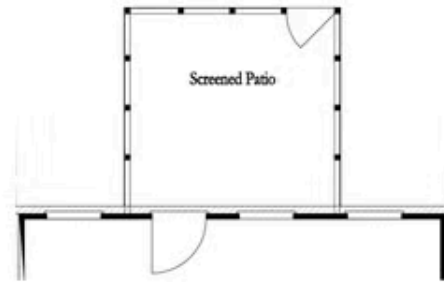
Want to Know More
About This Home?

CONTACT OUR COMMUNITY SALES MANAGER
Call Us @ 470.248.2097

First Floor Options



8' Slider Door



Screened Patio



Covered Patio



Fireplace

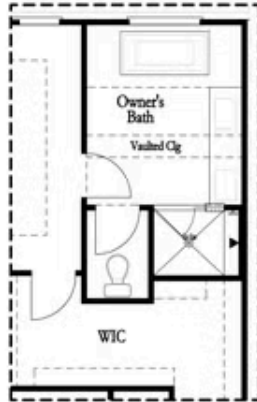


Linear Fireplace

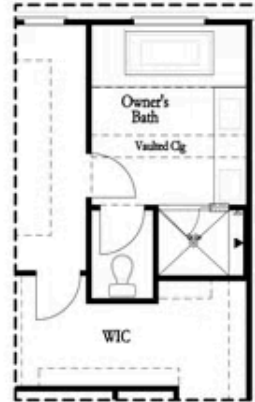
Want to Know More
About This Home?

CONTACT OUR COMMUNITY SALES MANAGER
Call Us @ 470.248.2097

Second Floor Options



Shower with Freestanding Tub Combo

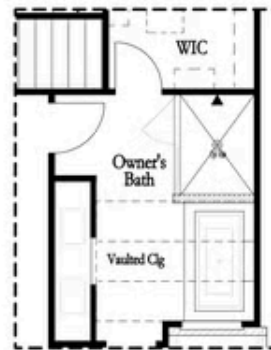


Shower with Decked Tub Combo

Owner's Rear Options



Shower with Freestanding Tub Combo



Shower with Decked Tub Combo

Owner's Front Options

Want to Know More
About This Home?

CONTACT OUR COMMUNITY SALES MANAGER
Call Us @ 470.248.2097