



PRICED AT
\$501,700

 2004 Sq Ft

 3 Beds

 3.5 Baths

 2 Car Garage

 3.0 Story

Discover The Glendale by The Providence Group. ** MOVE IN READY END UNIT!!! *** Brand New - New Construction 2026! Stylish 3-Story Townhome in Desirable Millcroft Community Welcome to this beautifully designed Glendale floor plan townhome offering 3 spacious bedrooms, each with its own private bathroom—no sharing required! Located in the sought-after Millcroft community in unincorporated Gwinnett County, this home blends comfort, convenience, and modern style. Terrace Level: Private front entrance with welcoming foyer and durable hard surface flooring Versatile bedroom with plush carpet and upgraded en-suite bathroom featuring a premium shower Ideal for use as a guest suite, home office, gym, media room, or creative space Attached 2-car garage with remote access Main Level: Elegant oak tread staircase leads to an open-concept living area Gourmet kitchen with white cabinetry, quartz countertops, single-bowl sink, and hard surface flooring Seamless flow between kitchen, dining area, family room, and expansive deck—perfect for entertaining Upper Level: Owner's suite with walk-in closet and luxurious bathroom featuring frameless walk-in shower, dual sinks, and tile flooring Secondary bedroom with private bath and tub/shower combo Convenient laundry room located nearby Community Amenities: Resort-style pool with covered cabana, grills, fireplace, and outdoor dining area Pocket park with fire ...

**Want to Know More
About This Home?**

CONTACT OUR COMMUNITY SALES MANAGER
Call Us @ 470.248.2097



Elevations B & C Floor Plan Layout

Want to Know More
About This Home?

CONTACT OUR COMMUNITY SALES MANAGER
Call Us @ 470.248.2097

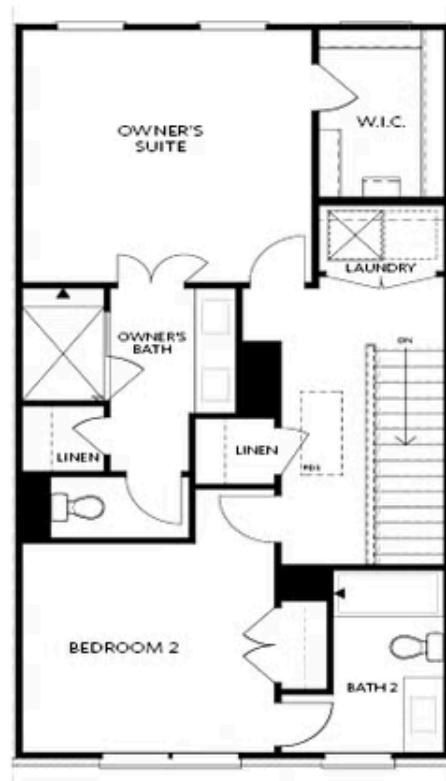


FIRST FLOOR

Elevations B & C Floor Plan Layout

Want to Know More
About This Home?

CONTACT OUR COMMUNITY SALES MANAGER
Call Us @ 470.248.2097

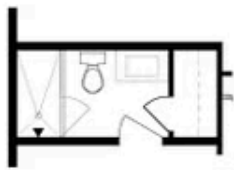


SECOND FLOOR

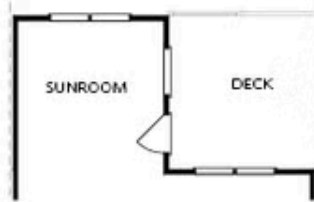
Elevations B & C Floor Plan Layout

**Want to Know More
About This Home?**

CONTACT OUR COMMUNITY SALES MANAGER
Call Us @ 470.248.2097



OPT Bath 3 Shower ilo
 Tub/Shower Combo



OPT Sunroom ilo Full Deck



OPT Owner's
 Walk-Through Shower



OPT Stair Landing
 on Terrace



OPT Fireplace



OPT Linear Fireplace



OPT Owner's Shower &
 Tub Combo

OPTIONS

Want to Know More
 About This Home?

CONTACT OUR COMMUNITY SALES MANAGER
 Call Us @ 470.248.2097