



PRICED AT
\$548,400

 2096 Sq Ft

 3 Beds

 3.5 Baths

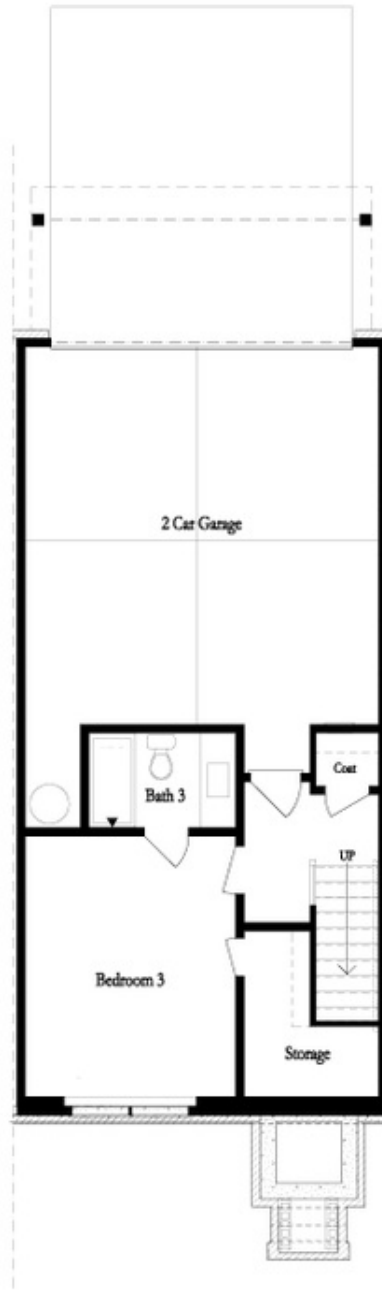
 2 Car Garage

 3.0 Story

FALL INTO SAVINGS with *\$25,000 ANYWAY YOU WANT* on contracts written in October & closing in November! New Plan At Millcroft Community!!! MOVE-IN READY END UNIT **The Freemont plan is a very open plan. Main floor features Breakfast Bar on Kitchen Peninsula Plenty of extra counter space and a great spot for entertaining. Imagine cooking in your own gourmet kitchen complete with stainless steel appliances, quartz countertop and tile backsplash. Open Main Level with Kitchen Overlooking Dining Room and Family Room & Sunroom perfect for an at home office or breakfast room. The Upper level boasts comfortable living in the Spacious Owner's Suite with Large Walk-In Closet, dual vanities, Frameless large shower & tub, as well as Vaulted Ceilings. The laundry room is also upstairs for laundry day convenience. The Secondary Bedrooms Feature Personal Full Bath and there is a Private Bedroom with Guest Suite on Terrace. This home has a 2 car rear entry garage with garage door openers. The design team has selected the beautiful New Warm What Collection Package, the finishes have a modern gorgeous look!! This community is in highly desirable location and close to 3 vibrant cities - downtown Sugar Hill, Suwanee Town Center and ...

Want to Know More
About This Home?

CONTACT OUR COMMUNITY SALES MANAGER
Call Us @ 470.248.2097



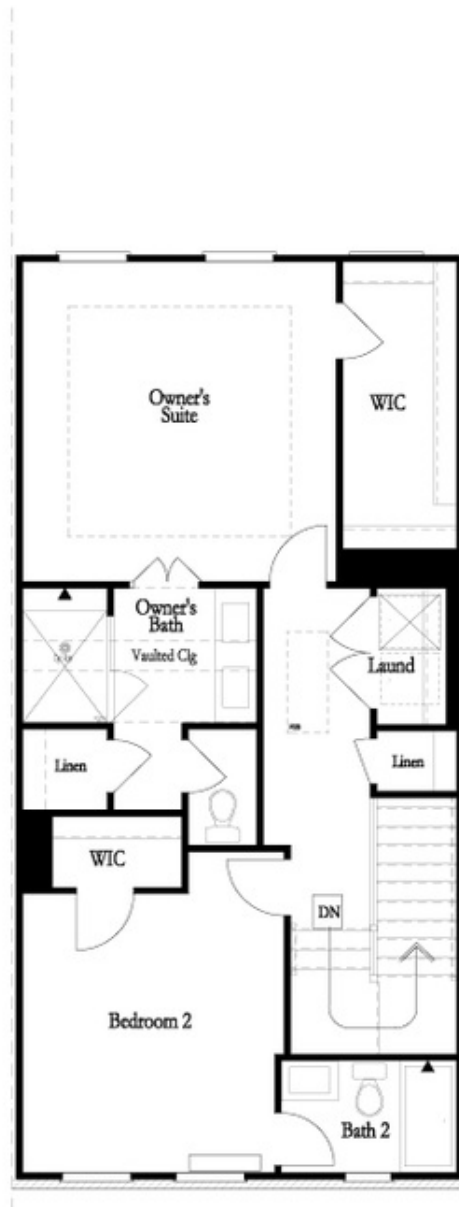
Want to Know More
About This Home?

CONTACT OUR COMMUNITY SALES MANAGER
Call Us @ 470.248.2097



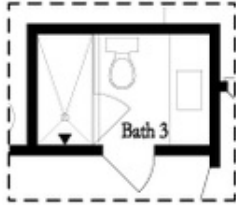
Want to Know More
About This Home?

CONTACT OUR COMMUNITY SALES MANAGER
Call Us @ 470.248.2097



Want to Know More
About This Home?

CONTACT OUR COMMUNITY SALES MANAGER
Call Us @ 470.248.2097



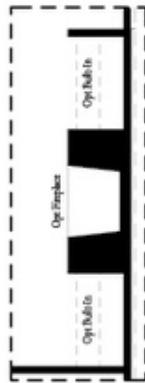
OPT Terrace Shower Only
 into Tub/Shower Combo



OPT Tub & Shower
 in Owner's Bath



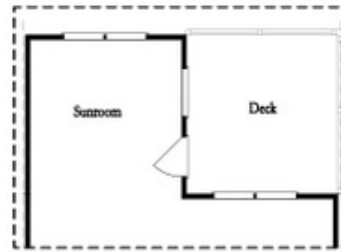
OPT Walk Through Shower
 in Owner's Bath



OPT Fireplace



OPT Linear Fireplace



OPT Sunroom

Want to Know More
 About This Home?

CONTACT OUR COMMUNITY SALES MANAGER
 Call Us @ 470.248.2097