



PRICED AT
\$486,650

 **2004 Sq Ft**

 **3 Beds**

 **3.5 Baths**

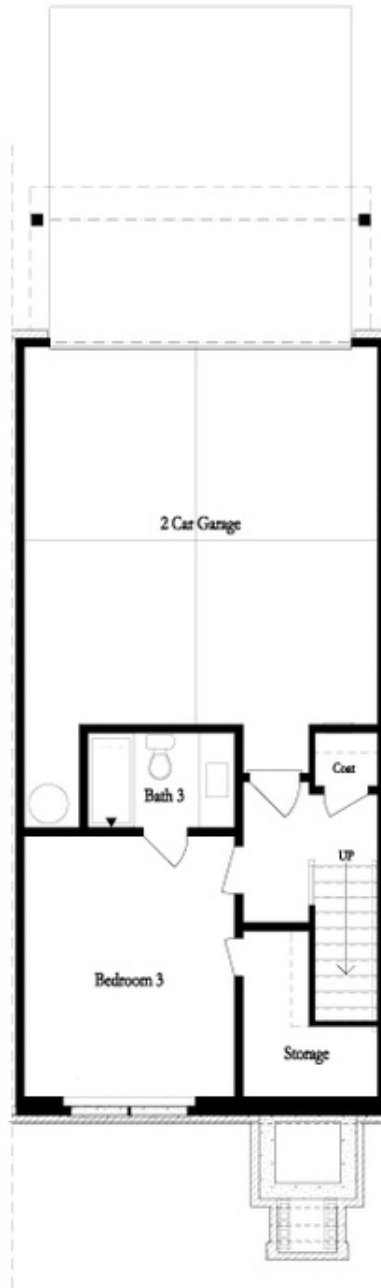
 **2 Car Garage**

 **3.0 Story**

Fall into Savings applied when closed by end of November! Gated Community **The Freemont plan is a very open floor plan. Main floor features Breakfast Bar on Kitchen Peninsula. Plenty of extra counter space and a great spot for entertaining. Imagine cooking in your own gourmet kitchen complete with stainless steel appliances, quartz countertop and tile backsplash. Open Main Level with Kitchen Overlooking Dining Room and Family Room This home will have a cozy Fireplace with box beam mantle for you to enjoy and a large deck for that outdoor entertaining. The Upper level boasts comfortable living in the Spacious Owner's Suite with Large Walk-In Closet, dual vanities, Frameless large shower & Vaulted Ceilings. The laundry room is also upstairs for laundry day convenience. The Secondary Bedroom has its own Private Full Bath and there is a Private Guest Suite on Terrace level with full bathroom. This home has a 2 car rear entry garage with garage door openers. The design team has selected the beautiful Cool Linen Collection Package, the finishes have a modern, clean, gorgeous look!! This community is in highly desirable location in unincorporated Gwinnett County and close to 3 vibrant cities - downtown Sugar Hill, Suwanee ...

**Want to Know More
About This Home?**

**CONTACT OUR COMMUNITY SALES MANAGER
Call Us @ 470.248.2097**



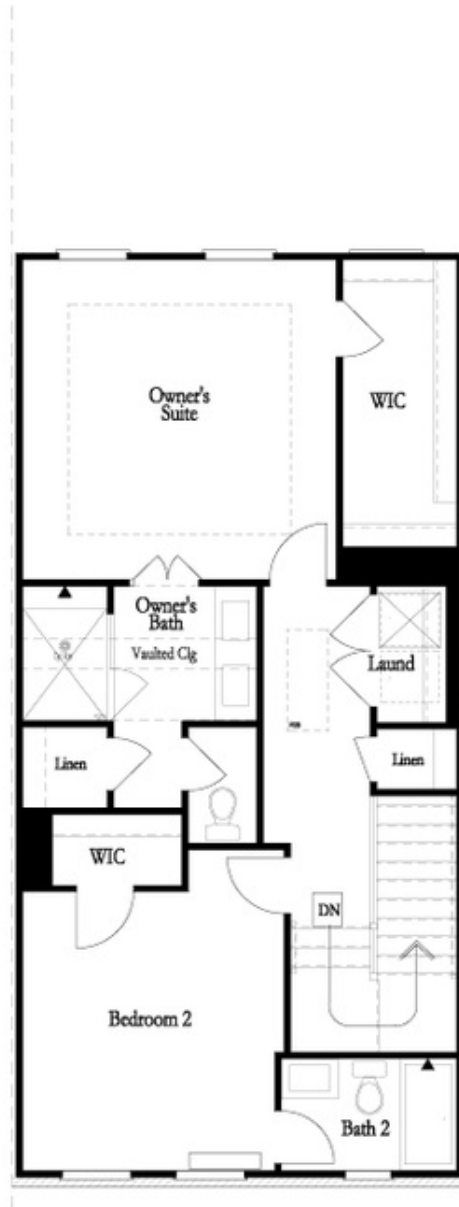
Want to Know More
About This Home?

CONTACT OUR COMMUNITY SALES MANAGER
Call Us @ 470.248.2097



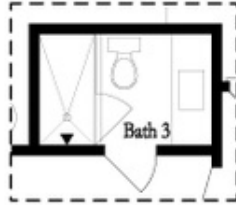
Want to Know More
About This Home?

CONTACT OUR COMMUNITY SALES MANAGER
Call Us @ 470.248.2097



Want to Know More
About This Home?

CONTACT OUR COMMUNITY SALES MANAGER
Call Us @ 470.248.2097



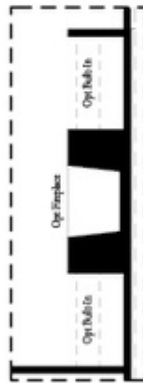
OPT Terrace Shower Only
 into Tub/Shower Combo



OPT Tub & Shower
 in Owner's Bath



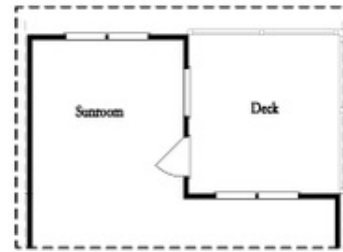
OPT Walk Through Shower
 in Owner's Bath



OPT Fireplace



OPT Linear Fireplace



OPT Sunroom

Want to Know More
 About This Home?

CONTACT OUR COMMUNITY SALES MANAGER
 Call Us @ 470.248.2097