



PRICED AT  
**\$591,390**

 **2010 Sq Ft**

 **3 Beds**

 **2.5 Baths**

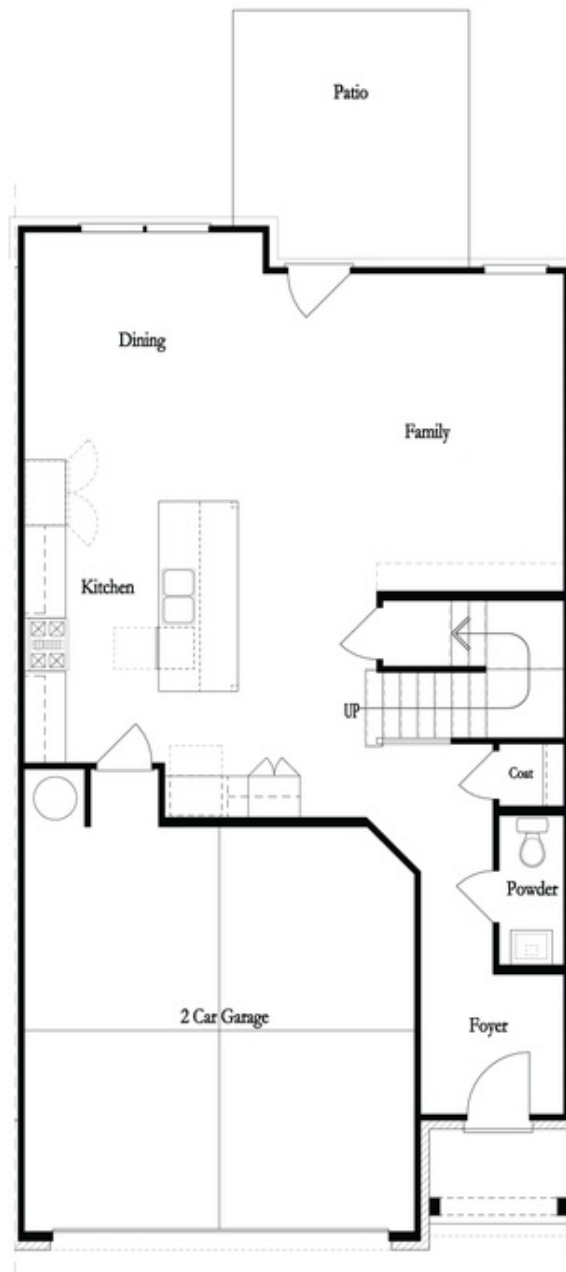
 **2 Car Garage**

 **2.0 Story**

**Spring into a New Home! Use \$25K Anyway on contracts written in March! Fabulous Two story Townhome on UNFINISHED BASEMENT with covered porch and fenced backyard!!!! Blinds included on main floor and 2nd floor. Homesite 158 offers an easy entry on the main level with a front entry garage. This home is Owner's Rear configuration and has our Cool Stone Design Collection. A Private foyer on the main level with hard surface floors leads you to a Gourmet Kitchen with an oversized island and quartz countertops. The dining & family room connect seamlessly and the family room has tons of natural light leading onto your covered porch for entertaining and relaxing. When you head to the 2nd floor you will enter a spacious owner's suite that offers dual vanities with quartz countertops, a huge upgraded Walk in Shower with drying area. The laundry room is located in the hallway on the upper level along with 2 secondary bedrooms and shared bath. The unfinished basement has endless possibilities - media room, fitness space, game room or simply storage.. you decide! This community is in highly desirable location in unincorporated Gwinnett County and close to 3 vibrant cities - downtown Sugar Hill, ...**

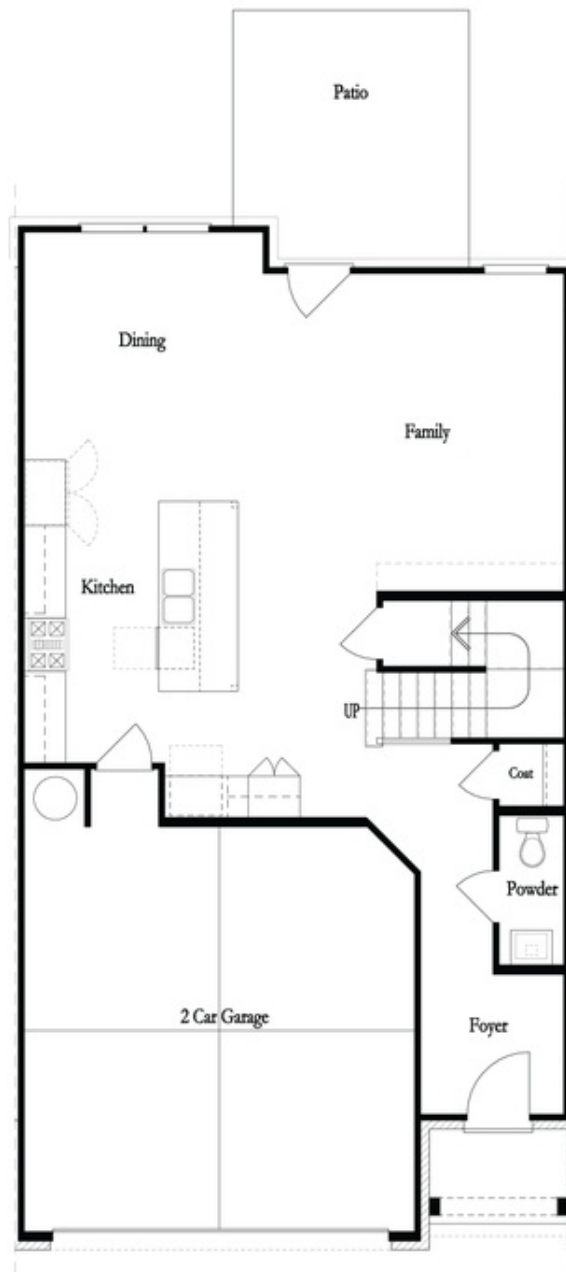
**Want to Know More  
About This Home?**

**CONTACT OUR COMMUNITY SALES MANAGER  
Call Us @ 470.248.2097**



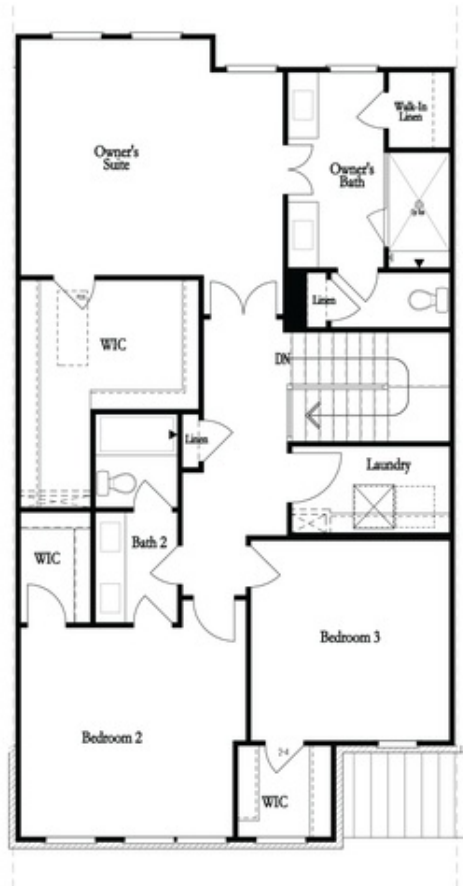
Want to Know More  
About This Home?

CONTACT OUR COMMUNITY SALES MANAGER  
Call Us @ 470.248.2097

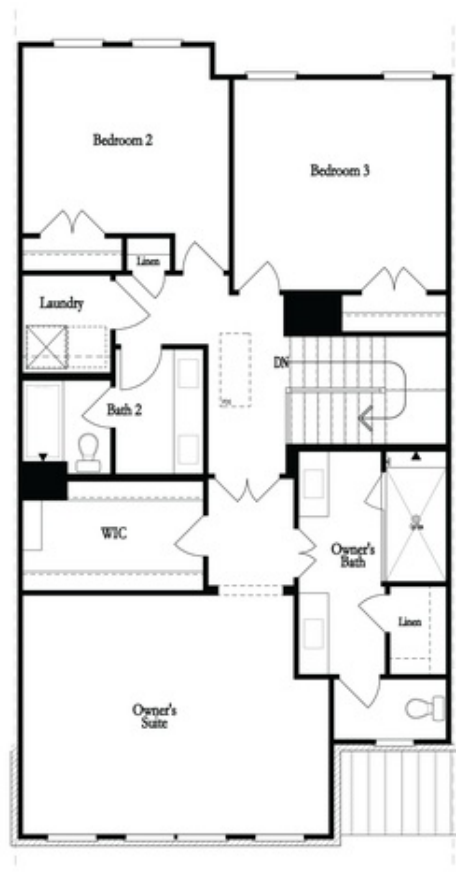


Want to Know More  
About This Home?

CONTACT OUR COMMUNITY SALES MANAGER  
Call Us @ 470.248.2097



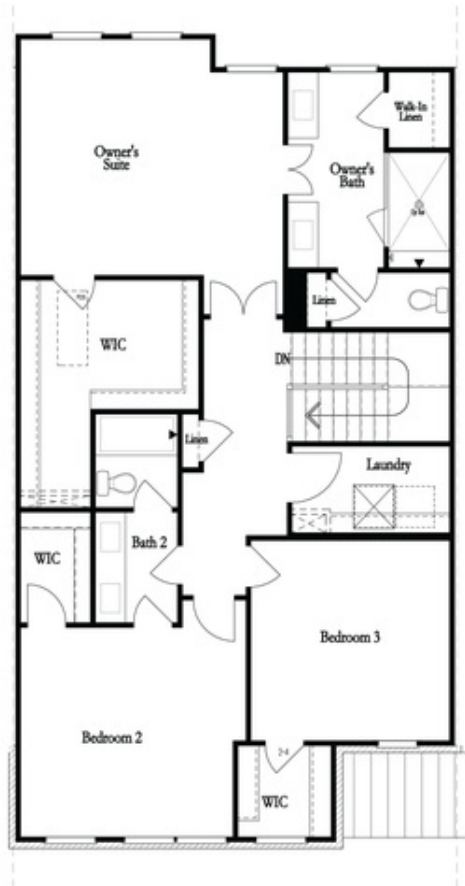
Second Floor - Owner's Rear



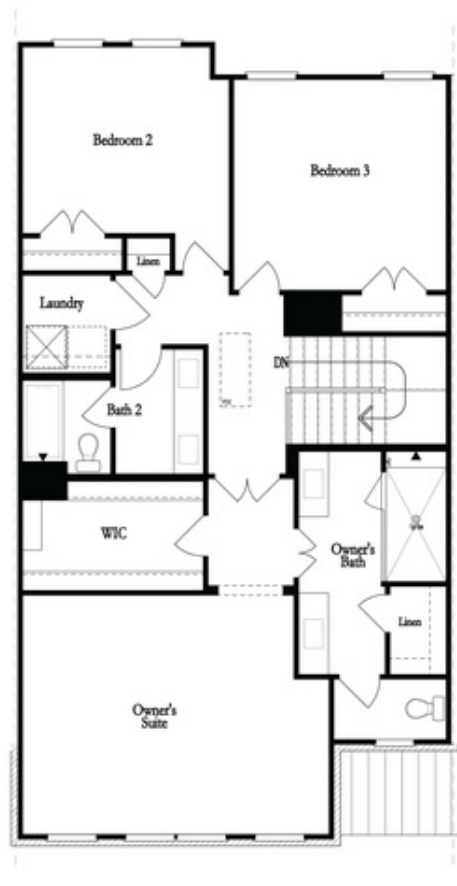
Second Floor - Owner's Front

Want to Know More  
About This Home?

CONTACT OUR COMMUNITY SALES MANAGER  
Call Us @ 470.248.2097



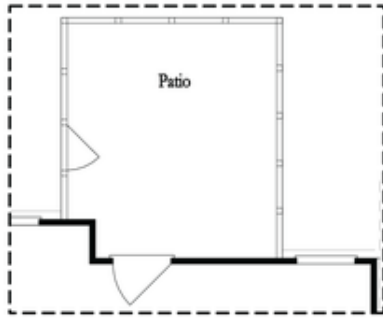
Second Floor - Owner's Rear



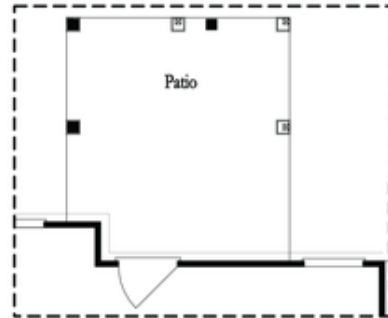
Second Floor - Owner's Front

Want to Know More  
About This Home?

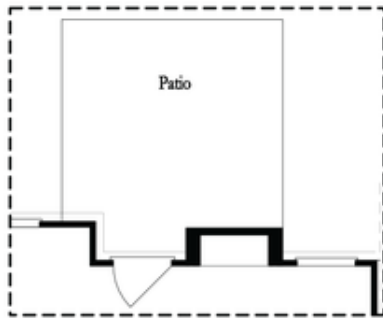
CONTACT OUR COMMUNITY SALES MANAGER  
Call Us @ 470.248.2097



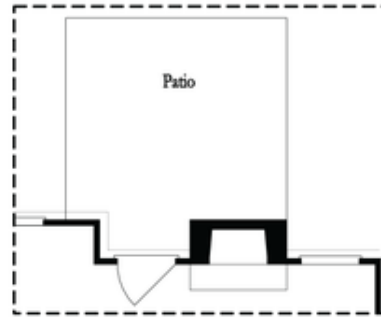
Opt. Screened Patio



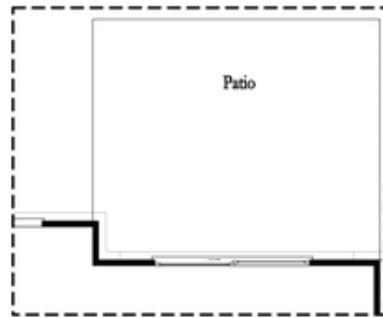
Opt. Coverd Patio



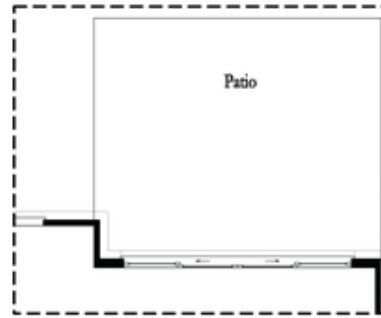
Opt. Linear Fireplace



Opt. Fireplace



Opt. 8 Foot Slider Door

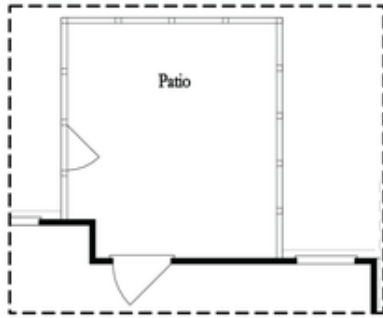


Opt. 12 Foot Slider Door

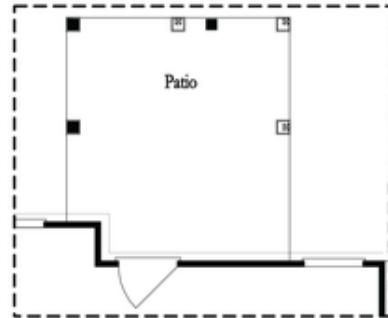
Main Level Options

Want to Know More  
 About This Home?

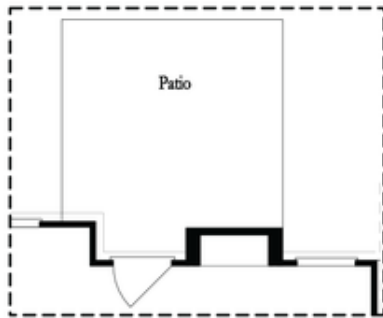
CONTACT OUR COMMUNITY SALES MANAGER  
 Call Us @ 470.248.2097



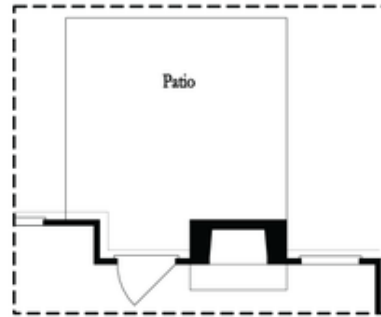
Opt. Screened Patio



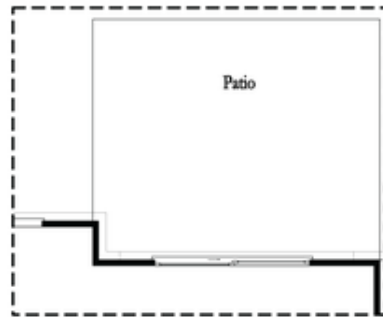
Opt. Coverd Patio



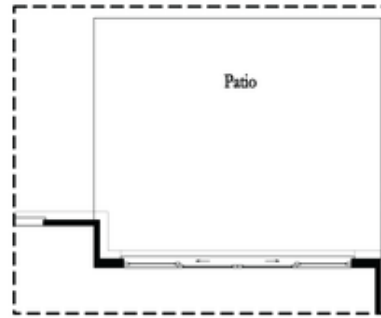
Opt. Linear Fireplace



Opt. Fireplace



Opt. 8 Foot Slider Door

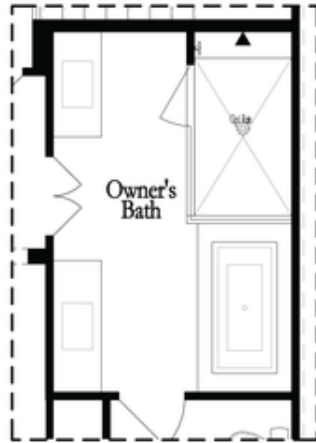


Opt. 12 Foot Slider Door

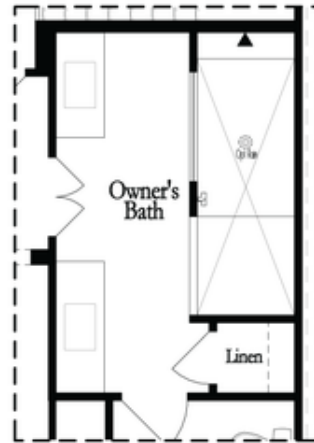
Main Level Options

Want to Know More  
 About This Home?

CONTACT OUR COMMUNITY SALES MANAGER  
 Call Us @ 470.248.2097

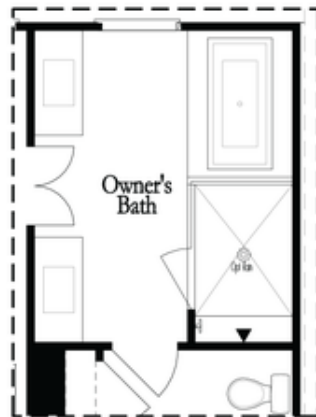


Opt. Shower/Tub

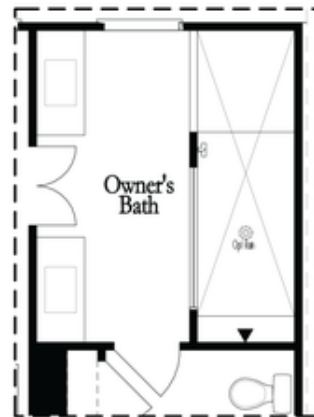


Opt. Walk-Through Shower

Owner's Front - Options



Opt. Shower/Tub



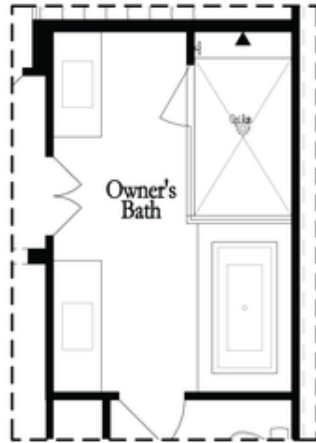
Opt. Walk-Through Shower

Owner's Rear - Options

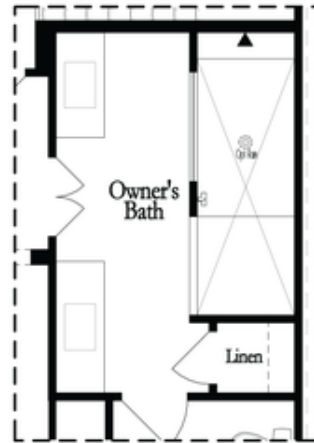
Want to Know More  
 About This Home?

CONTACT OUR COMMUNITY SALES MANAGER  
 Call Us @ 470.248.2097



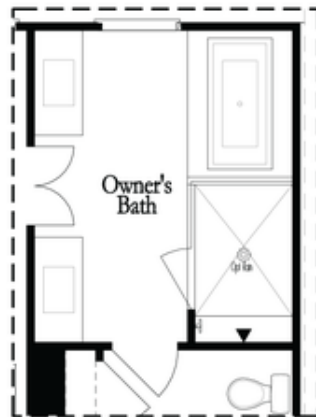


Opt. Shower/Tub

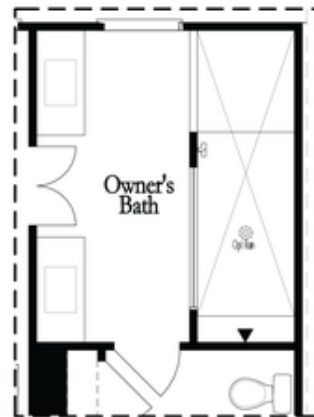


Opt. Walk-Through Shower

Owner's Front - Options



Opt. Shower/Tub



Opt. Walk-Through Shower

Owner's Rear - Options

Want to Know More  
 About This Home?

CONTACT OUR COMMUNITY SALES MANAGER  
 Call Us @ 470.248.2097