



PRICED AT  
**\$548,840**

 2010 Sq Ft

 3 Beds

 2.5 Baths

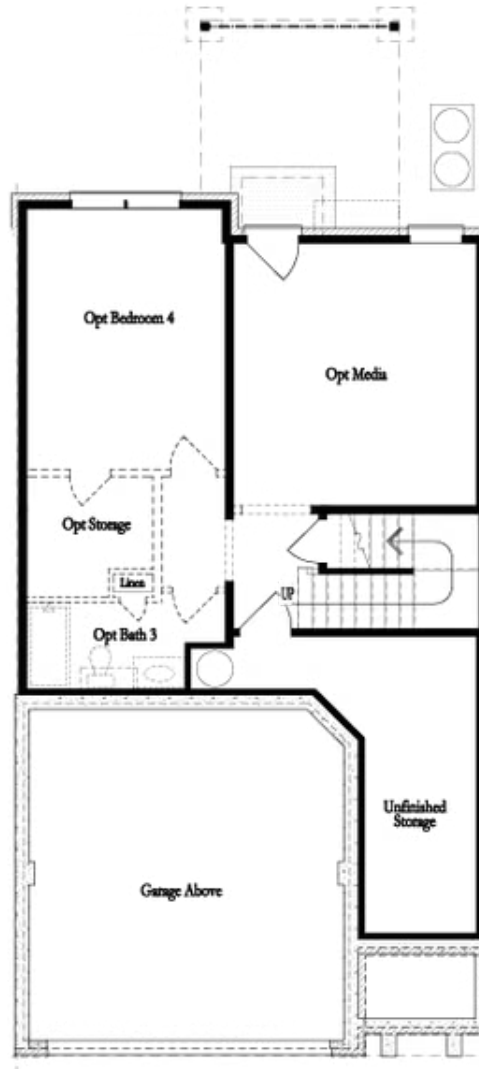
 2 Car Garage

 2.0 Story

“Elevate your savings with \$45,000 Promotion on contracts written in March 2026. Incentive Already Applied on the Purchase Price but can be used towards closing costs, rate buydown and more giving you the flexibility to save where it matters most - Hurry Ends Soon. Plus, an additional \$10,000 in closing costs with one of our Preferred Lenders. Discover the The Stockton by The Providence Group. \*\* MOVE IN READY !!! \*\*\* Welcome to the Popular Stockton floorplan - A fabulous Two-story Townhome on UNFINISHED BASEMENT with covered porch and fenced backyard!!!! Blinds , Washer Dryer and Fridge included on main and 2nd floor. Homesite 157 offers an easy entry on the main level with a front entry garage. This home offers our timeless Cool Linen design package. A Private foyer on the main level with hard surface floors leads you to a Gourmet Kitchen with an oversized island and quartz countertops. The dining & family room connect seamlessly, and the family room has an amazing amount of natural light leading onto your covered porch perfect for entertaining and relaxing. When you head to the 2nd floor you will enter a spacious owner's suite that offers a master bath with dual ...

**Want to Know More  
About This Home?**

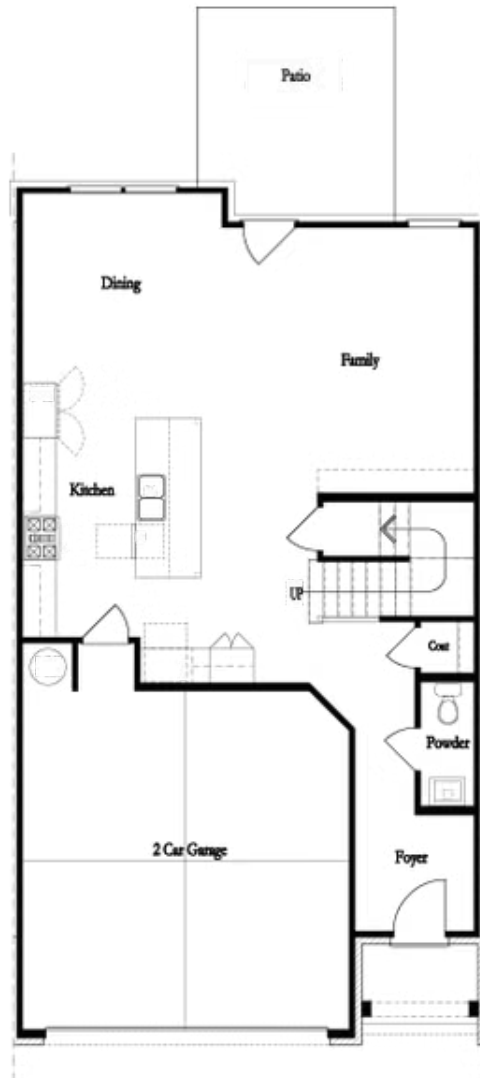
CONTACT OUR COMMUNITY SALES MANAGER  
Call Us @ 470.248.2097



**Unfinished Basement**

**Want to Know More  
About This Home?**

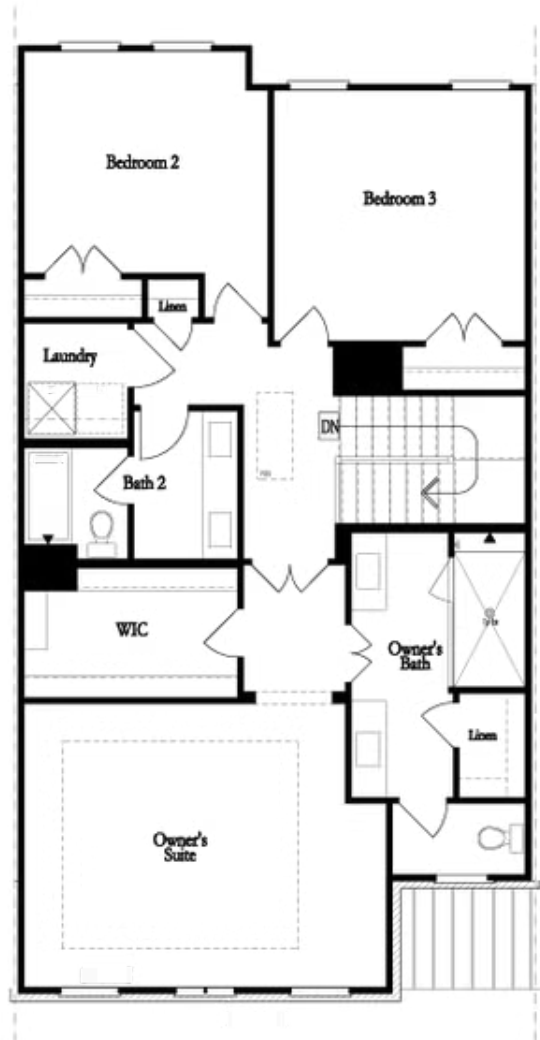
CONTACT OUR COMMUNITY SALES MANAGER  
Call Us @ 470.248.2097



**First Floor**

**Want to Know More  
About This Home?**

CONTACT OUR COMMUNITY SALES MANAGER  
Call Us @ 470.248.2097

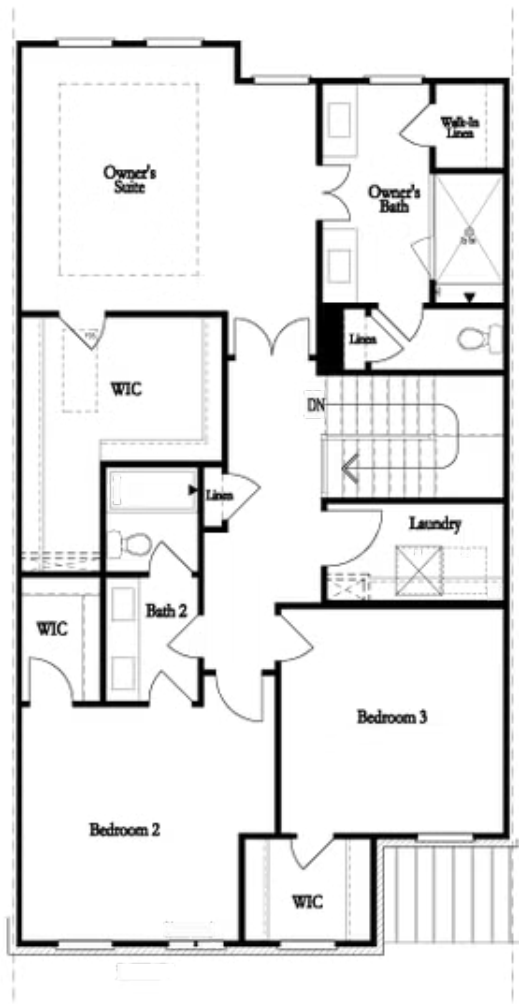


**Second Floor**  
**(Owner's Front)**

**Elevations G, H, JI, J3 & L**

**Want to Know More  
About This Home?**

CONTACT OUR COMMUNITY SALES MANAGER  
Call Us @ 470.248.2097

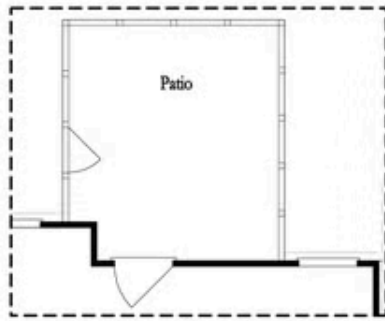


Second Floor  
(Owner's Rear)

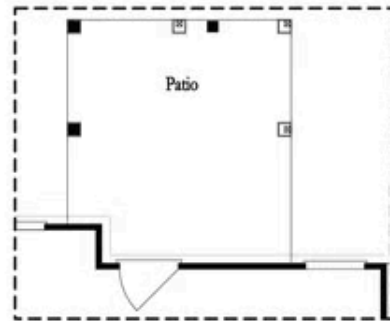
Elevations G, H, JI, J3 & L

Want to Know More  
About This Home?

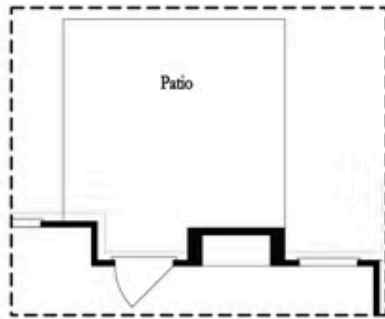
CONTACT OUR COMMUNITY SALES MANAGER  
Call Us @ 470.248.2097



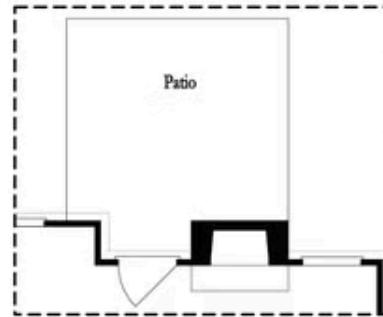
Opt. Screened Patio



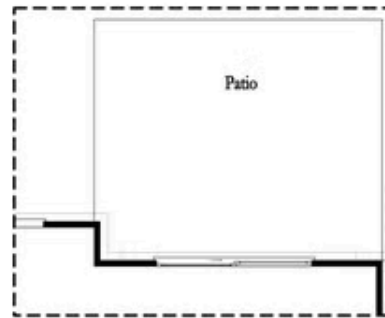
Opt. Coverd Patio



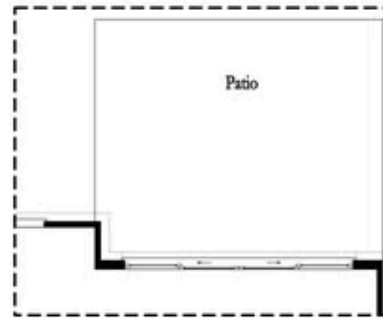
Opt. Linear Fireplace



Opt. Fireplace



Opt. 8 Foot Slider Door

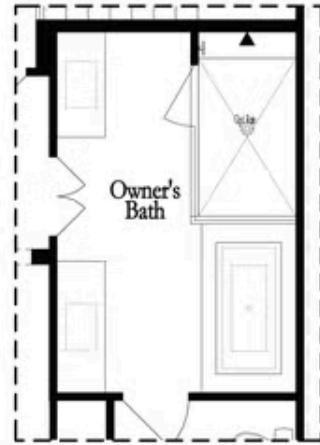


Opt. 12 Foot Slider Door

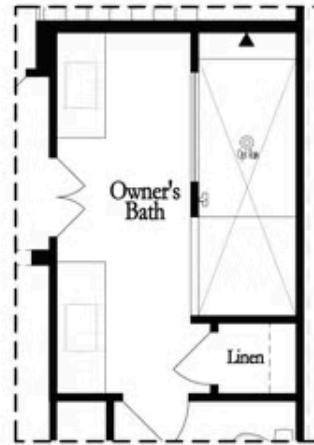
Main Level Options

Want to Know More  
 About This Home?

CONTACT OUR COMMUNITY SALES MANAGER  
 Call Us @ 470.248.2097

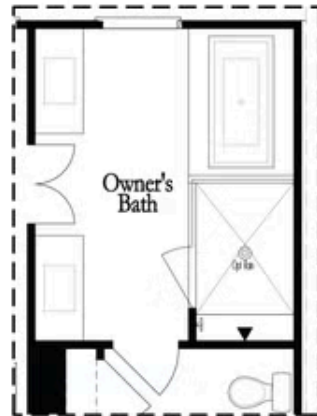


Opt. Shower/Tub



Opt. Walk-Through Shower

Owner's Front - Options



Opt. Shower/Tub



Opt. Walk-Through Shower

Owner's Rear - Options

Want to Know More  
 About This Home?

CONTACT OUR COMMUNITY SALES MANAGER  
 Call Us @ 470.248.2097