



PRICED AT
\$559,400

 2030 Sq Ft

 3 Beds

 2.5 Baths

 2 Car Garage

 2.0 Story

Season of Savings- Build your Savings and Unwrap the Joy of a New Home with \$35,000 Promotion! Promotions can be applied towards a price reduction, upgraded appliances, closing cost, Rate-Buy down and more- giving you the flexibility to save where it matters most. Ends November 30, 2025 - Discover the The Stockton by The Providence Group. MOVE IN READY - Lot #164, offers an easy entrance on the main level for both your guests/family and you with front entry garage, very convenient for groceries. Private front entrance/foyer on main level with hard surface floors leads you into an open concept with family room, kitchen, and dining. Family room features an 8 ft sliding door that provides lots of natural light and leads out to a covered patio and fenced backyard. Love the covered patio for rainy days, snowy days, or its too bright out days. Watch your pets and family enjoy the fenced in backyard while grilling out or sipping on coffee all from outside or inside the home. Gourmet kitchen has Quartz countertops with large island and on trend cabinets with the perimeter being a vanilla color and the island a caramel color, Warm Wheat collection. When heading up ...

**Want to Know More
About This Home?**

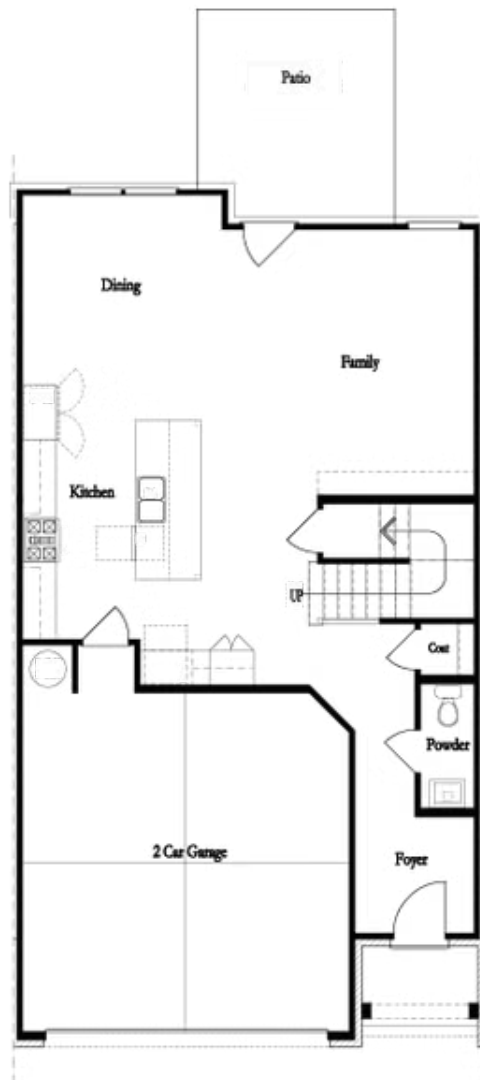
CONTACT OUR COMMUNITY SALES MANAGER
Call Us @ 470.248.2097



Unfinished Basement

Want to Know More
About This Home?

CONTACT OUR COMMUNITY SALES MANAGER
Call Us @ 470.248.2097



First Floor

**Want to Know More
About This Home?**

CONTACT OUR COMMUNITY SALES MANAGER
Call Us @ 470.248.2097



Second Floor
(Owner's Front)

Elevations G, H, J1, J3 & L

Want to Know More
About This Home?

CONTACT OUR COMMUNITY SALES MANAGER
Call Us @ 470.248.2097



Second Floor
(Owner's Rear)

Elevations G, H, J1, J3 & L

Want to Know More
About This Home?

CONTACT OUR COMMUNITY SALES MANAGER
Call Us @ 470.248.2097



Opt. Screened Patio



Opt. Coverd Patio



Opt. Linear Fireplace



Opt. Fireplace



Opt. 8 Foot Slider Door

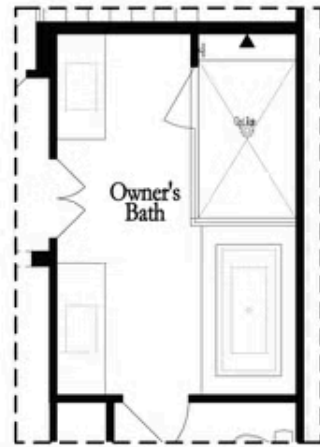


Opt. 12 Foot Slider Door

Main Level Options

Want to Know More
About This Home?

CONTACT OUR COMMUNITY SALES MANAGER
Call Us @ 470.248.2097

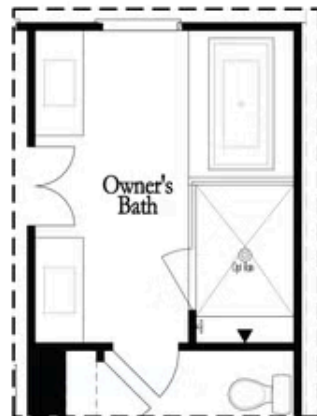


Opt. Shower/Tub



Opt. Walk-Through Shower

Owner's Front - Options



Opt. Shower/Tub



Opt. Walk-Through Shower

Owner's Rear - Options

Want to Know More
About This Home?

CONTACT OUR COMMUNITY SALES MANAGER
Call Us @ 470.248.2097