



PRICED AT  
**\$618,750**

 2010 Sq Ft

 3 Beds

 2.5 Baths

 2 Car Garage

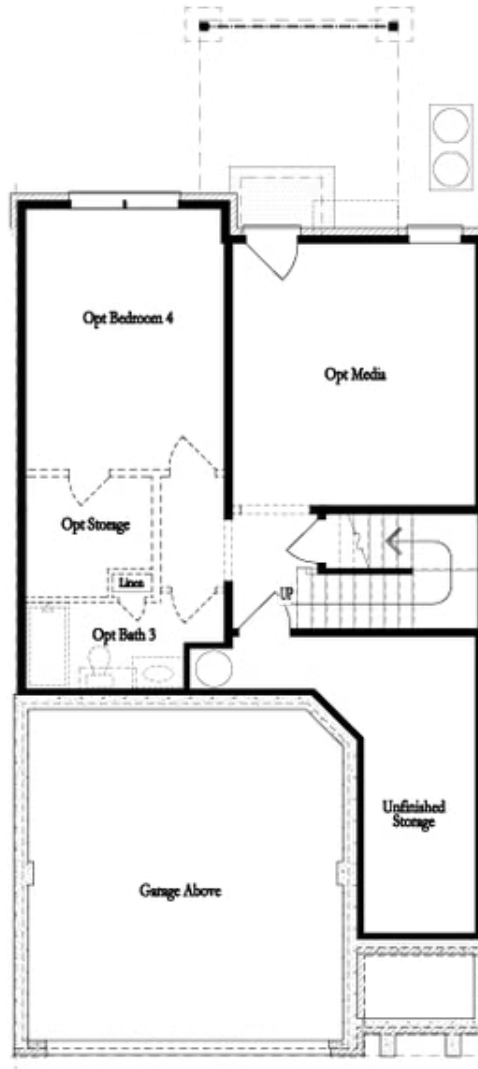
 2.0 Story

Move in Ready Home!! Spring into a New Home! Limited Time, Don't Miss Out\*\*\*Use \$30K Anyway for Contracts Written in April\*\*\* Welcome to the Stockton floorplan - End Unit!!! A Two story Townhome on UNFINISHED BASEMENT! Blinds included on main floor and 2nd floor. Homesite 154 offers an easy entry on the main level with a front entry garage. This home is Owner's Rear configuration and has Warm Slate design package. A Private foyer on the main level with hard surface floors leads you to a Gourmet Kitchen with an oversized island and quartz countertops. The dining & family room connect seamlessly and the family room has tons of natural light with 12ft sliding doors leading onto your covered porch looking out onto your fenced backyard below. Perfect place to Head outdoors and relax and entertain on your Covered deck as well as enjoying your fenced backyard. When you head to the 2nd floor you will enter a spacious owner's suite that offers dual vanities with quartz countertops, Frameless Large Shower as well as a separate tub for soaking. The laundry room is located in the hallway on the upper level along with 2 secondary bedrooms and shared bath. The ...

**Want to Know More  
About This Home?**

CONTACT OUR COMMUNITY SALES MANAGER  
Call Us @ 470.248.2097

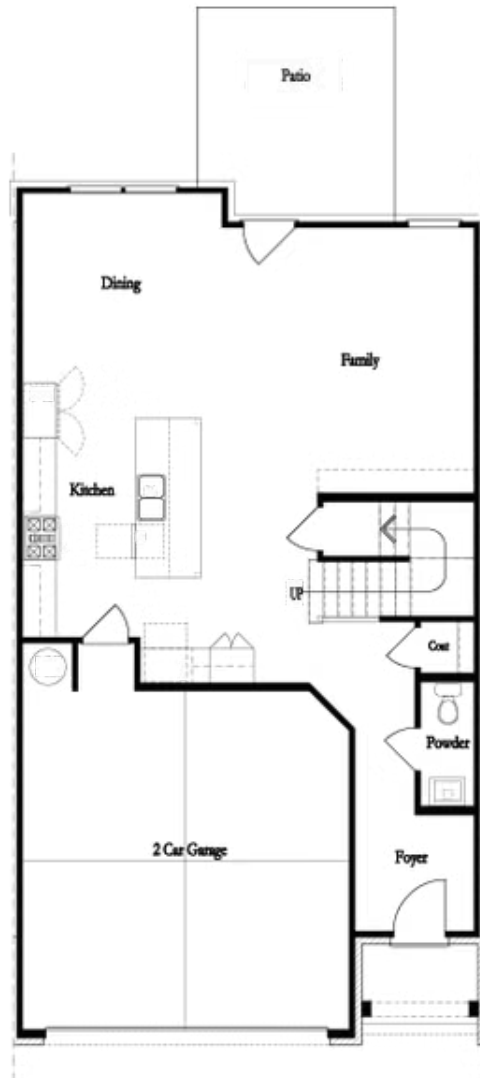




**Unfinished Basement**

**Want to Know More  
About This Home?**

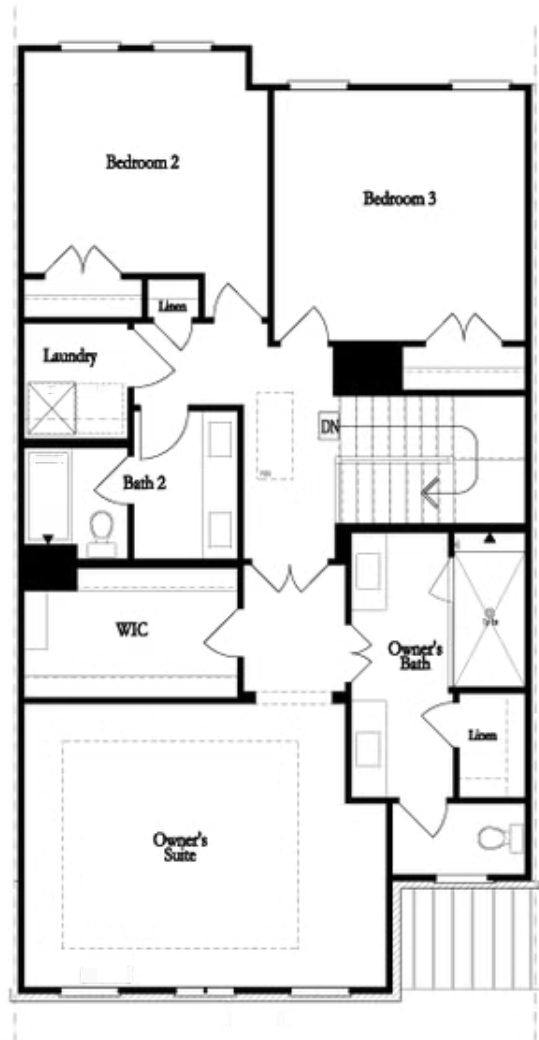
CONTACT OUR COMMUNITY SALES MANAGER  
Call Us @ 470.248.2097



**First Floor**

**Want to Know More  
About This Home?**

CONTACT OUR COMMUNITY SALES MANAGER  
Call Us @ 470.248.2097

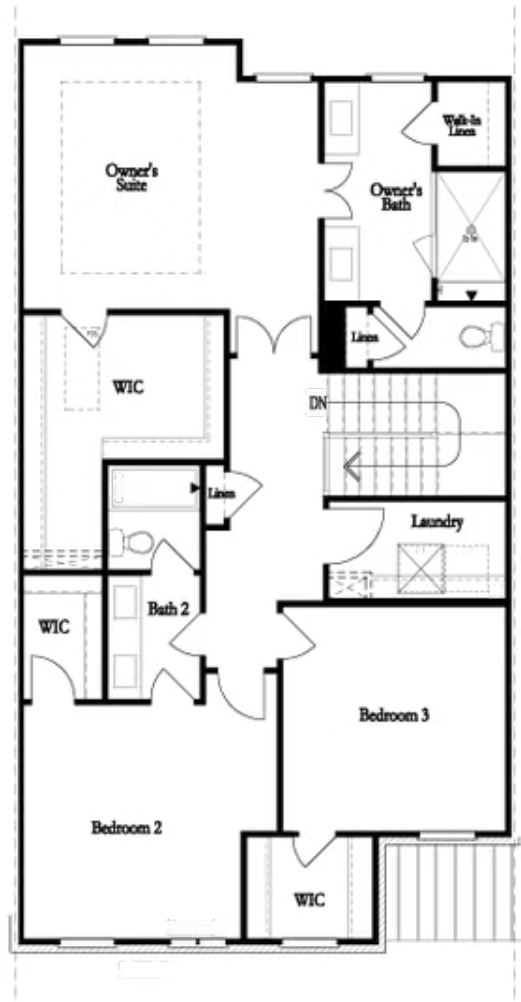


**Second Floor**  
**(Owner's Front)**

Elevations G, H, JI, J3 & L

**Want to Know More  
About This Home?**

CONTACT OUR COMMUNITY SALES MANAGER  
Call Us @ 470.248.2097

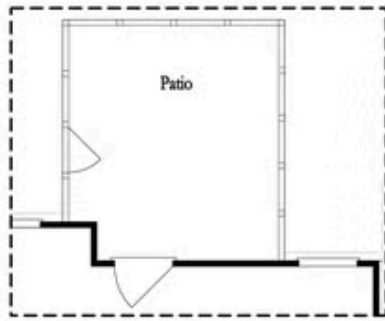


Second Floor  
(Owner's Rear)

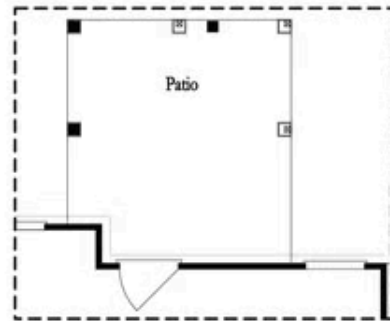
Elevations G, H, JI, J3 & L

Want to Know More  
About This Home?

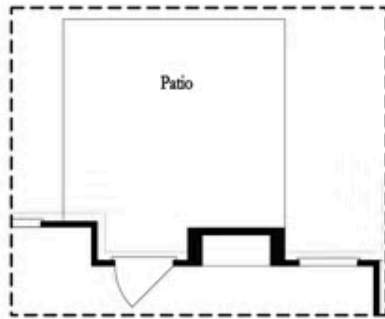
CONTACT OUR COMMUNITY SALES MANAGER  
Call Us @ 470.248.2097



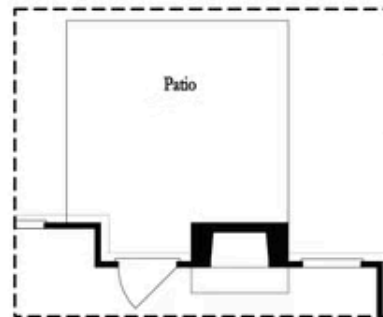
Opt. Screened Patio



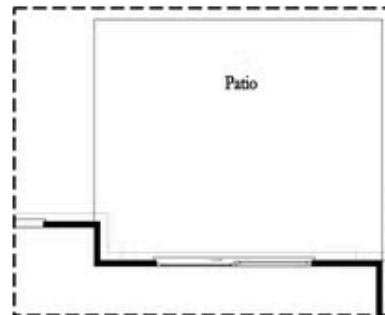
Opt. Coverd Patio



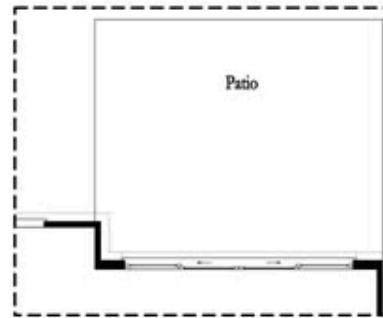
Opt. Linear Fireplace



Opt. Fireplace



Opt. 8 Foot Slider Door

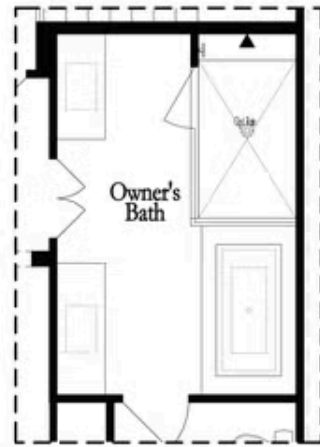


Opt. 12 Foot Slider Door

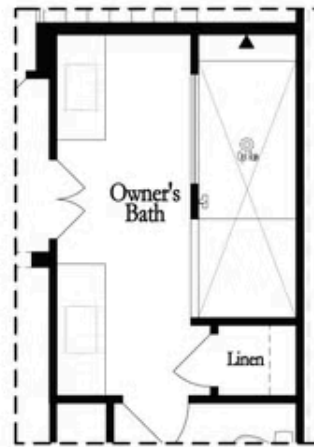
Main Level Options

Want to Know More  
 About This Home?

CONTACT OUR COMMUNITY SALES MANAGER  
 Call Us @ 470.248.2097

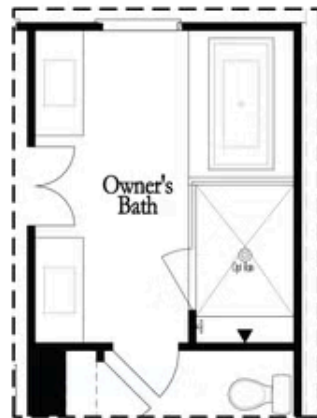


Opt. Shower/Tub



Opt. Walk-Through Shower

Owner's Front - Options



Opt. Shower/Tub



Opt. Walk-Through Shower

Owner's Rear - Options

Want to Know More  
About This Home?

CONTACT OUR COMMUNITY SALES MANAGER  
Call Us @ 470.248.2097