




PRICED AT  
**\$549,400**

 2030 Sq Ft

 3 Beds

 2.5 Baths

 2 Car Garage

 2.0 Story

Spring into a New Home! Fabulous Move in Ready Two Story Townhome in the Highly Sought after community of Millcroft! Stockton Floor Plan by The Providence Group! New Construction - Lot #172, Easy walk in entrance on the main level with front entry garage, Very convenient for groceries. Private front entrance/foyer with an area at the front door for a nice drop zone for keys, shoes, purse, etc. - hard surface floors leads you into an open concept layout with family room, kitchen, and dining. Family room features an 8 ft sliding door that provides lots of natural light and leads out to a covered patio and fenced backyard. You will love this feature that is great for grilling out, watching family and friends, pets, relaxing, put up an outdoor TV, use your imagination with the space. Gourmet kitchen has white cabinets, Quartz countertops with oversized island, single bowl sink, slide in gas range, built in microwave, and dishwasher. Cool Linen Collection. When heading up to the second floor the stairs are oak treads and will lead you into the owners bedroom which is in the rear of the home, as you enter your generous sized owners bedroom, you will ...

**Want to Know More  
About This Home?**

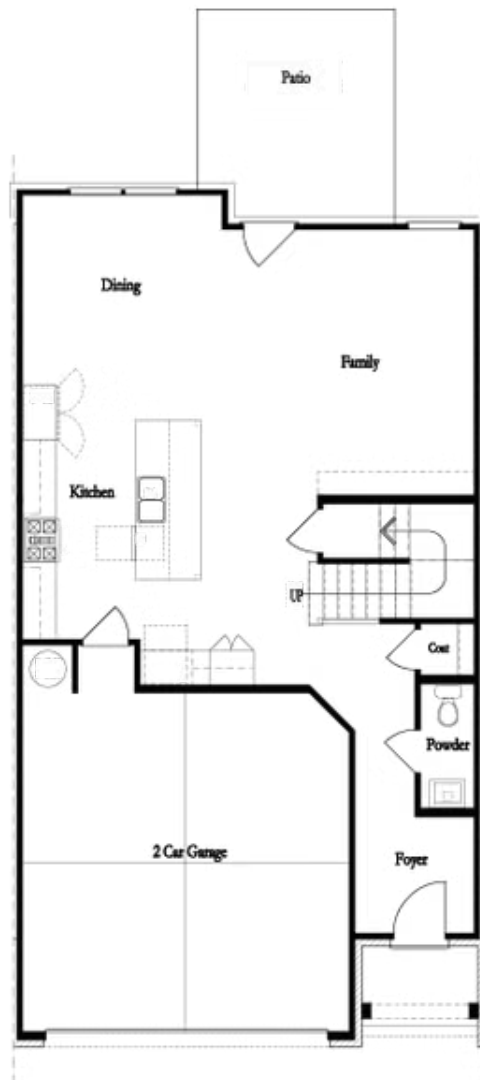
CONTACT OUR COMMUNITY SALES MANAGER  
Call Us @ 470.248.2097



Unfinished Basement

Want to Know More  
About This Home?

CONTACT OUR COMMUNITY SALES MANAGER  
Call Us @ 470.248.2097



**First Floor**

**Want to Know More  
About This Home?**

CONTACT OUR COMMUNITY SALES MANAGER  
Call Us @ 470.248.2097



Second Floor  
(Owner's Front)

Elevations G, H, J1, J3 & L

Want to Know More  
About This Home?

CONTACT OUR COMMUNITY SALES MANAGER  
Call Us @ 470.248.2097



Second Floor  
(Owner's Rear)

Elevations G, H, J1, J3 & L

Want to Know More  
About This Home?

CONTACT OUR COMMUNITY SALES MANAGER  
Call Us @ 470.248.2097



Opt. Screened Patio



Opt. Coverd Patio



Opt. Linear Fireplace



Opt. Fireplace



Opt. 8 Foot Slider Door

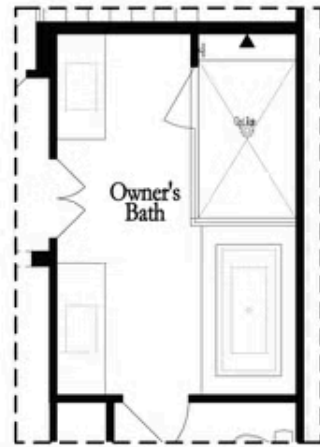


Opt. 12 Foot Slider Door

### Main Level Options

Want to Know More  
About This Home?

CONTACT OUR COMMUNITY SALES MANAGER  
Call Us @ 470.248.2097

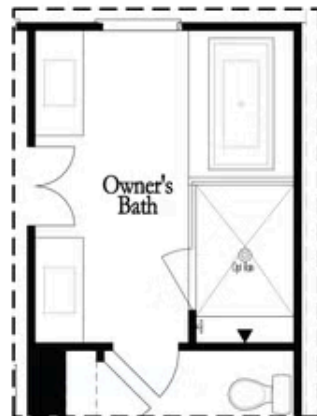


Opt. Shower/Tub



Opt. Walk-Through Shower

Owner's Front - Options



Opt. Shower/Tub



Opt. Walk-Through Shower

Owner's Rear - Options

Want to Know More  
About This Home?

CONTACT OUR COMMUNITY SALES MANAGER  
Call Us @ 470.248.2097