




PRICED AT
\$549,400

 2030 Sq Ft

 3 Beds

 2.5 Baths

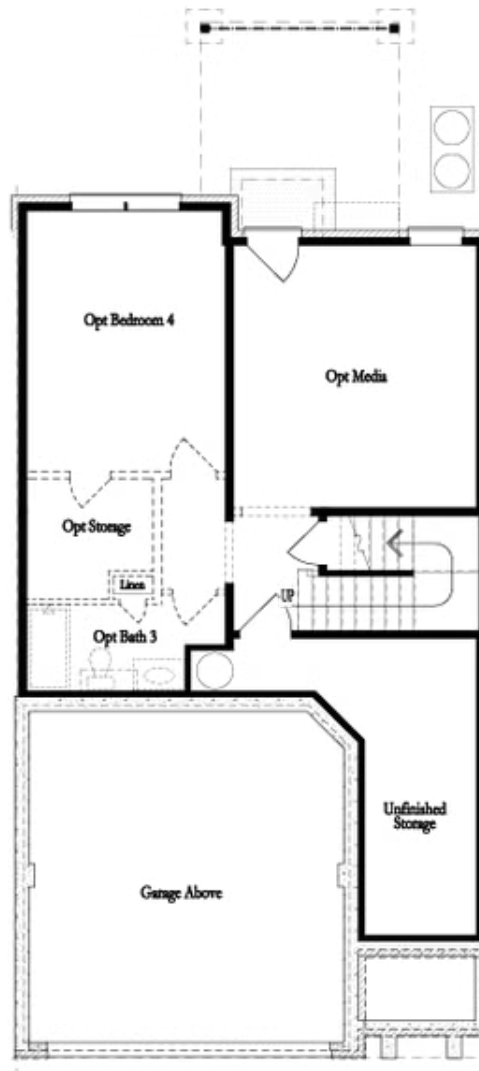
 2 Car Garage

 2.0 Story

Fall Into Savings with \$45K.**** Personalize Your Space with Your Style – use it toward low rates, upgrades, appliances, closing costs & more. Ends October 31, 2025 Fabulous Move in Ready Two Story Townhome in the Highly Sought after community of Millcroft! Stockton Floor Plan by The Providence Group! New Construction - Lot #172, Easy walk in entrance on the main level with front entry garage, Very convenient for groceries. Private front entrance/foyer with an area at the front door for a nice drop zone for keys, shoes, purse, etc. - hard surface floors leads you into an open concept layout with family room, kitchen, and dining. Family room features an 8 ft sliding door that provides lots of natural light and leads out to a covered patio and fenced backyard. You will love this feature that is great for grilling out, watching family and friends, pets, relaxing, put up an outdoor TV, use your imagination with the space. Gourmet kitchen has white cabinets, Quartz countertops with oversized island, single bowl sink, slide in gas range, built in microwave, and dishwasher. Cool Linen Collection. When heading up to the second floor the stairs are oak treads and will lead you ...

Want to Know More
About This Home?

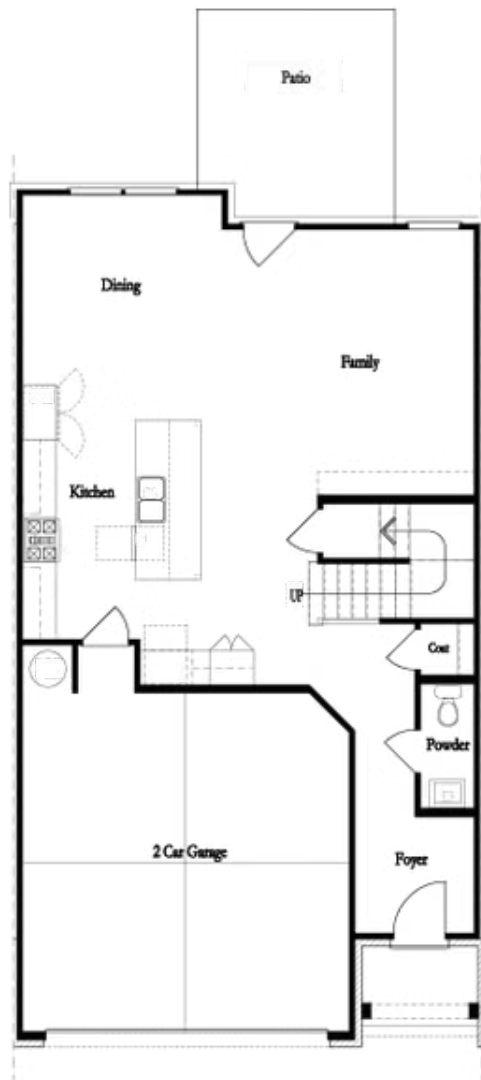
CONTACT OUR COMMUNITY SALES MANAGER
Call Us @ 470.248.2097



Unfinished Basement

Want to Know More
About This Home?

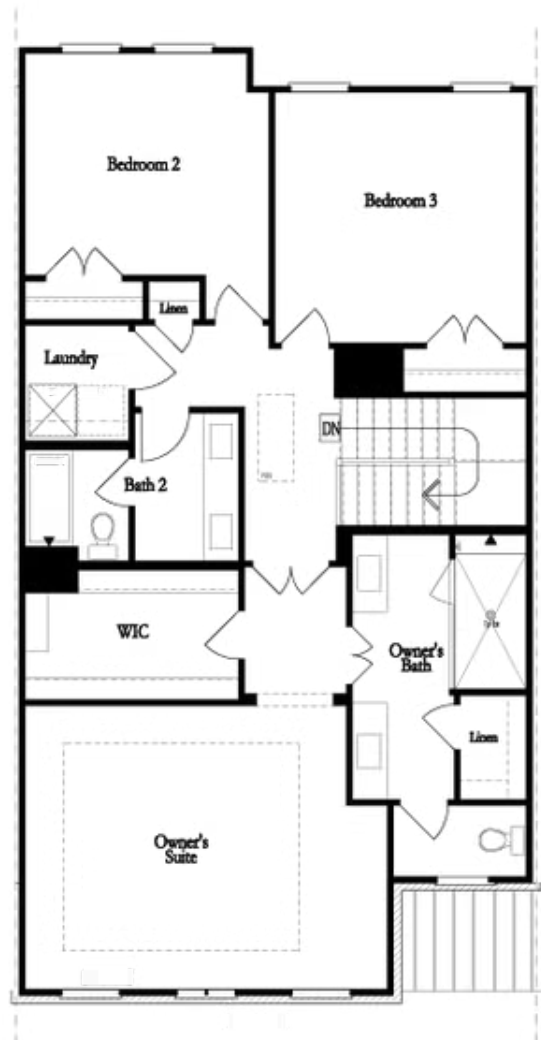
CONTACT OUR COMMUNITY SALES MANAGER
Call Us @ 470.248.2097



First Floor

**Want to Know More
About This Home?**

CONTACT OUR COMMUNITY SALES MANAGER
Call Us @ 470.248.2097

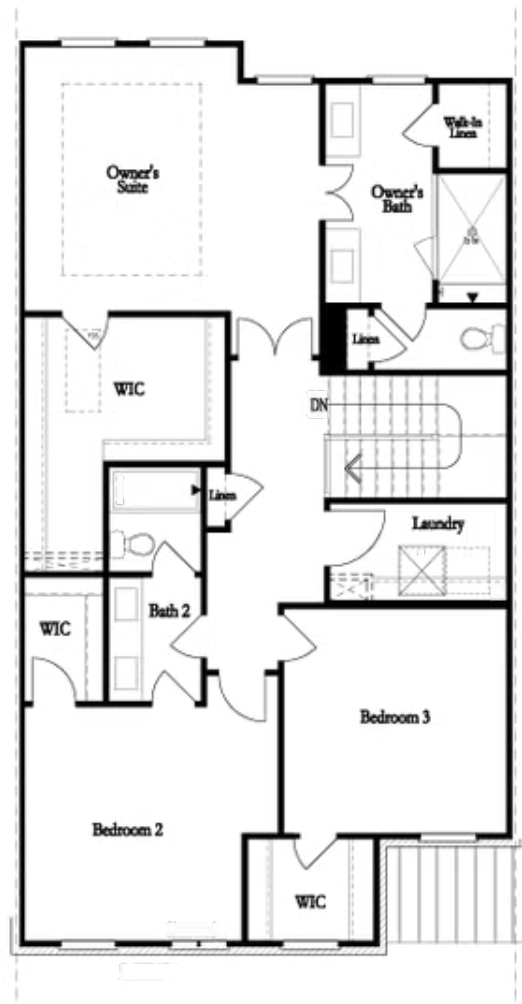


Second Floor
(Owner's Front)

Elevations G, H, J1, J3 & L

Want to Know More
About This Home?

CONTACT OUR COMMUNITY SALES MANAGER
Call Us @ 470.248.2097

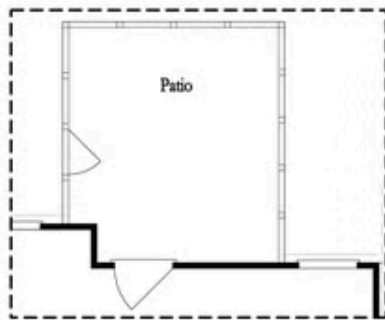


Second Floor
(Owner's Rear)

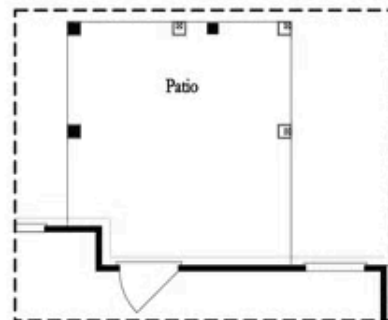
Elevations G, H, J1, J3 & L

Want to Know More
About This Home?

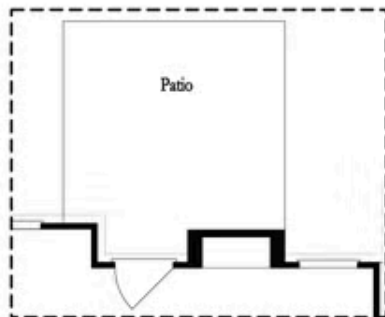
CONTACT OUR COMMUNITY SALES MANAGER
Call Us @ 470.248.2097



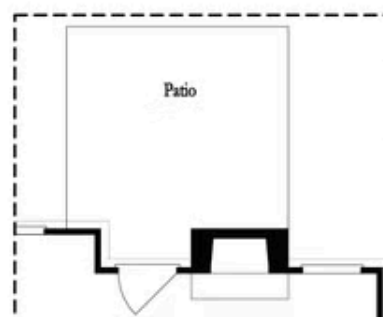
Opt. Screened Patio



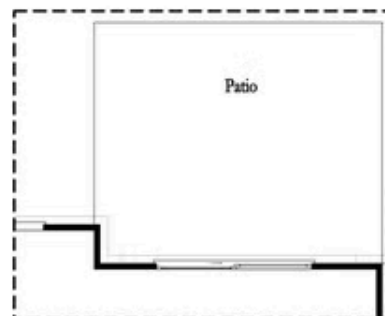
Opt. Coverd Patio



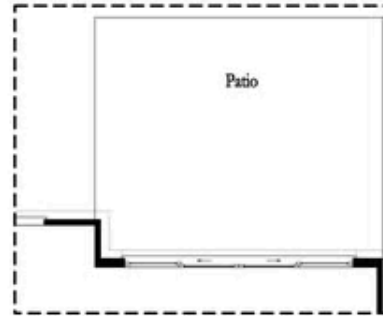
Opt. Linear Fireplace



Opt. Fireplace



Opt. 8 Foot Slider Door

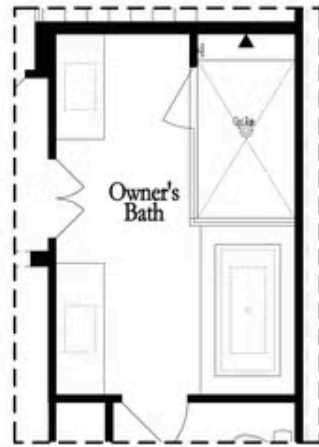


Opt. 12 Foot Slider Door

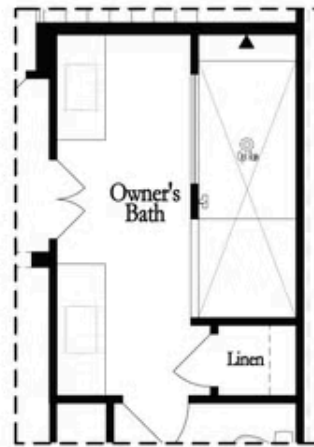
Main Level Options

Want to Know More
About This Home?

CONTACT OUR COMMUNITY SALES MANAGER
Call Us @ 470.248.2097

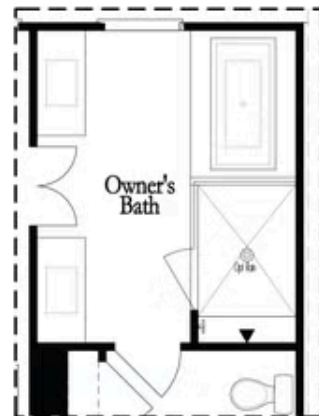


Opt. Shower/Tub



Opt. Walk-Through Shower

Owner's Front - Options



Opt. Shower/Tub



Opt. Walk-Through Shower

Owner's Rear - Options

Want to Know More
About This Home?

CONTACT OUR COMMUNITY SALES MANAGER
Call Us @ 470.248.2097