



PRICED AT
\$560,880

 2030 Sq Ft

 3 Beds

 2.5 Baths

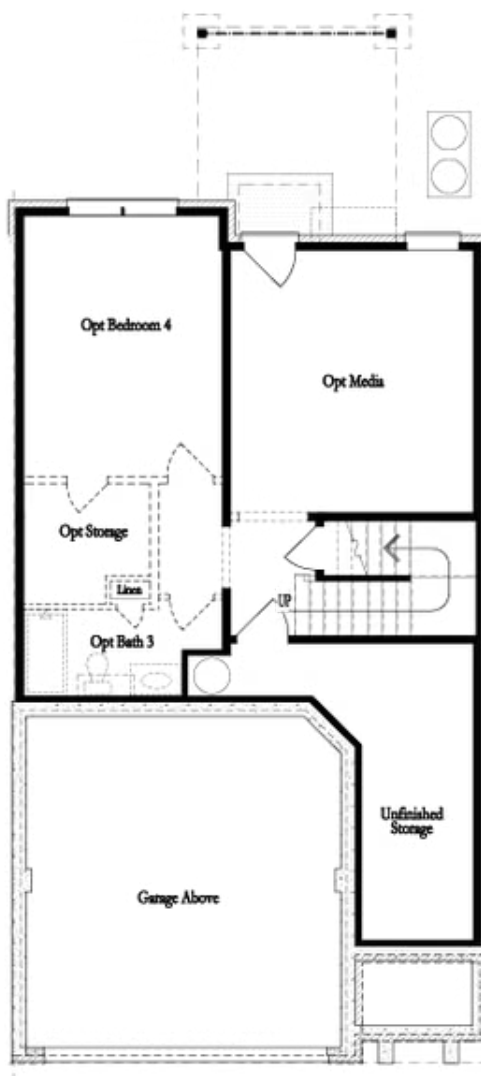
 2 Car Garage

 2.0 Story

"New Year, New Home - Enjoy \$40,000 Promotion on contracts written by end of January. Promotion can be applied towards a price reduction, closing costs, rate buydown and more giving you the flexibility to save where it matters most. Ends January 31, 2026.. Discover the The Stockton by The Providence Group. Move in Ready Now with blinds included - This home is in a great location within the community and is our last two story townhome that is move in ready! You can be in before the Holidays or the New Year! Come inside to this beautiful home, 9ft. ceilings on first and second floors. Entry/foyer offers a space for a place to put shoes, keys, hats, umbrellas, etc. As you enter the home, you will find a coat closet and powder room. The kitchen on the main floor will offer open concept living at its best, huge kitchen island - quartz countertops, SS single bowl sink, garbage disposal, backsplash/tile to the ceiling behind the hood, 42" upper kitchen cabinets- soft close doors and drawers in the kitchen, built in microwave for a sleek/clean look. Seating in the dining area for at least a table of six. Family room furniture ...

Want to Know More
About This Home?

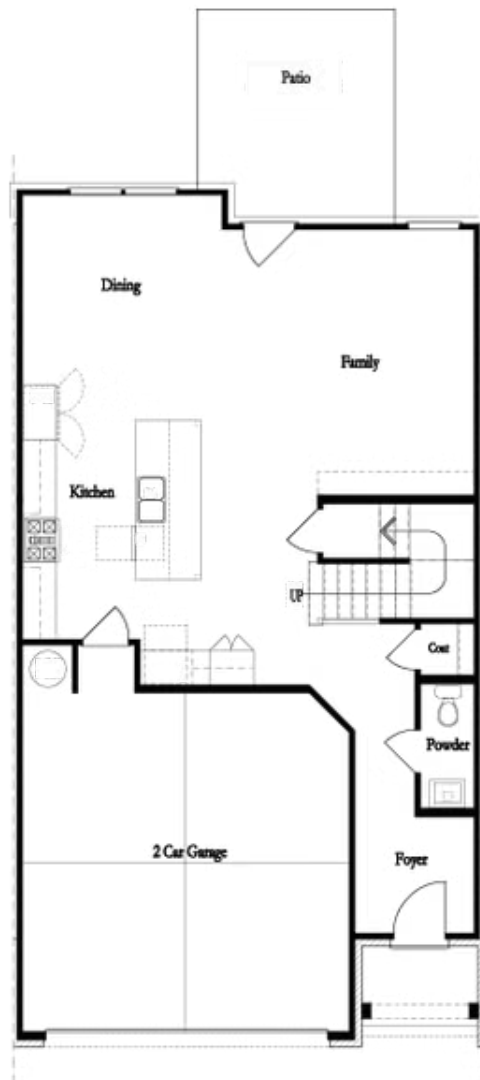
CONTACT OUR COMMUNITY SALES MANAGER
Call Us @ 470.248.2097



Unfinished Basement

Want to Know More
About This Home?

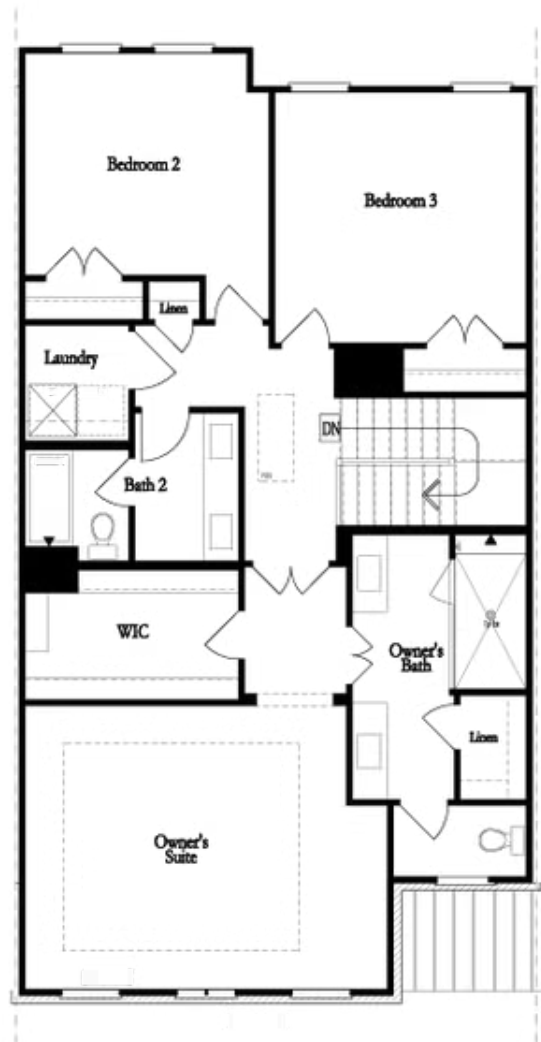
CONTACT OUR COMMUNITY SALES MANAGER
Call Us @ 470.248.2097



First Floor

**Want to Know More
About This Home?**

CONTACT OUR COMMUNITY SALES MANAGER
Call Us @ 470.248.2097

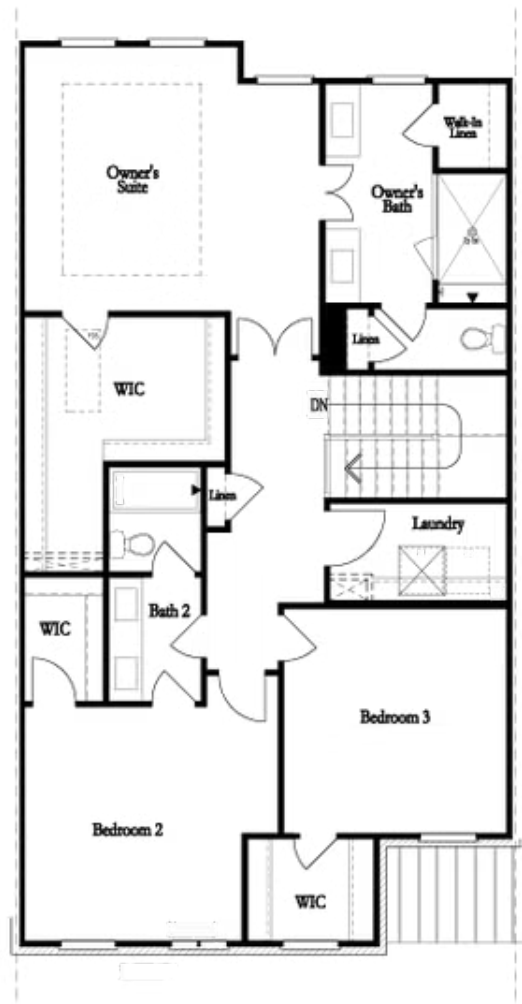


Second Floor
(Owner's Front)

Elevations G, H, J1, J3 & L

Want to Know More
About This Home?

CONTACT OUR COMMUNITY SALES MANAGER
Call Us @ 470.248.2097

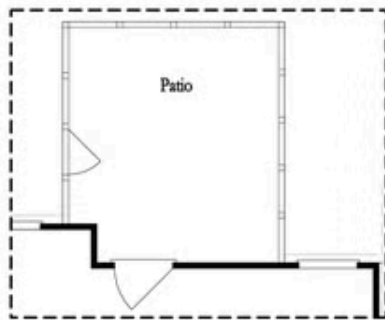


Second Floor
(Owner's Rear)

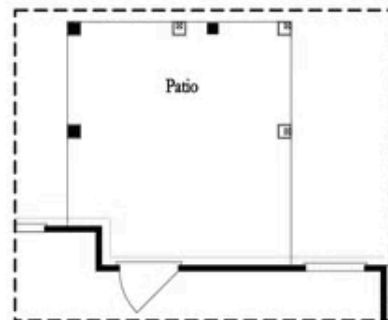
Elevations G, H, J1, J3 & L

Want to Know More
About This Home?

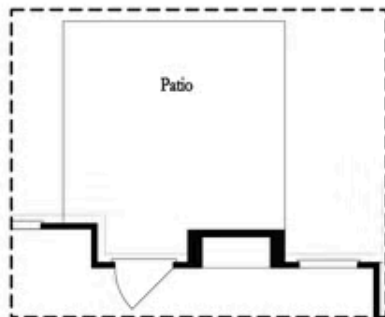
CONTACT OUR COMMUNITY SALES MANAGER
Call Us @ 470.248.2097



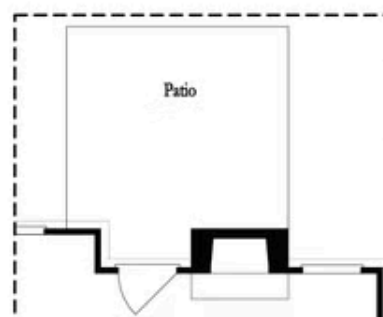
Opt. Screened Patio



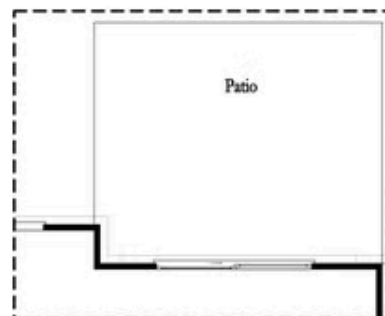
Opt. Coverd Patio



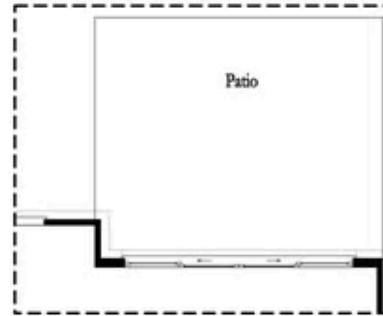
Opt. Linear Fireplace



Opt. Fireplace



Opt. 8 Foot Slider Door

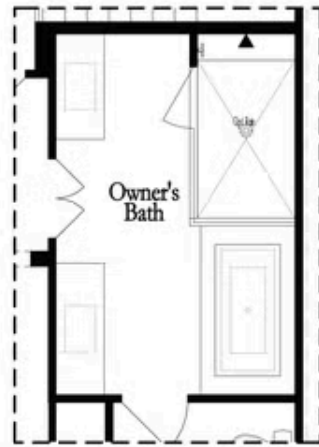


Opt. 12 Foot Slider Door

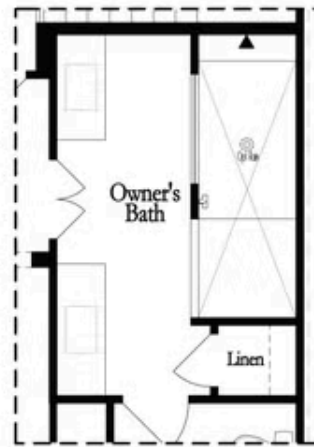
Main Level Options

Want to Know More
About This Home?

CONTACT OUR COMMUNITY SALES MANAGER
Call Us @ 470.248.2097

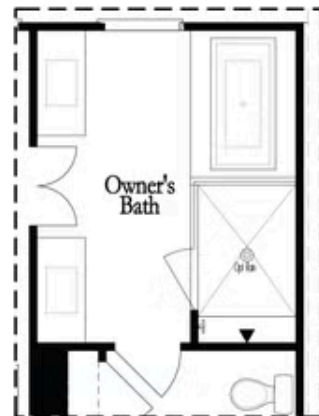


Opt. Shower/Tub



Opt. Walk-Through Shower

Owner's Front - Options



Opt. Shower/Tub



Opt. Walk-Through Shower

Owner's Rear - Options

Want to Know More
About This Home?

CONTACT OUR COMMUNITY SALES MANAGER
Call Us @ 470.248.2097