



PRICED FROM
\$498,900

 1,982 - 2,096 Sq Ft

 3 Beds

 3.5 Baths

 2 Car Garage

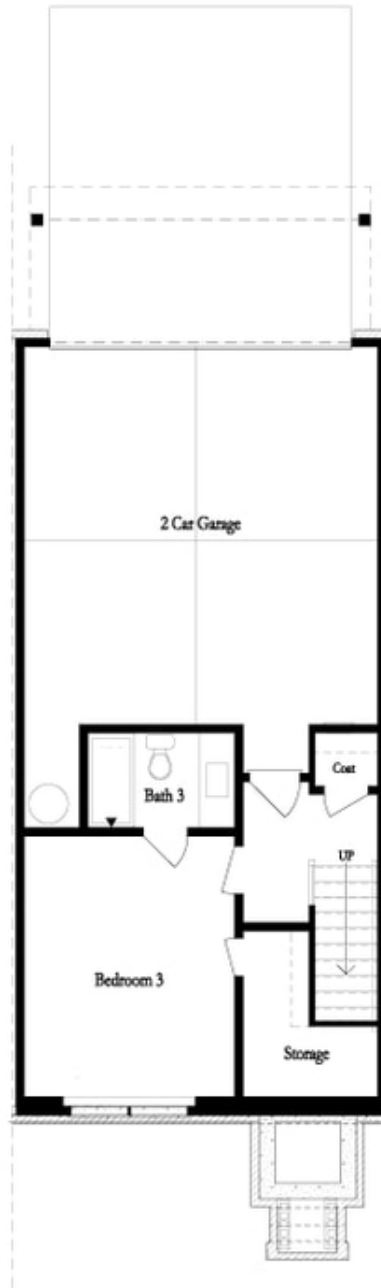
 3.0 Story

- Breakfast Bar on Kitchen Peninsula
- Open Main Level with Kitchen Overlooking Dining Room and Family Room
- Spacious Owner's Suite with Large Walk-In Closet & Vaulted Ceilings in Bath
- Secondary Bedrooms Feature Personal Full Bath
- Private Bedrooms with Guest Suite on Terrace
- 2-Car Garage

[Read More Online](#)

Available Elevations





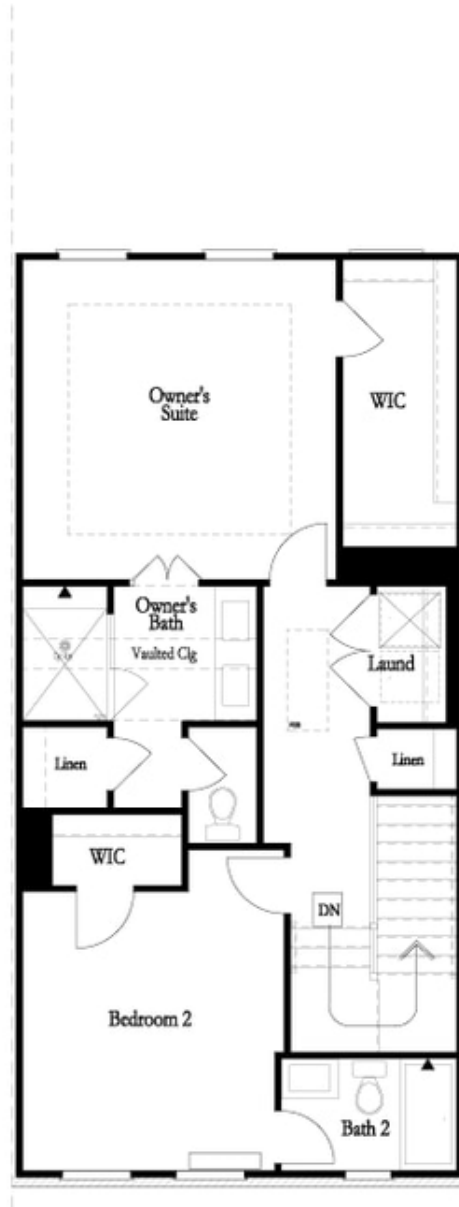
**Want to Know More
About This Home?**

CONTACT OUR COMMUNITY SALES MANAGER
Call Us @ 470.248.2097



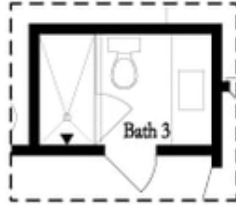
**Want to Know More
About This Home?**

CONTACT OUR COMMUNITY SALES MANAGER
Call Us @ 470.248.2097



**Want to Know More
About This Home?**

CONTACT OUR COMMUNITY SALES MANAGER
Call Us @ 470.248.2097



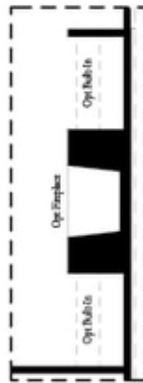
OPT Terrace Shower Only
 into Tub/Shower Combo



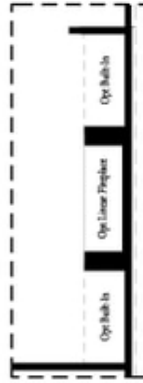
OPT Tub & Shower
 in Owner's Bath



OPT Walk Through Shower
 in Owner's Bath



OPT Fireplace



OPT Linear Fireplace



OPT Sunroom

**Want to Know More
 About This Home?**

CONTACT OUR COMMUNITY SALES MANAGER
 Call Us @ 470.248.2097