



PRICED AT  
**\$492,650**

 1903 Sq Ft

 3 Beds

 3.5 Baths

 2 Car Garage

 3.0 Story

Gated Community \*\*Elevate your life in 2023 with a new home by The Providence Group and \$5,000 towards closing cost when financing with one of Seller's preferred lenders\*\*. This home has a Huge deck for entertaining! The design team has selected the beautiful Cool Linen Package, the finishes have a modern gorgeous look!! The Beauty of this 3 story Glendale plan is that each bedroom has its own bathroom!!!! Your Guest will enter your new home just off the terrace level entry foyer, where you will find a private bedroom and full bath for guests or great as an office! The Main level is the definition of open concept living with gourmet kitchen complete with white cabinets, large island, stainless steel appliances, quartz countertop and tile backsplash. The kitchen is adjacent to the dining room and family room with beautiful fireplace. The Upper level boasts comfortable living in owner's suite with large walk-in closet, owners bath with dual vanities and a Frameless walk in Shower. The secondary bedroom has its own private bath and the laundry room is also upstairs for laundry day convenience. 2 car rear entry garage with garage door openers. This community is in highly desirable location ...

**Want to Know More  
About This Home?**

CONTACT OUR NEW HOME NAVIGATOR

**NONE**

Call Us @ 470-248-2097

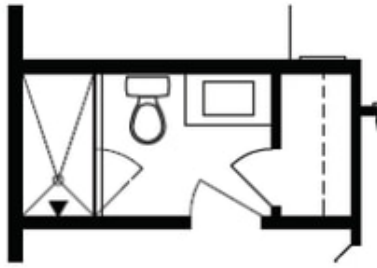


**Want to Know More  
 About This Home?**

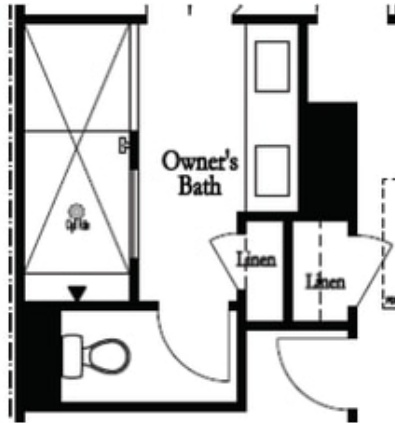
CONTACT OUR NEW HOME NAVIGATOR

**NONE**

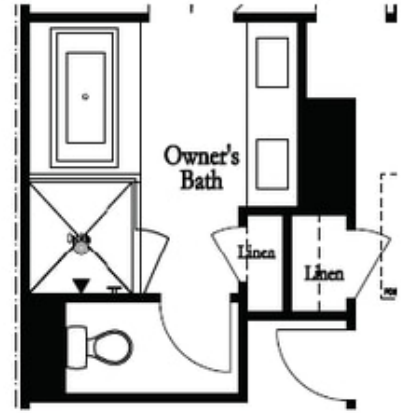
Call Us @ 470-248-2097



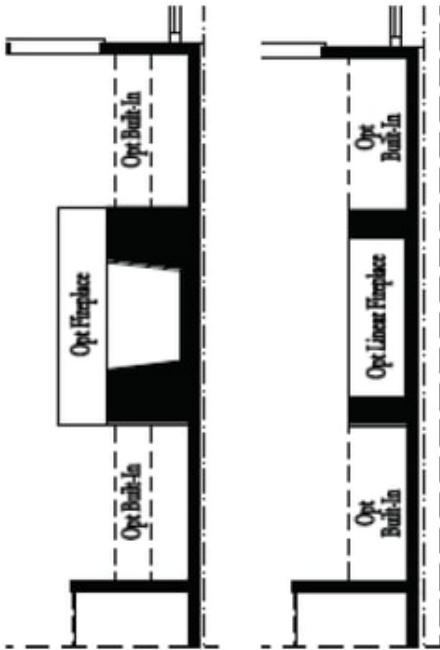
Optional Bath 3 Shower ilo Tub



Optional Owner's Luxury Shower

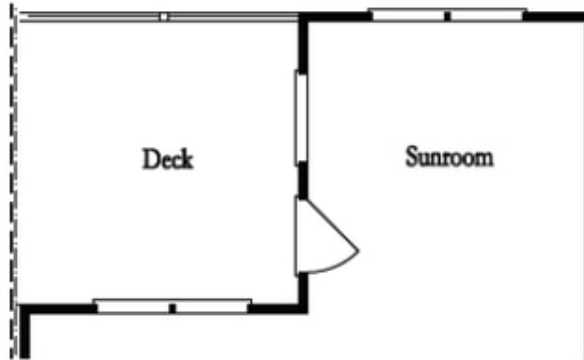


Optional Owner's Shower & Tub

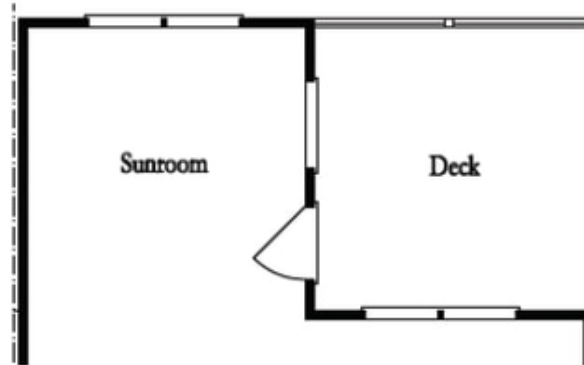


Optional  
 Family Room  
 Fireplace

Optional  
 Family Room  
 Linear Fireplace



Optional Sunroom 1 ilo Extended Deck



Optional Sunroom 2 ilo Extended Deck

**Want to Know More  
 About This Home?**

CONTACT OUR NEW HOME NAVIGATOR

**NONE**

Call Us @ 470-248-2097