



PRICED AT
\$469,150

 1893 Sq Ft

 3 Beds

 3.5 Baths

 2 Car Garage

 3.0 Story

Home is under construction estimated completion is Jan/Feb 2023 2. Ask About our Fabulous Fall Incentives! Location, Location, Location!! Amazing Views with a great open area in front. The Glendale's desirable floor plan offers a private bedroom on the terrace level with a full bath. Your main level has a large kitchen w/island, quartz countertops & view to the fireplace in the family room. On the upper level you will find your primary suite with enlarged tile shower and drying area. Separate laundry room. The secondary bedroom comes with full bath. Our Design team has selected the Cool Slate Collection with beautiful designer finishes. Spend the holidays in your Brand New Home!! This home is in a fantastic location within the community with great views and an open space area in front of the home. This community is in highly desirable location in unincorporated Gwinnett County and close to 3 vibrant cities - downtown Sugar Hill, Suwanee Town Center and Buford!! Incredible amenities will be Pool, Clubhouse, Parks and Green Space coffee bar. Easy Access to interstates, shopping and restaurants. \$15k closing cost incentive with with use of one of the Preferred Lenders - Ameris Bank, Capital City Home Loans, ...

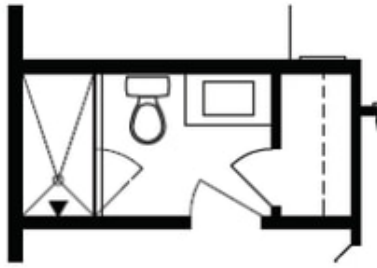
**Want to Know More
About This Home?**

CONTACT OUR NEW HOME NAVIGATOR
Call Us @ 470-248-2097

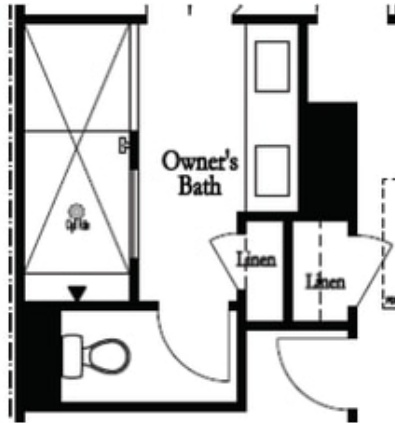


**Want to Know More
 About This Home?**

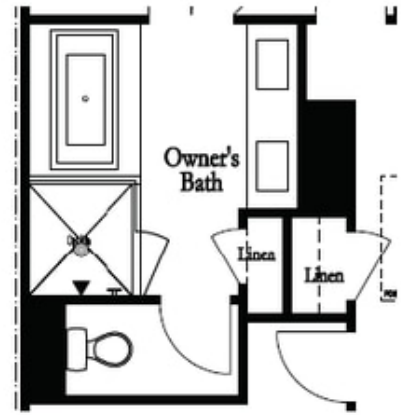
CONTACT OUR NEW HOME NAVIGATOR
 Call Us @ 470-248-2097



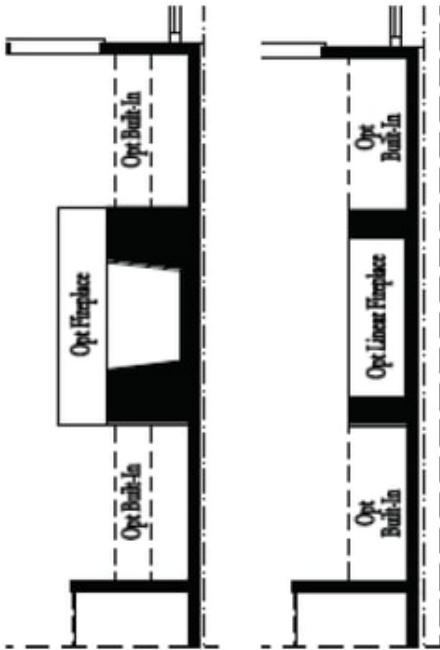
Optional Bath 3 Shower ilo Tub



Optional Owner's Luxury Shower

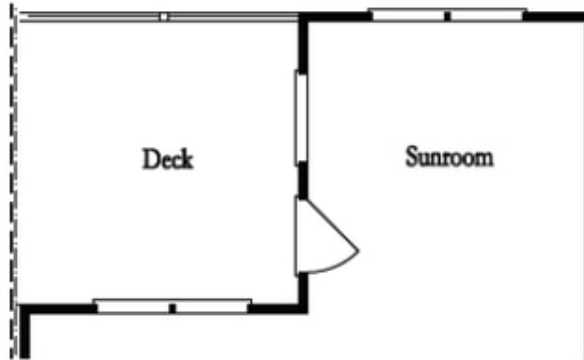


Optional Owner's Shower & Tub

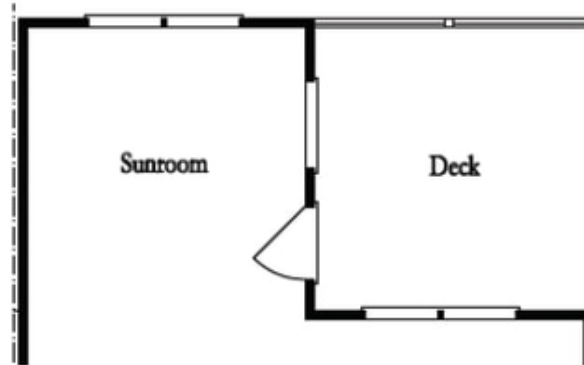


Optional Family Room Fireplace

Optional Family Room Linear Fireplace



Optional Sunroom 1 ilo Extended Deck



Optional Sunroom 2 ilo Extended Deck

**Want to Know More
About This Home?**

CONTACT OUR NEW HOME NAVIGATOR
Call Us @ 470-248-2097