



PRICED AT
\$589,230

 2483 Sq Ft

 4 Beds

 3.0 Baths

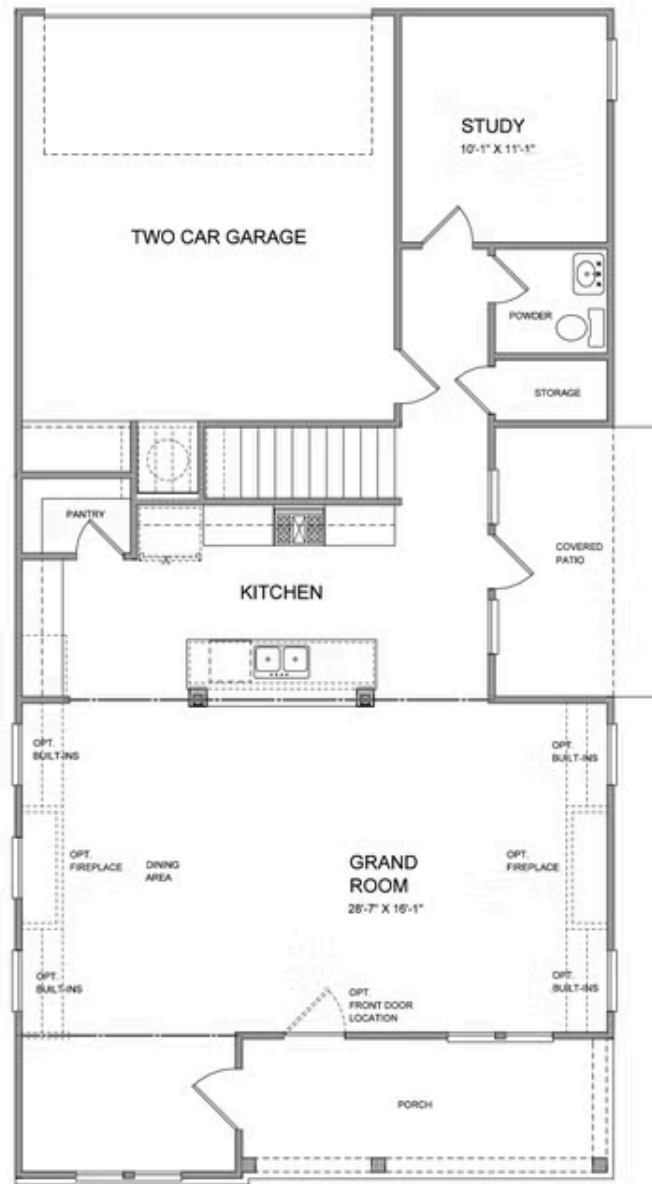
 2 Car Garage

 2.0 Story

Elevate your life in 2023 with a new home by The Providence Group and \$5,000 towards closing cost when financing with one of Seller's 4 preferred lenders. Owens A - New Construction! Courtyard home with covered patio and fantastic location within the community! Beautiful farmhouse style elevation with siding, metal roof on front porch, and brick watertable with rear entry garage. Upon entering the Owens floorplan, you will find 10 ft. Ceilings on the main floor and gorgeous hard surface floors throughout the main living space. The gourmet kitchen features stacked white cabinets around the perimeter and willow gray island. Quartz kitchen countertops, tile backsplash, stainless appliances with double oven and single bowl kitchen sink finish out the design selections in the kitchen. The family room offers a cozy fireplace with quartzite surround and stained box beam mantle. There is a private Guest suite with full bathroom on the main floor. On the 2nd floor, you will find the Huge Owner's Suite which has separate his and hers closets, separate vanities and walk in shower. There is a shared bath for the secondary upstairs bedrooms. Your laundry room is conveniently located between the owners bedroom and the secondary bedrooms. Lots ...

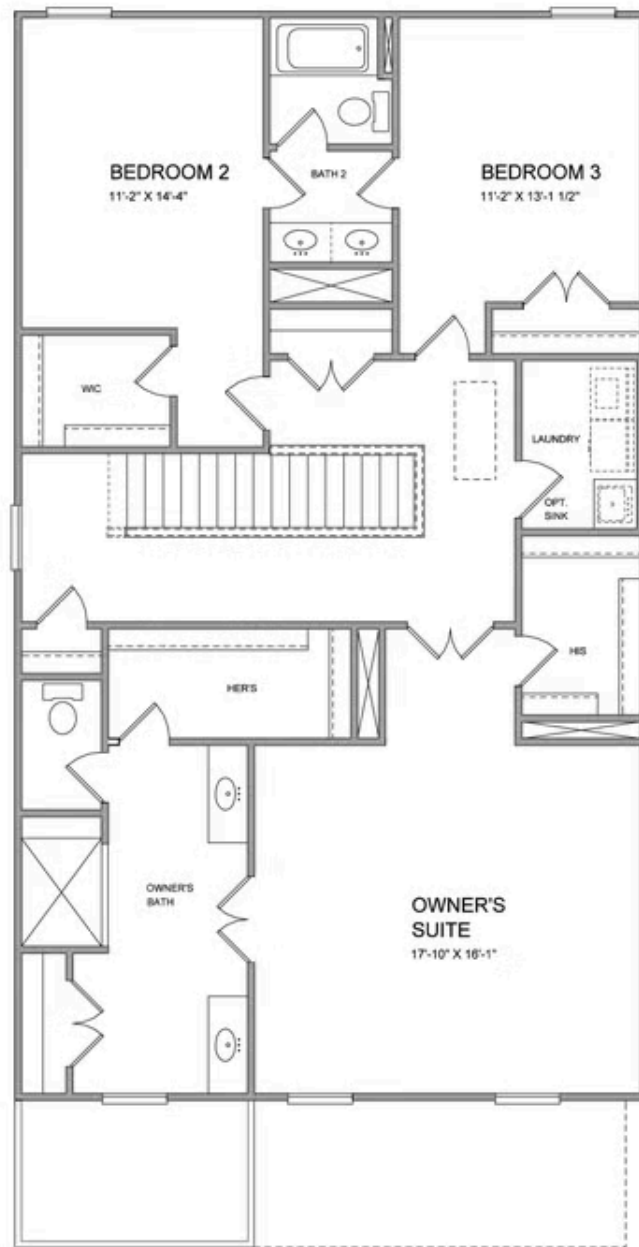
Want to Know More
About This Home?

CONTACT OUR COMMUNITY SALES MANAGER
Call Us @ 470.248.2097



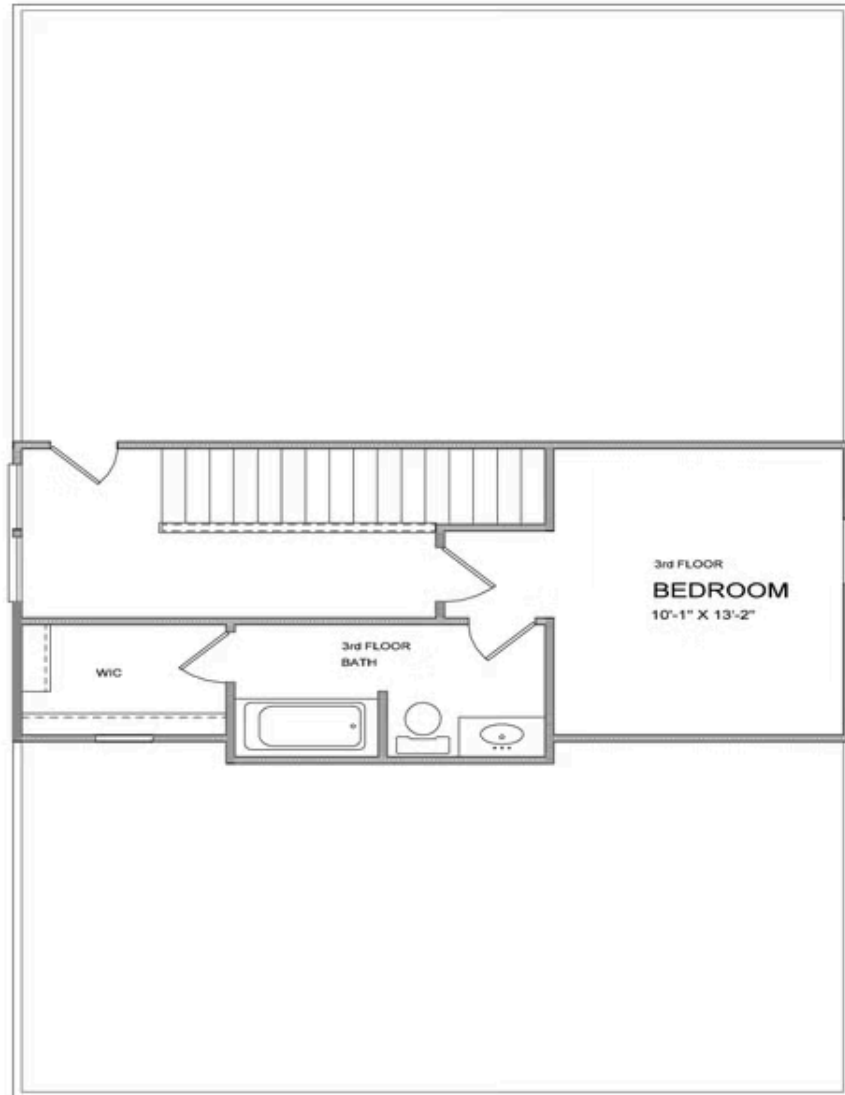
Want to Know More
About This Home?

CONTACT OUR COMMUNITY SALES MANAGER
Call Us @ 470.248.2097



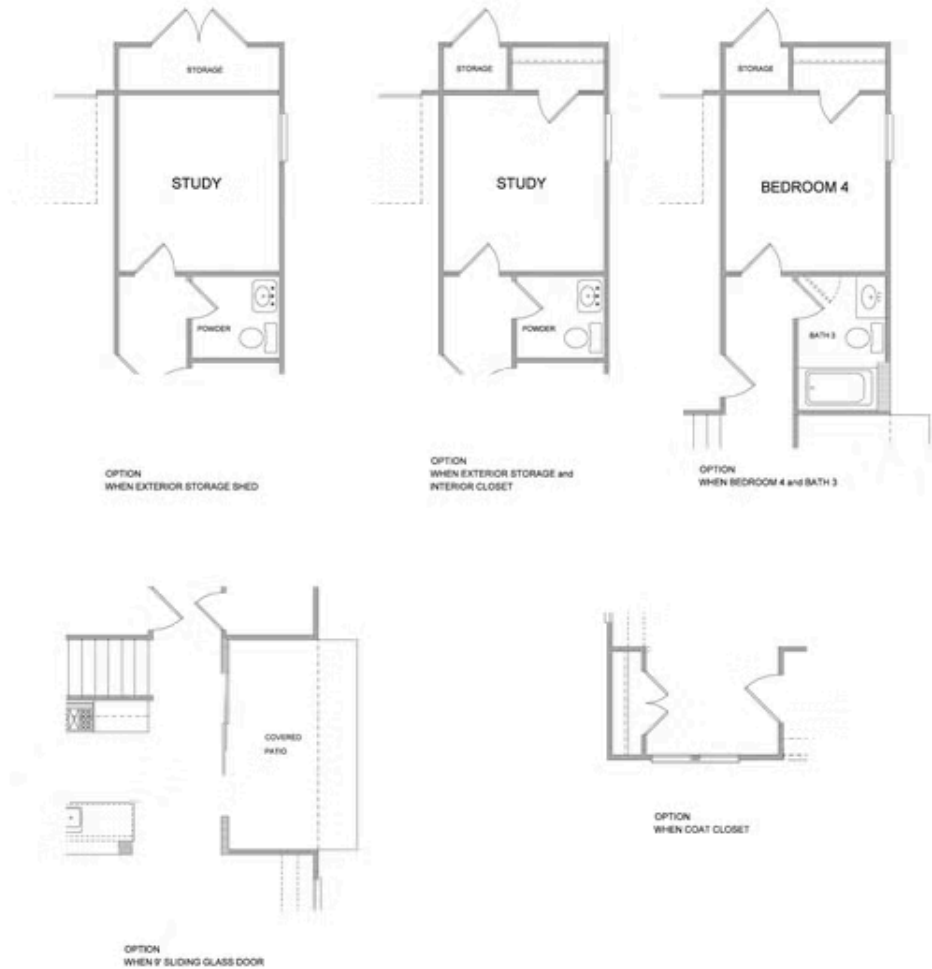
Want to Know More
About This Home?

CONTACT OUR COMMUNITY SALES MANAGER
Call Us @ 470.248.2097



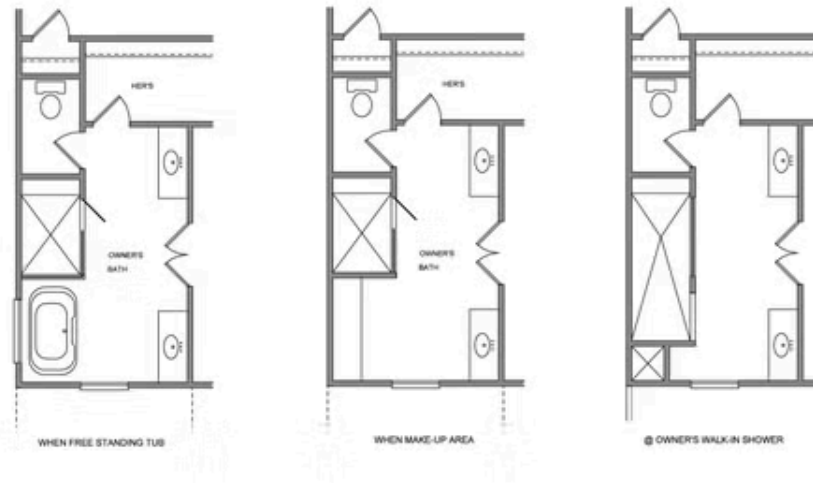
Want to Know More
About This Home?

CONTACT OUR COMMUNITY SALES MANAGER
Call Us @ 470.248.2097



Want to Know More
About This Home?

CONTACT OUR COMMUNITY SALES MANAGER
Call Us @ 470.248.2097



Want to Know More
About This Home?

CONTACT OUR COMMUNITY SALES MANAGER
Call Us @ 470.248.2097