



PRICED AT
\$606,610

 **2479 Sq Ft**

 **4 Beds**

 **3.0 Baths**

 **2 Car Garage**

 **3.0 Story**

Elevate your life in 2023! with a Providence Group built home! Kincaid C - New Construction! Courtyard home with patio AND Private Balcony off of master bedroom! Fantastic location within the community! Beautiful home with cement siding and brick watertable with rear entry garage. Upon entering the Kincaid floorplan, you will find 10 ft. Ceilings on the main floor and gorgeous hard surface floors throughout the main living space. The gourmet kitchen features stacked bright white cabinets around the perimeter and driftwood stained island. Quartz kitchen countertops, tile backsplash, stainless appliances and single bowl kitchen sink finish out the design selections in the kitchen. The family room offers a cozy fireplace with shiplap surround and there is a private Guest suite with full bathroom on the main floor featuring a walk in shower. On the 2nd floor, you will find the Huge Owner's Suite which has a massive walk in closet, separate vanities and walk in shower with drying area. There is a shared bath for the secondary upstairs bedrooms. Your laundry room is conveniently located between the owners bedroom and the secondary bedrooms in the hallway. As a bonus, this floor plan has a loft upstairs! This home is ...

**Want to Know More
About This Home?**

CONTACT OUR COMMUNITY SALES MANAGER
Call Us @ 470.248.2097



Want to Know More
About This Home?

CONTACT OUR COMMUNITY SALES MANAGER
Call Us @ 470.248.2097



Second Floor

Want to Know More
About This Home?

CONTACT OUR COMMUNITY SALES MANAGER
Call Us @ 470.248.2097

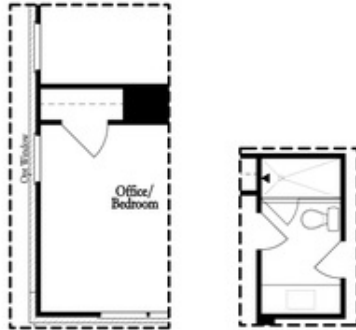


Optional Third Floor

Want to Know More
About This Home?

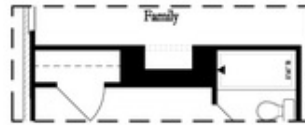
CONTACT OUR COMMUNITY SALES MANAGER
Call Us @ 470.248.2097

Options



Opt Left Side Window @ Office/Bedroom

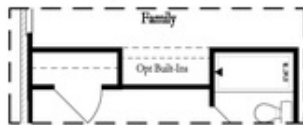
Opt Shower @ Bath 3



Opt Linear Fireplace



Opt Fireplace



Opt Nook

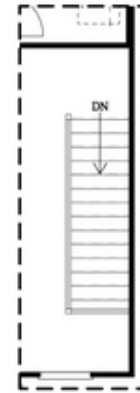


Opt Closet

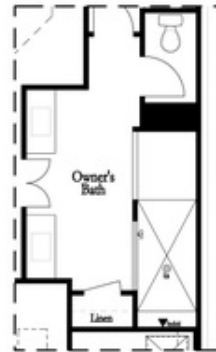
First Floor Options



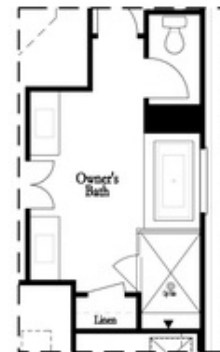
Opt Left Side Window @ Bedroom 3



Opt Open Rail



Opt Walk-Thru Shower



Opt Tub/Shower Combo

Second Floor Options

Want to Know More
About This Home?

CONTACT OUR COMMUNITY SALES MANAGER
Call Us @ 470.248.2097