



PRICED AT
\$630,880

 2236 Sq Ft

 4 Beds

 3.5 Baths

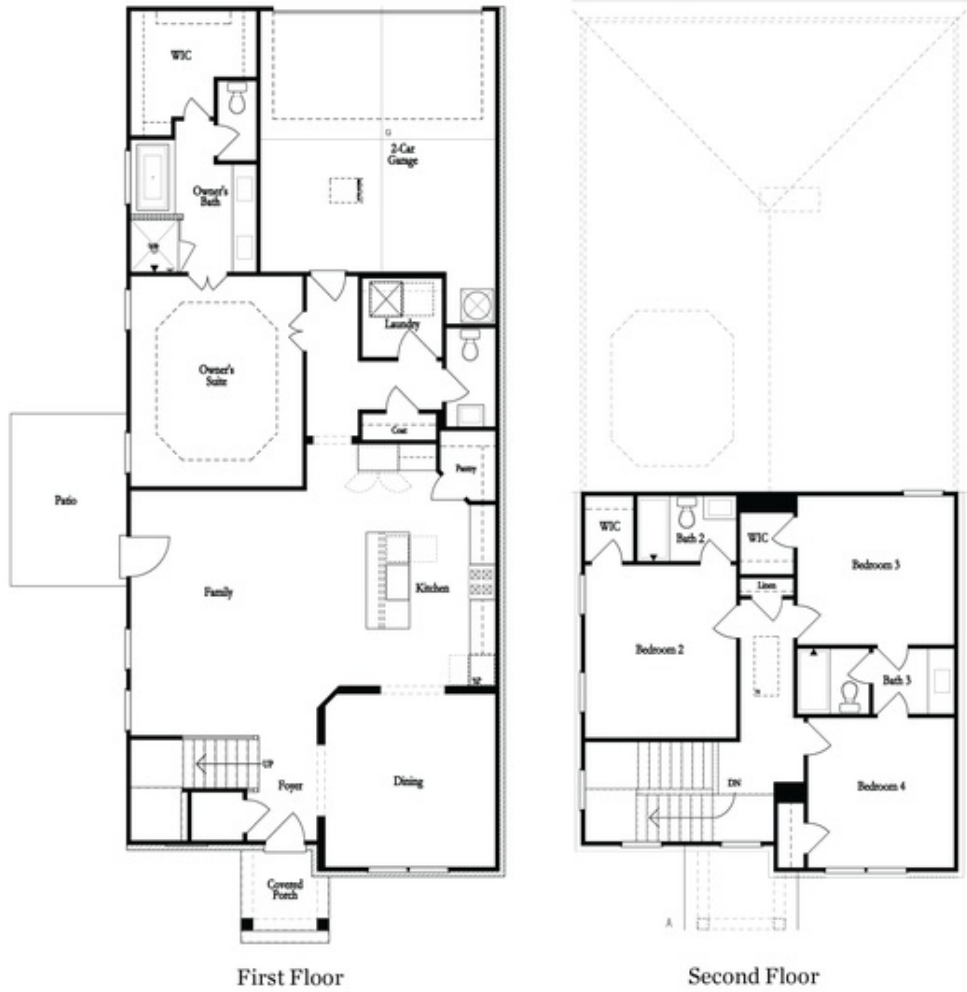
 2 Car Garage

 2.0 Story

New Year, New Home, New You!" *Master on Main Charleston C By The Providence Group - Elevate your Life in 2023 with a New Home by The Providence Group! Highly Sought After MASTER ON MAIN! 4 bedroom, 3.5 bath, 2 story, NEW Construction, Wow! Brand New! The first floor offers 10ft. Ceilings, owners suite with a HUGE Walk in shower in the Owner's bathroom, dual vanities, walk in closet, and easy access to the laundry room and powder room. The fabulous layout of the kitchen features Quartz countertops, double oven, single bowl sink and a large island overlooking the family room with cozy fireplace. This home also features a separate dining room to enjoy with family. The 2nd floor has 9ft ceilings with 3 additional bedrooms and 2 baths. BONUS -there is an Outdoor Storage Shed - attached to home for your seasonal items, bikes and toys. Side patio with courtyard comes fenced and is a great area to enjoy outside. And that's not all - the location of this home within the community cannot be beat, this home will face our big pocket park which has not one but two fire pits, plus easy access to your mailbox. Home ...**

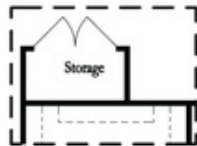
Want to Know More
About This Home?

CONTACT OUR COMMUNITY SALES MANAGER
Call Us @ 470.248.2097

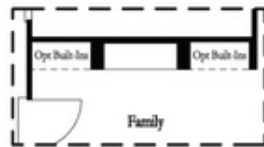


Want to Know More
About This Home?

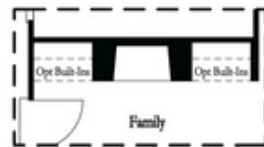
CONTACT OUR COMMUNITY SALES MANAGER
Call Us @ 470.248.2097



Optional Storage Room

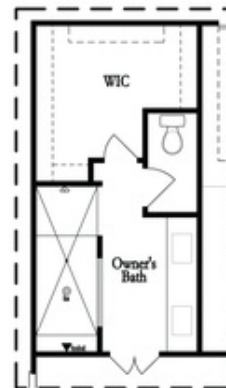


Optional Linear Fireplace



Optional Direct Vent Fireplace

First Floor Options



Optional Walk-Thru Shower

Second Floor Options

Want to Know More
 About This Home?

CONTACT OUR COMMUNITY SALES MANAGER
 Call Us @ 470.248.2097