



PRICED AT
\$895,345

 3472 Sq Ft

 5 Beds

 4.0 Baths

 2 Car Garage

 2.0 Story

Montgomery B - By The Providence Group - 2 Story Home on unfinished BASEMENT featuring a gorgeous mixed material elevation with brick, stone, siding and shakes. This 5 bedroom/4 bath home has 10 ft. Ceilings on the main floor and features a guest bedroom/office with full bathroom, cozy fireplace, awesome kitchen, and separate dining room with view to family room! The beautifully designed kitchen overlooks the family room featuring Quartz countertops, single bowl sink and double oven making cooking a breeze. If you get tired of cooking, take a break on the COVERED DECK to relax. The separate dining room will also be fantastic for the holiday get togethers. On the 2nd floor you will find 9' ceilings, a bedroom with its own private bathroom, plus 2 other bedrooms that have a Jack and Jill bathroom, a Laundry room with cabinets and sink. The master bedroom and bathroom is AMAZING! The master bathroom has separate His/Hers vanities, a soaking tub plus a shower! In addition, this home also has an unfinished basement with tons of possibilities! This home will be absolutely gorgeous! Tons of interior Design upgrades! Great home to make yours today! Community offers swim/pavilion, fitness center, and firepit. ...

**Want to Know More
About This Home?**

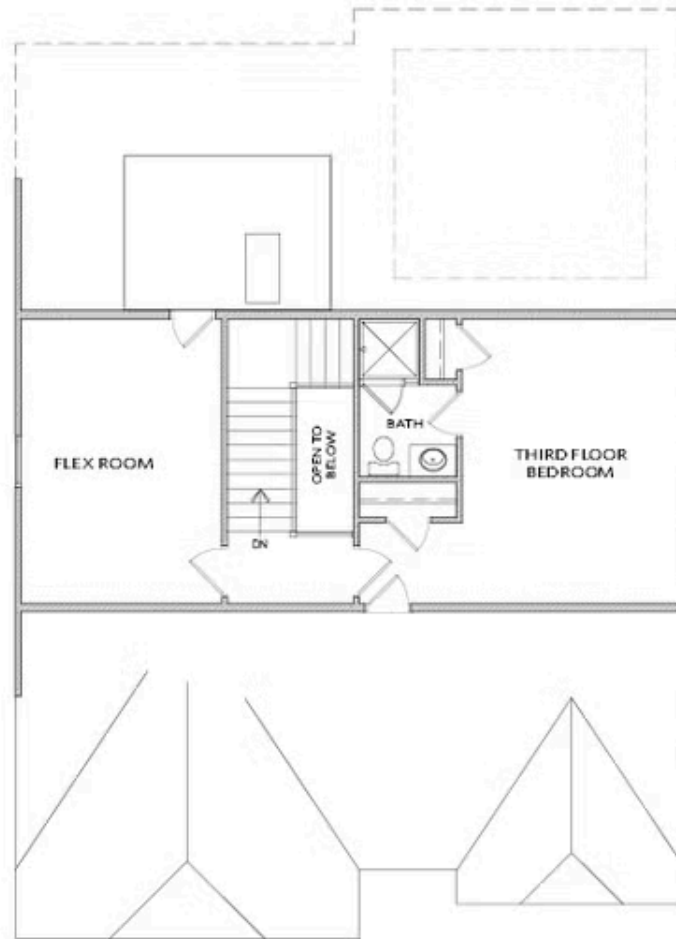
CONTACT OUR COMMUNITY SALES MANAGER
Call Us @ 470.248.2097



Elevation A & B

Want to Know More
About This Home?

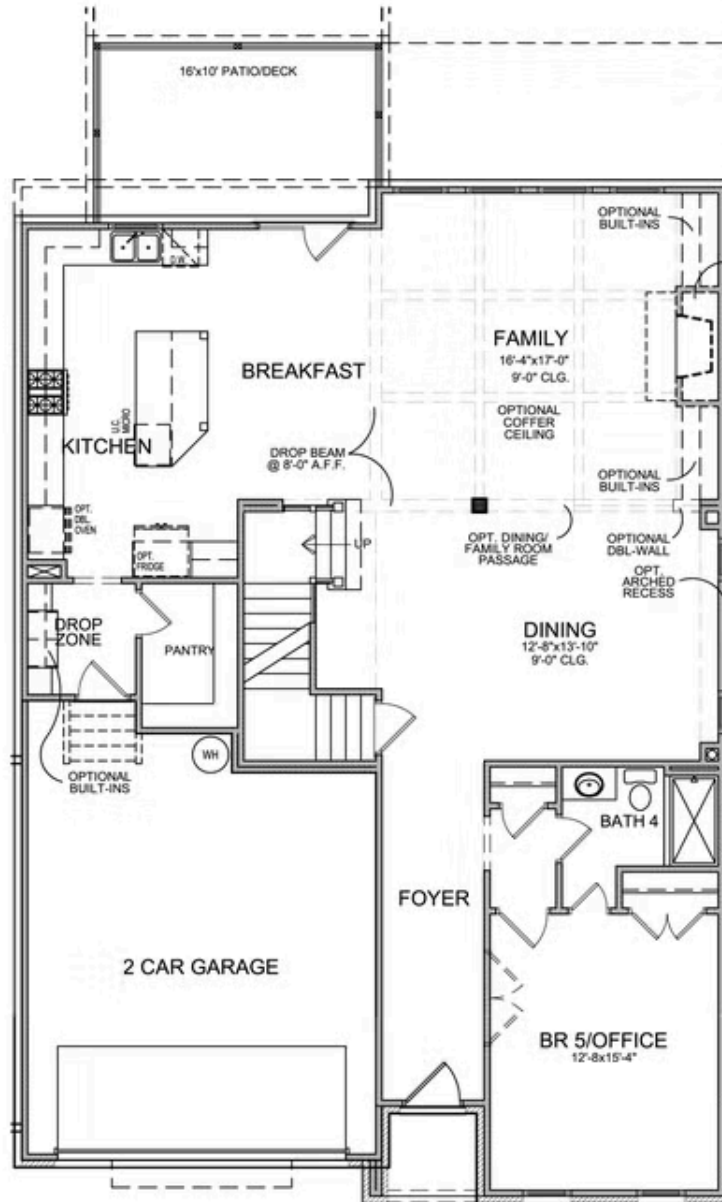
CONTACT OUR COMMUNITY SALES MANAGER
Call Us @ 470.248.2097



*ONLY Available on a Slab Home

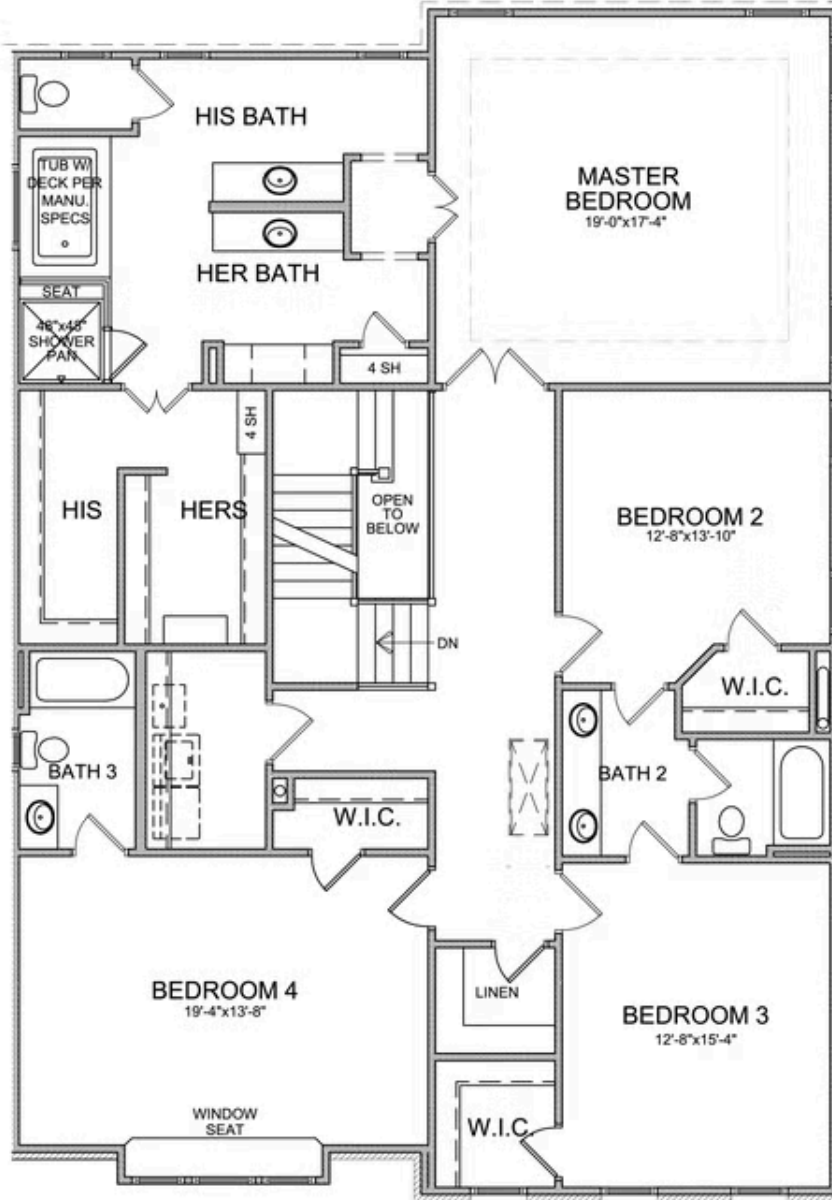
Want to Know More
About This Home?

CONTACT OUR COMMUNITY SALES MANAGER
Call Us @ 470.248.2097



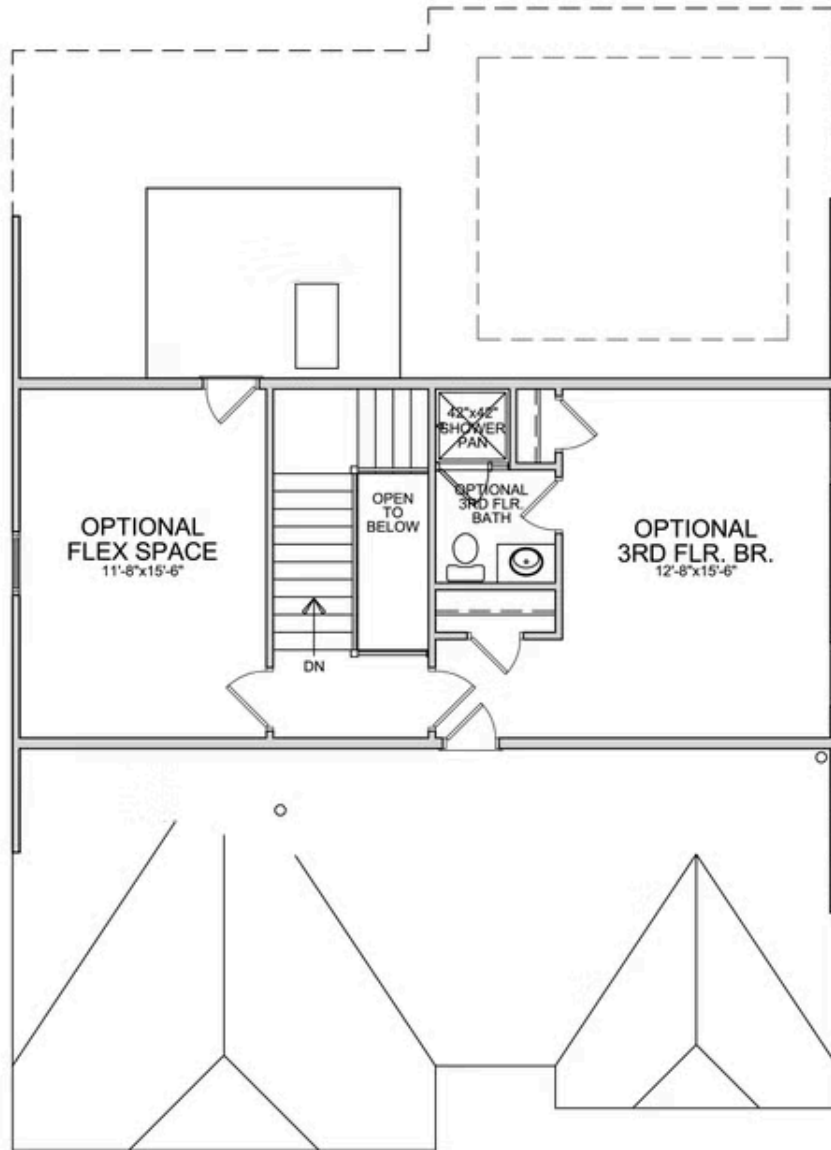
Want to Know More
 About This Home?

CONTACT OUR COMMUNITY SALES MANAGER
 Call Us @ 470.248.2097



Want to Know More
About This Home?

CONTACT OUR COMMUNITY SALES MANAGER
Call Us @ 470.248.2097



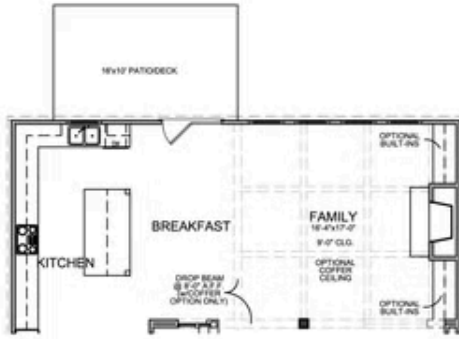
OPT Third Floor

*Third Floor NOT available on Elevations B and E

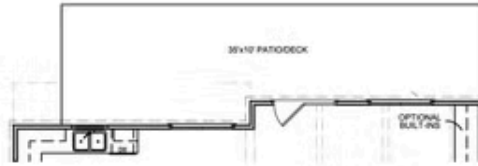
Want to Know More
About This Home?

CONTACT OUR COMMUNITY SALES MANAGER
Call Us @ 470.248.2097

Optional Layouts



OPT Extended Kitchen



OPT Extended Porch & Awning

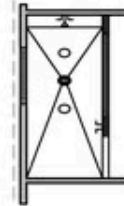


OPT Covered Porch



OPT Sunroom -&- OPT Patio/Deck

OPT Fireplace on Sunroom



OPT Owner's Walk-In Shower

Want to Know More
 About This Home?

CONTACT OUR COMMUNITY SALES MANAGER
 Call Us @ 470.248.2097