



PRICED AT
\$805,280

 2856 Sq Ft

 5 Beds

 4.0 Baths

 2 Car Garage

 2.0 Story

Spring into a New Home with \$5,000 towards closing cost when financing with one of Seller's preferred lenders. Bennett B- By The Providence Group with brick front elevation. The fabulous Bennett floor plan has a study on the main floor with double French doors perfect for a home office. In addition to this open floorplan, there is a guest retreat with full bathroom & a SUNROOM! The kitchen is the central location for entertaining on the main floor & is open to the family room, dining and sunroom. The kitchen will feature Quartz countertops, and single bowl sink. The main floor has 10ft. ceilings and 9 ft. on the 2nd floor. The Loft upstairs is perfect for gaming, another tv area or a second office! There are 3 additional bedrooms upstairs and 2 bathrooms not including the master bedroom and bath, which makes this home a whopping 5 bdrm 4 bath on unfinished basement! The owners bath has a dual vanity with quartz counters & a separate soaking tub and walk in shower. Lots of Interior Design Upgrades! This home is what open concept and family is all about! Hang out and enjoy friends and family! Keep in mind this ...

Want to Know More
About This Home?

CONTACT OUR COMMUNITY SALES MANAGER
Call Us @ 470.248.2097



Want to Know More
About This Home?

CONTACT OUR COMMUNITY SALES MANAGER
Call Us @ 470.248.2097



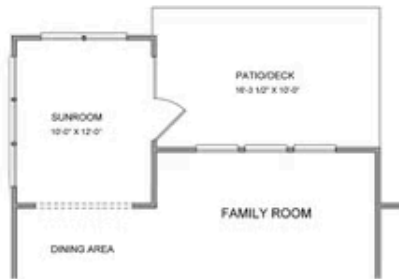
Want to Know More
About This Home?

CONTACT OUR COMMUNITY SALES MANAGER
Call Us @ 470.248.2097

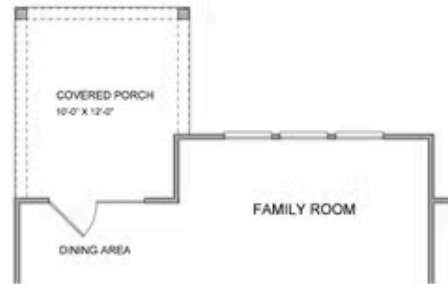


**Want to Know More
About This Home?**

CONTACT OUR COMMUNITY SALES MANAGER
Call Us @ 470.248.2097



Opt. Sunroom



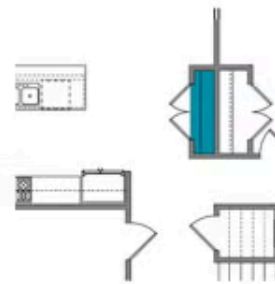
Opt. Covered Porch



Opt. Fireplace



Opt. Rear Fireplace



Opt. Pantry

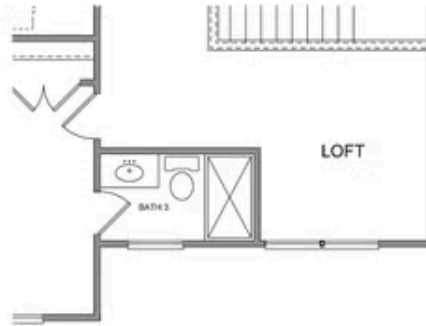
Want to Know More
About This Home?

CONTACT OUR COMMUNITY SALES MANAGER
Call Us @ 470.248.2097



**Want to Know More
About This Home?**

CONTACT OUR COMMUNITY SALES MANAGER
Call Us @ 470.248.2097



Opt. 3rd Bath



Opt. Owner's Sitting Room

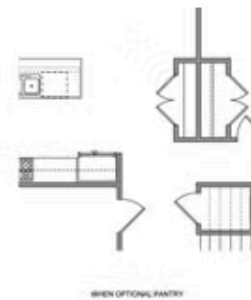
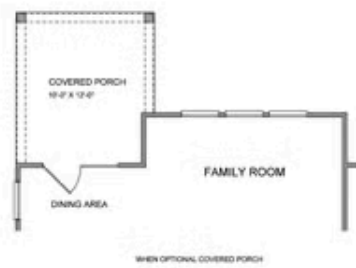
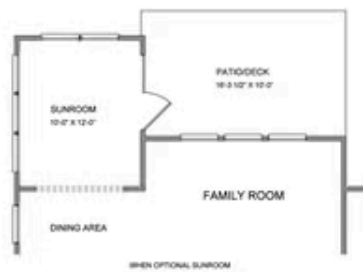


Opt. Owner's Walk-in Shower

Want to Know More
About This Home?

CONTACT OUR COMMUNITY SALES MANAGER
Call Us @ 470.248.2097

Optional Layouts First Floor



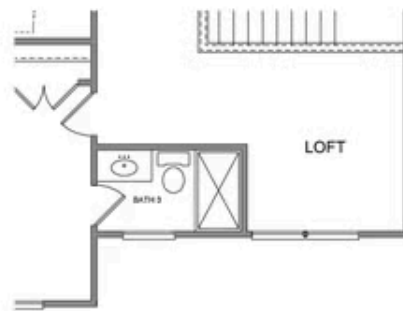
Want to Know More
About This Home?

CONTACT OUR COMMUNITY SALES MANAGER
Call Us @ 470.248.2097

Optional Layouts Second Floor

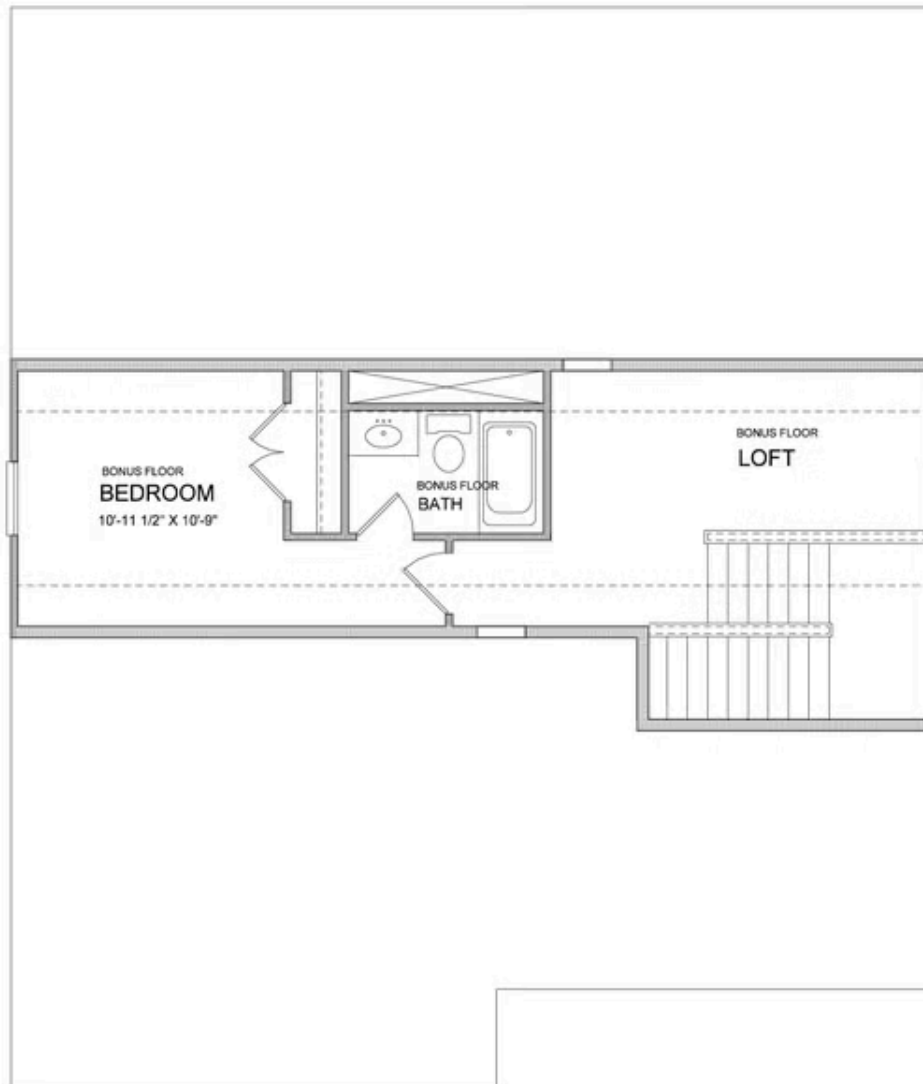


WHEN OPTIONAL OWNER'S WALK-IN SHOWER



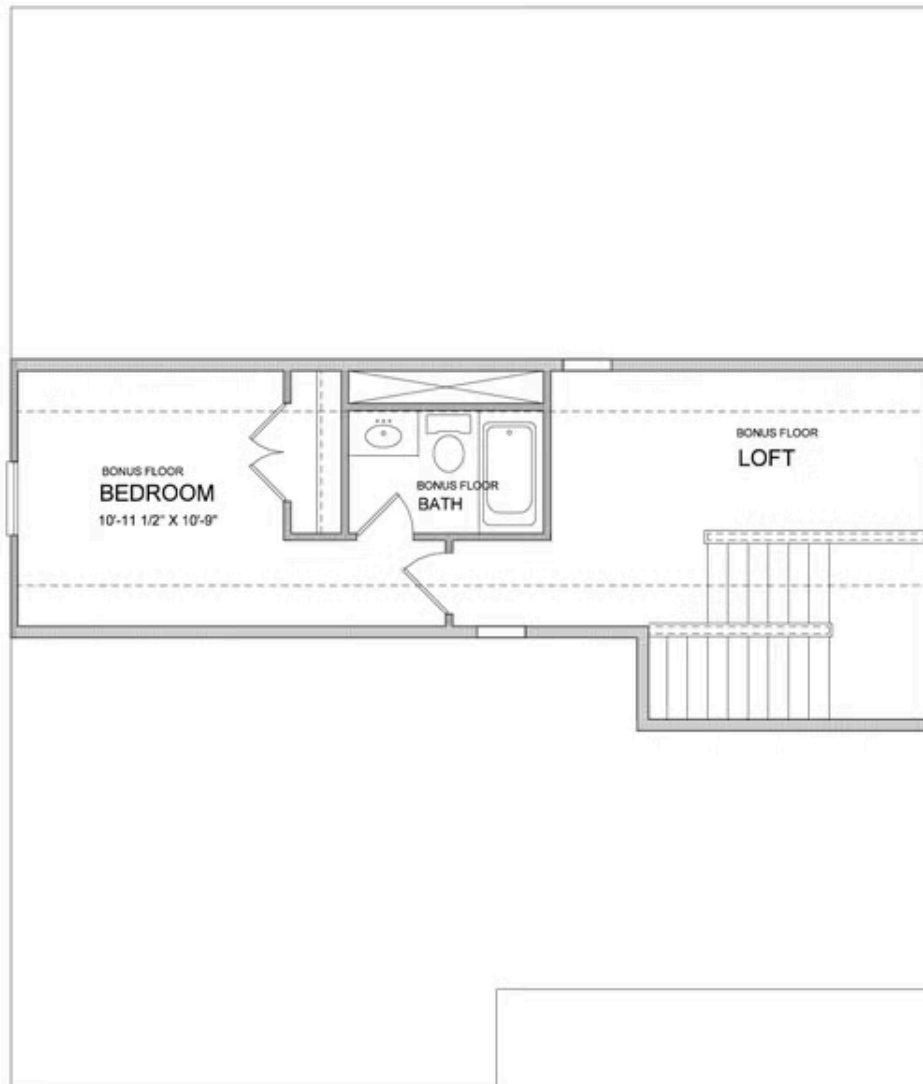
Want to Know More
About This Home?

CONTACT OUR COMMUNITY SALES MANAGER
Call Us @ 470.248.2097



Want to Know More
About This Home?

CONTACT OUR COMMUNITY SALES MANAGER
Call Us @ 470.248.2097



Want to Know More
About This Home?

CONTACT OUR COMMUNITY SALES MANAGER
Call Us @ 470.248.2097