



PRICED AT
\$772,870

 3671 Sq Ft

 4 Beds

 4.0 Baths

 2 Car Garage

 2.0 Story

Montgomery A - Elevate Your Life in 2023! By The Providence Group with a brand new home! Very desirable floor plan! 2 Story Home featuring 4 bedrooms and 4 bathrooms! This popular floor plan has 10 ft. Ceilings on the main floor and features an office with full bathroom, cozy fireplace, extended kitchen, and separate dining room with view to family room! The beautifully designed kitchen layout will feature a single bowl sink and double oven making cooking a breeze. The dining room will be fantastic for the brand new year get togethers. On the 2nd floor you will find 9' ceilings, a bedroom with its own private bathroom, plus 2 other bedrooms that have a Jack and Jill bathroom, a Laundry room. The master bedroom and bathroom is amazing! The master bathroom has separate His/Hers vanities, a soaking tub plus a shower! This home will be absolutely gorgeous! Great home to make yours today! Community offers swim/clubhouse, fitness center, and a firepit. Master Planned Community with you in mind! Home is under construction and estimated to be completed in May/June 2023, Pictures represent a previously built home by The Providence Group, not the actual home since it is UNDER ...

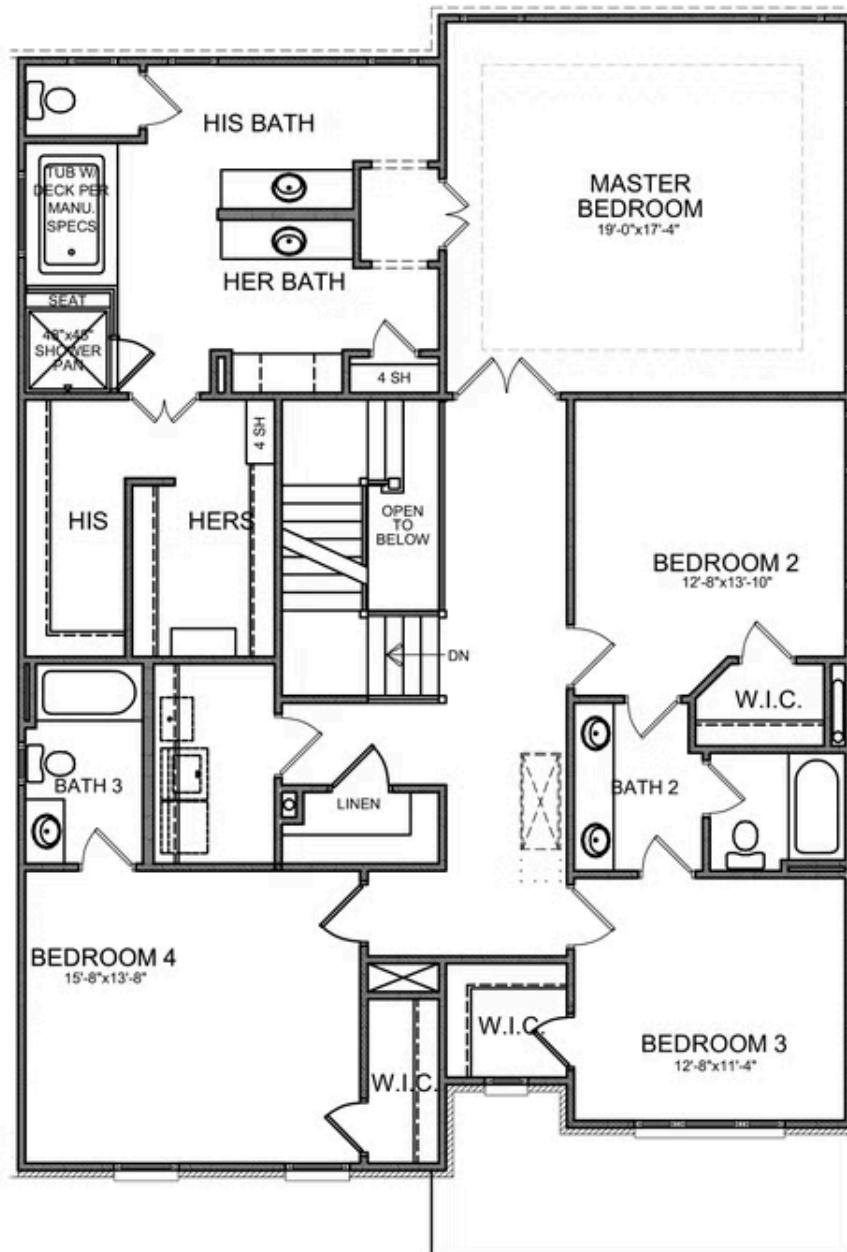
**Want to Know More
About This Home?**

CONTACT OUR COMMUNITY SALES MANAGER
Call Us @ 470.248.2097



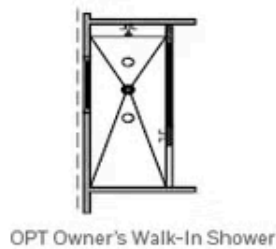
Want to Know More
About This Home?

CONTACT OUR COMMUNITY SALES MANAGER
Call Us @ 470.248.2097



Want to Know More
About This Home?

CONTACT OUR COMMUNITY SALES MANAGER
Call Us @ 470.248.2097

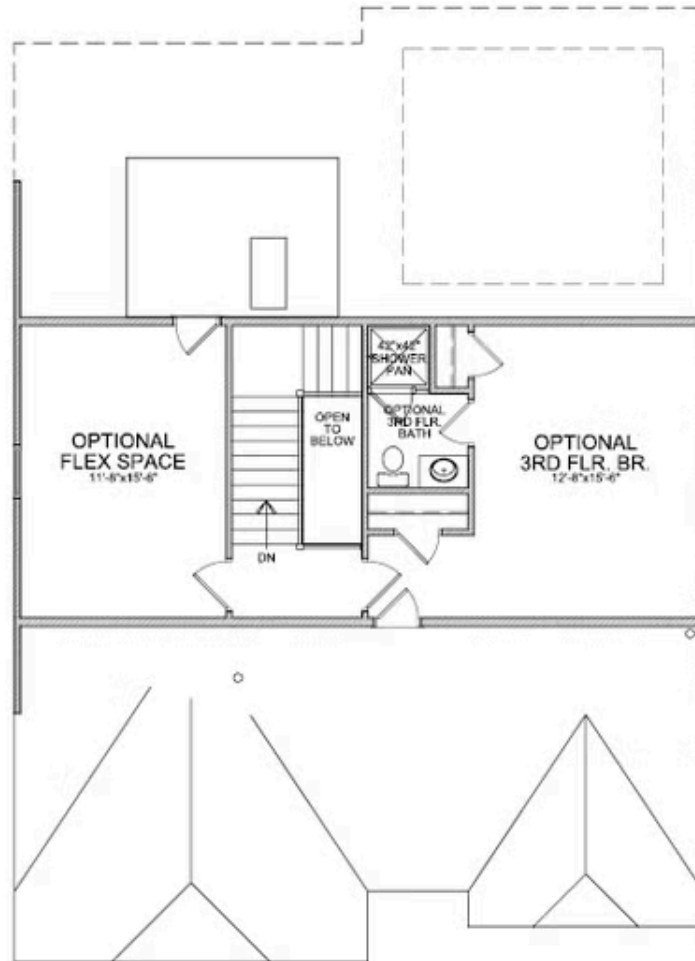


OPT Fireplace on Sunroom

OPTIONS

Want to Know More
About This Home?

CONTACT OUR COMMUNITY SALES MANAGER
Call Us @ 470.248.2097



OPT Third Floor

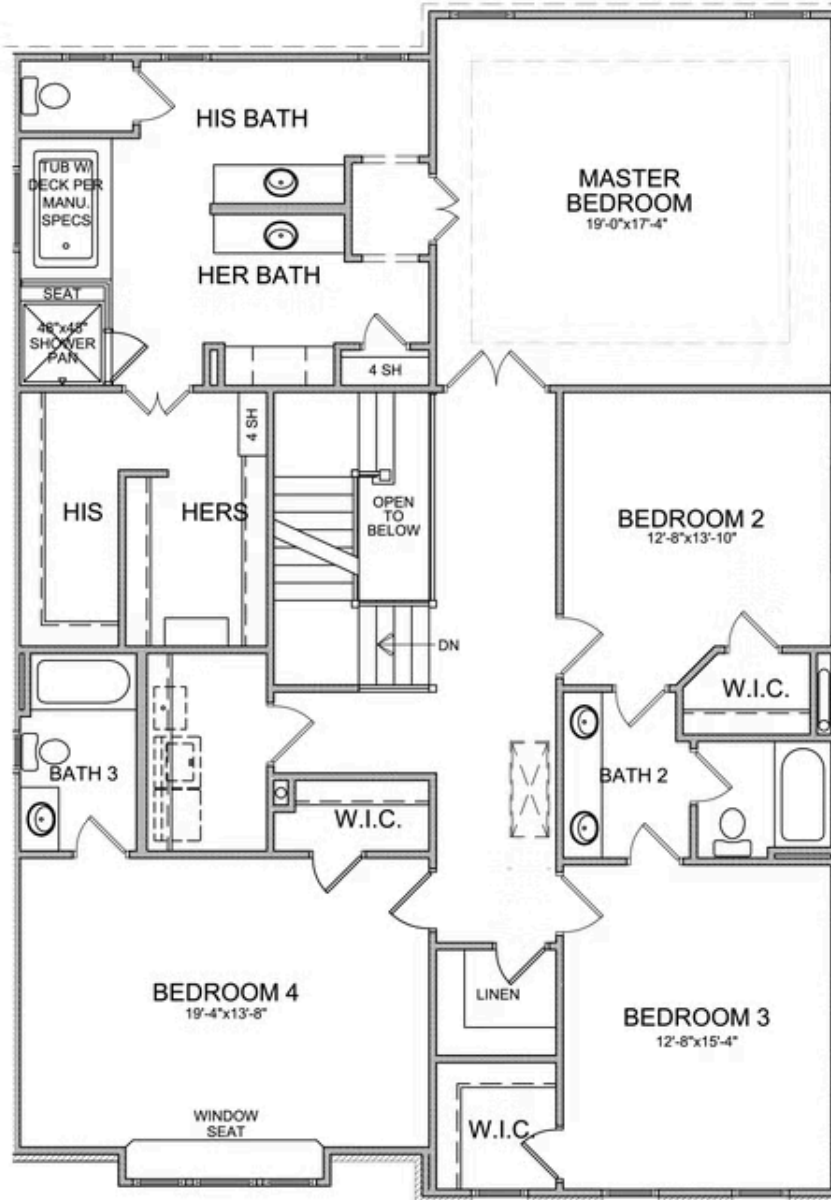
*Third Floor NOT available on Elevations B & E

Want to Know More
About This Home?

CONTACT OUR COMMUNITY SALES MANAGER
Call Us @ 470.248.2097

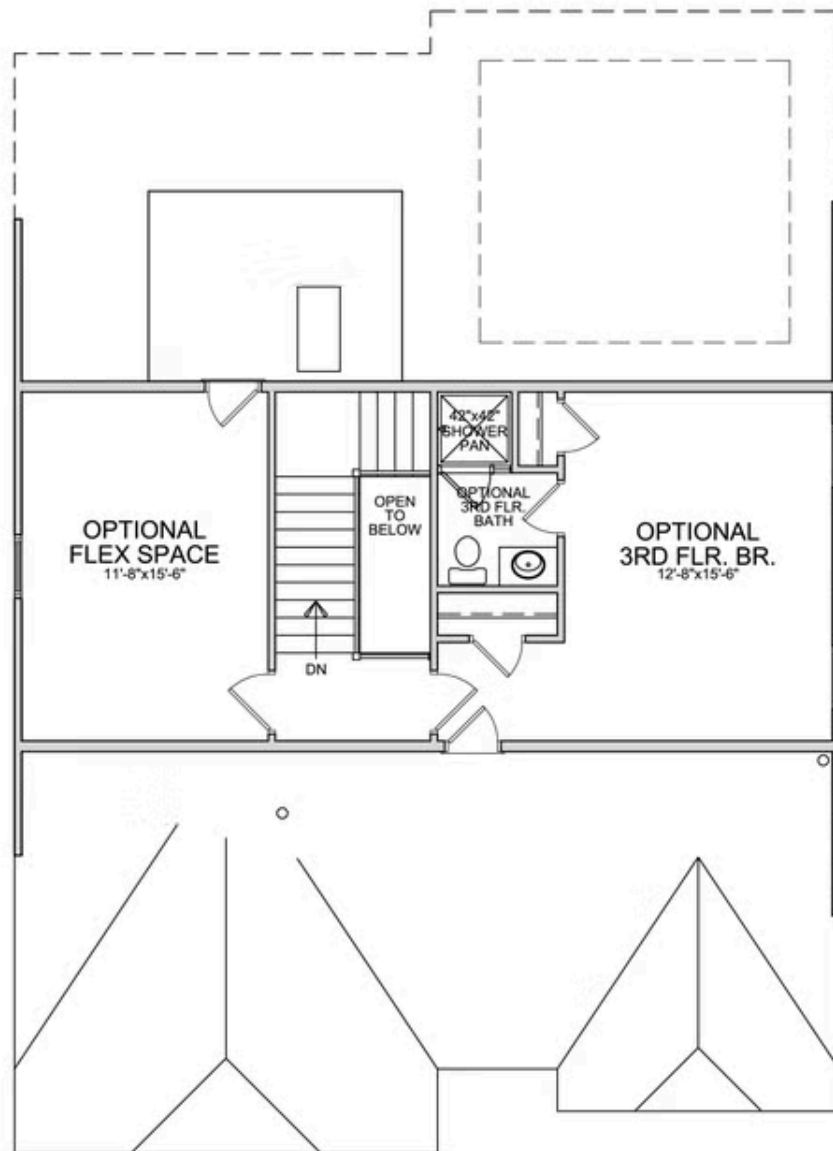


EQUAL HOUSING
OPPORTUNITY



Want to Know More
About This Home?

CONTACT OUR COMMUNITY SALES MANAGER
Call Us @ 470.248.2097



OPT Third Floor

*Third Floor NOT available on Elevations B and E

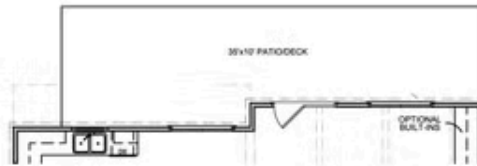
Want to Know More
About This Home?

CONTACT OUR COMMUNITY SALES MANAGER
Call Us @ 470.248.2097

Optional Layouts



OPT Extended Kitchen



OPT Extended Porch & Awning

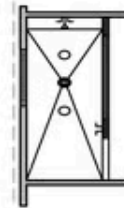


OPT Covered Porch



OPT Sunroom -&- OPT Patio/Deck

OPT Fireplace on Sunroom



OPT Owner's Walk-In Shower

Want to Know More
About This Home?

CONTACT OUR COMMUNITY SALES MANAGER
Call Us @ 470.248.2097