



PRICED AT
\$604,615

 2530 Sq Ft

 4 Beds

 3.0 Baths

 2 Car Garage

 3.0 Story

Kincaid C - By The Providence Group - New Construction by The Providence Group in Buford/Sugar Hill! Close to 3 vibrant downtown areas including Suwanee, Buford, and Sugar Hill! Courtyard home with patio and deck! The Kincaid floorplan offers a guest bedroom/office with full bath/walk in shower on the main floor and 10 ft. Ceilings. 9 ft ceilings on the 2nd floor where you will find a Huge Owner's Suite with master bathroom, your own private deck for coffee sipping, big master closet, separate vanities and walk in shower. The secondary bedrooms have a Jack and Jill bath layout. The Loft upstairs could be for gaming, office or another family room. Kitchen has white cabinets, Quartz countertops, and single bowl sink. The Family room offers a warm fireplace decorated with shiplap all while enjoying an open concept. Lots of interior upgrades! Great home to make yours today and relax for the holidays! Community offers swim/clubhouse, fitness center, and firepits. Master Planned Community with you in mind! Home is under construction and estimated to be completed in Jan/Feb 2023, Pictures represent a previously built home by The Providence Group, not the actual home since it is under construction

**Want to Know More
About This Home?**

CONTACT OUR COMMUNITY SALES MANAGER
Call Us @ 470.248.2097



Want to Know More
About This Home?

CONTACT OUR COMMUNITY SALES MANAGER
Call Us @ 470.248.2097



Second Floor

Want to Know More
About This Home?

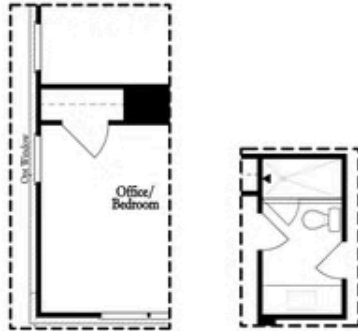
CONTACT OUR COMMUNITY SALES MANAGER
Call Us @ 470.248.2097



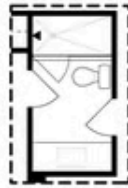
Optional Third Floor

Want to Know More
About This Home?

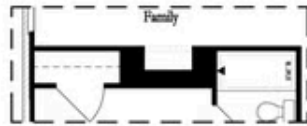
CONTACT OUR COMMUNITY SALES MANAGER
Call Us @ 470.248.2097



Opt Left Side Window
@ Office/Bedroom



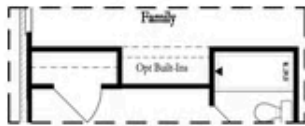
Opt Shower
@ Bath 3



Opt Linear Fireplace



Opt Fireplace



Opt Nook



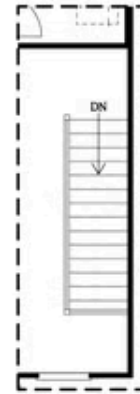
Opt Closet

First Floor Options

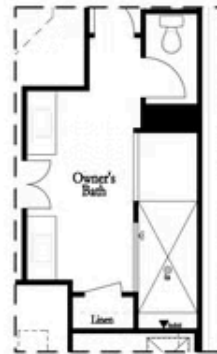
Options



Opt Left Side Window
@ Bedroom 3



Opt Open Rail



Opt Walk-Thru Shower



Opt Tub/Shower Combo

Second Floor Options

Want to Know More
About This Home?

CONTACT OUR COMMUNITY SALES MANAGER
Call Us @ 470.248.2097