



PRICED AT
\$718,275

 3083 Sq Ft

 4 Beds

 4.0 Baths

 2 Car Garage

 3.0 Story

Calhoun A - By The Providence Group - Elevate Your Life in 2023! The main floor features 10' ceilings, a guest bedroom with full bathroom, Open concept, cozy fireplace, and dining room. The gourmet kitchen has stacked cabinets, Quartz countertops, single bowl sink, breakfast area & separate dining rm will make entertaining easy for the holiday season. Cooking is a breeze with the double oven! The Family room offers a warm fireplace for the cold weather coming! With 9 ft ceilings on the 2nd floor, you will find a bedroom with its own private bathroom, plus another bedroom and bathroom! In addition to this there is also a FANTASTIC Media room for movies! The master bedroom has separate his and hers closets, which I personally LOVE! The master bathroom has a tub plus a shower! Laundry room on the 2nd floor will have upper and lower cabinets and a convenient sink for pre-wash! Lots of interior upgrades! Great home to make yours today! Close to 3 vibrant downtown areas including Suwanee, Buford, and Sugar Hill! Community offers swim/clubhouse, fitness center, and firepits. Master Planned Community with you in mind! Home is under construction and estimated to be completed in Jan/2023, ...

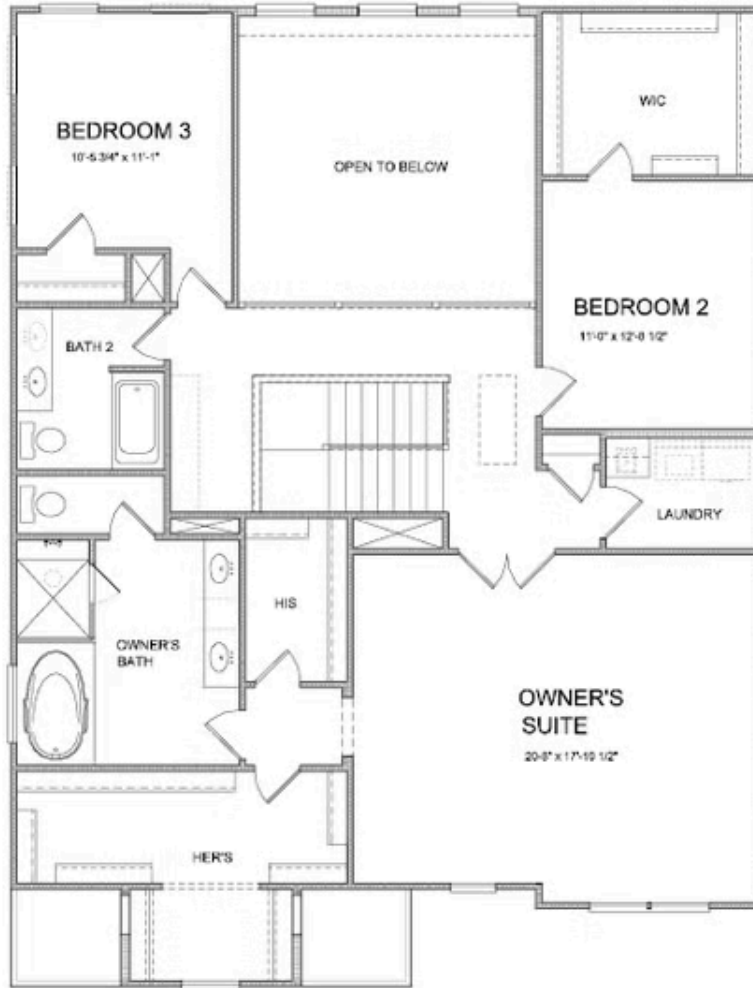
**Want to Know More
About This Home?**

CONTACT OUR COMMUNITY SALES MANAGER
Call Us @ 470.248.2097



Want to Know More
About This Home?

CONTACT OUR COMMUNITY SALES MANAGER
Call Us @ 470.248.2097



Want to Know More
About This Home?

CONTACT OUR COMMUNITY SALES MANAGER
Call Us @ 470.248.2097



Want to Know More
About This Home?

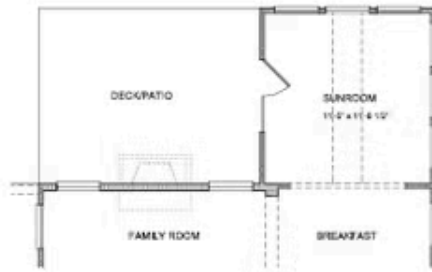
CONTACT OUR COMMUNITY SALES MANAGER
Call Us @ 470.248.2097



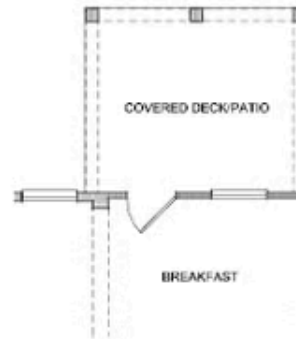
Opt. Coffered Ceilings
 w/ Opt. Media Room or Bedroom 5 above



Opt. Bedroom 4 w/ Full Bath
 No Study & Power Room



Opt. Sunroom



Opt. Covered Deck/Patio

Want to Know More
 About This Home?

CONTACT OUR COMMUNITY SALES MANAGER
 Call Us @ 470.248.2097



Opt. Full Bath 3
 on Bedroom 2



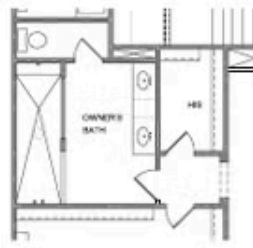
Opt. In-Law Suite on
 Bedroom 3



Opt. Bedroom 5
 ï¿½ Open Ceiling on Family Room



Opt. Bedroom 5 w/ Full Bath
 ï¿½ Open Ceiling on Family Room



Opt. Walk-In Shower



Opt. Media Room
 ï¿½ Open Ceiling on Family Room

Want to Know More
 About This Home?

CONTACT OUR COMMUNITY SALES MANAGER
 Call Us @ 470.248.2097