



PRICED AT  
**\$599,020**

 2518 Sq Ft

 4 Beds

 3.0 Baths

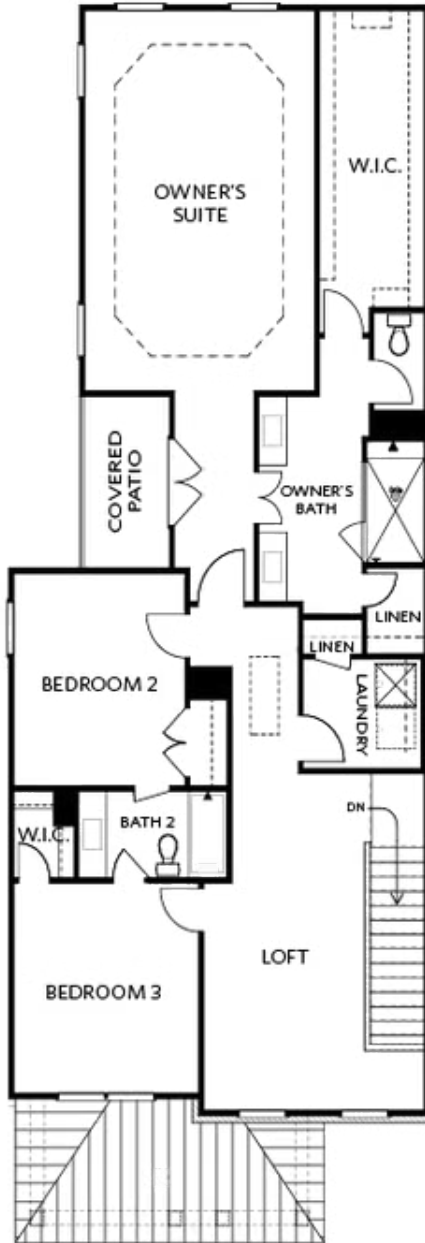
 2 Car Garage

 3.0 Story

Kincaid B - By The Providence Group - Gorgeous Home! New Construction! This may be the one for you! Courtyard home with patio - The Kincaid floorplan offers a guest bedroom/office with full bath/walk in shower on the main floor and 10 ft. Ceilings. 9 ft ceilings on the 2nd floor where you will find a wonderful Owner's Suite with HUGE master bedroom, your own private deck for coffee sipping, big master closet, separate vanities and walk in shower. The secondary bedrooms have a Jack and Jill bath layout. The Loft upstairs could be for gaming, office or another family room. Kitchen has white cabinets with the island being midnight/navy. Lots of interior upgrades! This home is in a fantastic location within the community. Great home to make yours today and ring in the holidays! Home is under construction and estimated to be completed in Nov/Dec 2022, Pictures represent a previously built home by The Providence Group, not the actual home since it is under construction Unwrap the Savings with \$20,000 towards closing costs with preferred lender on homes written by Dec 22, 2022 and closed by Jan 31, 2023!

**Want to Know More  
About This Home?**

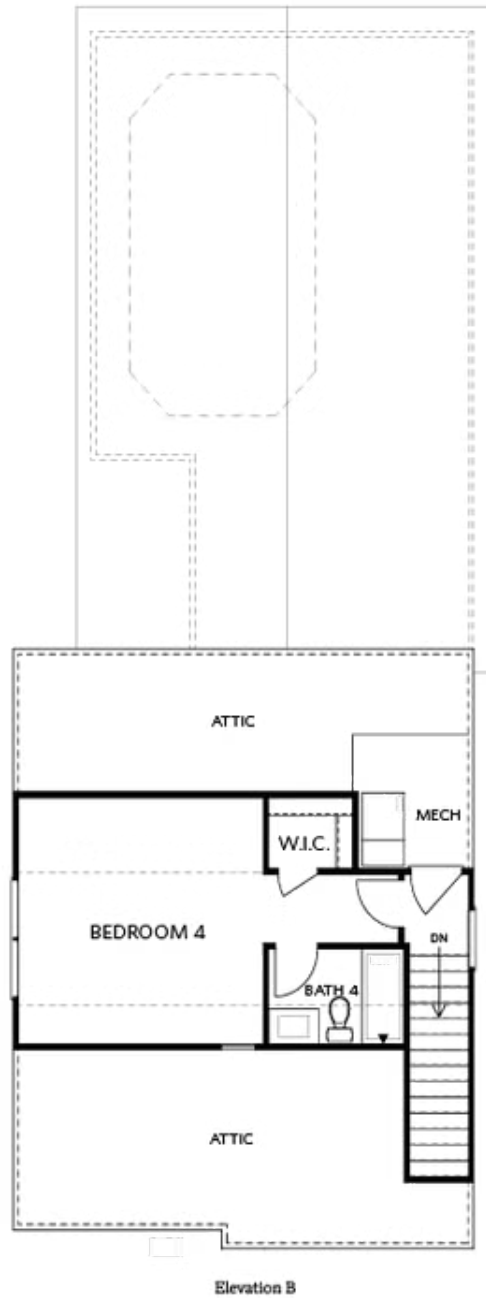
CONTACT OUR COMMUNITY SALES MANAGER  
Call Us @ 470.248.2097



Elevation B

Want to Know More  
About This Home?

CONTACT OUR COMMUNITY SALES MANAGER  
Call Us @ 470.248.2097



Want to Know More  
About This Home?

CONTACT OUR COMMUNITY SALES MANAGER  
Call Us @ 470.248.2097