



PRICED AT
\$522,400

 2004 Sq Ft

 3 Beds

 3.5 Baths

 2 Car Garage

 3.0 Story

END UNIT home in a Gated community. **Elevate your life in 2023 with a new home by The Providence Group and \$10,000 towards closing cost when financing with one of Seller's 4 preferred lenders- Home must close by 9/30/23****. Home is Under Construction with estimated completion June 2023. Upgrade options included in this home are a Sunroom for extra living space and a Separate Tub/Shower in the Owners Bathroom! Each bedroom has its own bathroom!!! This townhome is a spacious 3 story design floor plan offering a private entry & bedroom with full bath on terrace level. This 3 bedroom, 3.5 bath home has an Open Concept main level. A gourmet kitchen with beautiful design finishes include neutral tones with white cabinets, quartz countertops, stainless appliances. Make this home your home today!! This home is in a fantastic location within the community. This community is in highly desirable location in unincorporated Gwinnett County and close to 3 vibrant cities - downtown Sugar Hill, Suwanee Town Center and Buford!! Incredible amenities will be Incredible amenities will be Gated, Resort-style pool with covered cabana, grills, fireplace, and outdoor dining area and a community lawn featuring Adirondack group seating and fire pits Easy ...

**Want to Know More
About This Home?**

CONTACT OUR NEW HOME NAVIGATOR

NONE

Call Us @ 470-248-2097

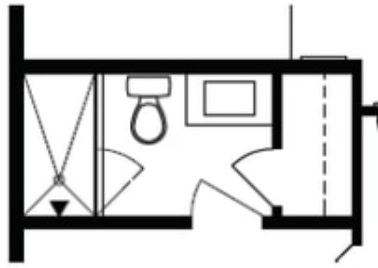


Want to Know More
About This Home?

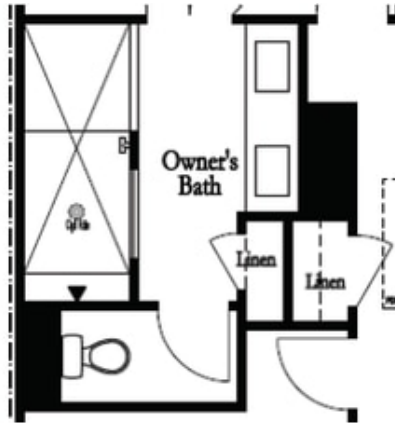
CONTACT OUR NEW HOME NAVIGATOR

NONE

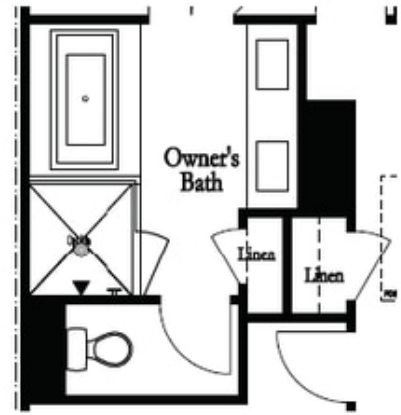
Call Us @ 470-248-2097



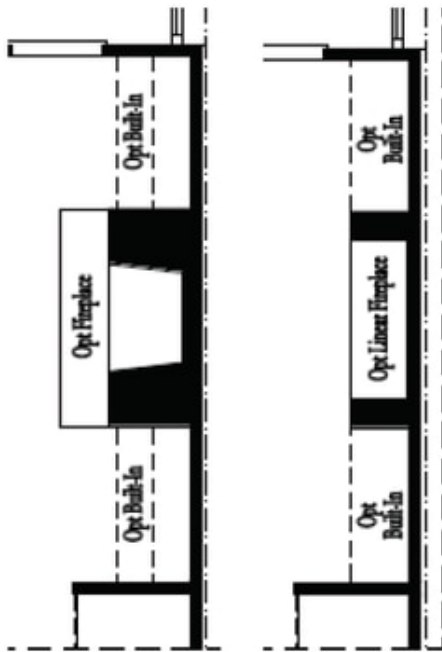
Optional Bath 3 Shower ilo Tub



Optional Owner's Luxury Shower

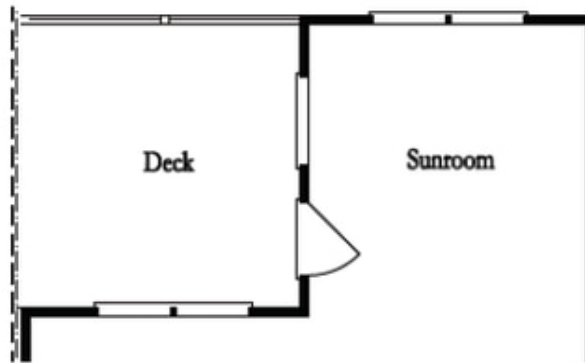


Optional Owner's Shower & Tub

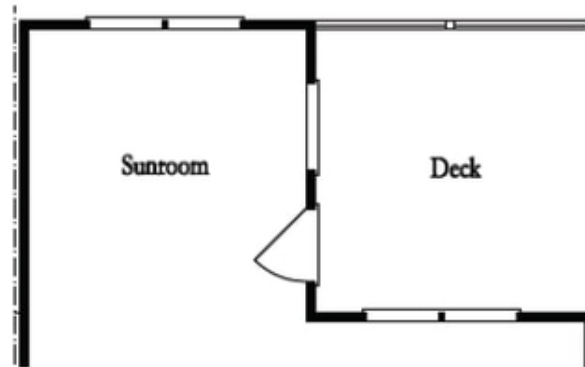


Optional
Family Room
Fireplace

Optional
Family Room
Linear Fireplace



Optional Sunroom 1 ilo Extended Deck



Optional Sunroom 2 ilo Extended Deck

**Want to Know More
About This Home?**

CONTACT OUR NEW HOME NAVIGATOR

NONE

Call Us @ 470-248-2097