



PRICED AT
\$509,400

 1994 Sq Ft

 3 Beds

 3.5 Baths

 2 Car Garage

 3.0 Story

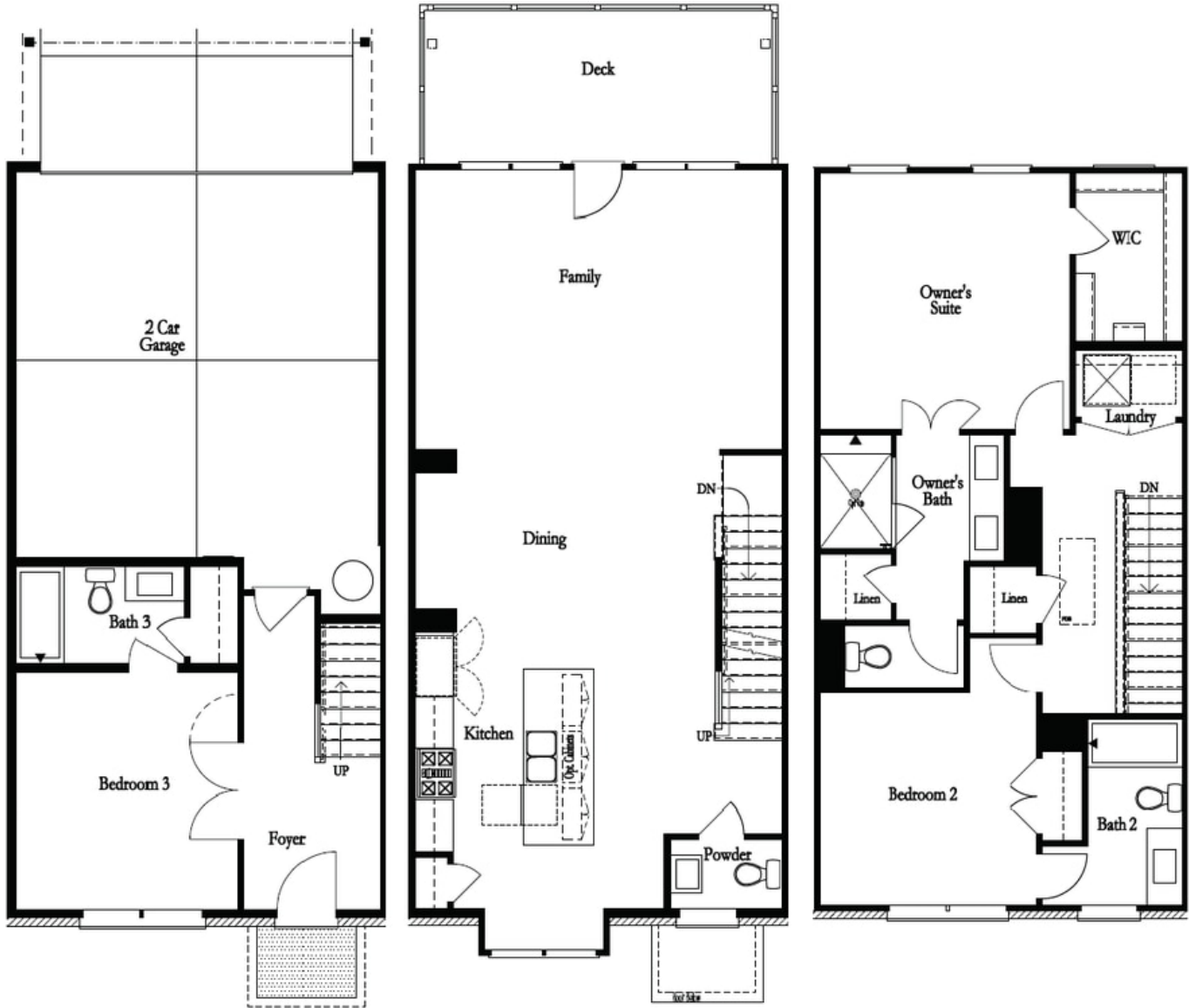
QUICK CLOSE!!!Elevate your life in 2023 with a new home by The Providence Group and \$10,000 towards closing cost when financing with one of Seller's 4 preferred lenders- Home must close by 9/30/23**.** Our Popular Glendale Plan is waiting for you to enjoy this spacious 3 story floorplan! This homesite has the Huge Upgraded Walk in Shower with drying area and a Sunroom for extra living space/ office relaxation that leads onto your deck. Just off the terrace level entry foyer, you will find a private bedroom and full bath for guests. The Main level is the definition of open concept living with gourmet kitchen complete with large island, stainless steel appliances, quartz countertop and tile backsplash. The kitchen is adjacent to the dining room, family room and sunroom. The Upper level boasts comfortable living in owner's suite with large walk-in closet, owners bath with dual vanities and a mega walk in shower with drying area. The secondary bedroom has its own private bath and the laundry room is also upstairs for laundry day convenience. 2 car rear entry garage with garage door openers. The Design team has selected the Warm Slate Collection with beautiful design elements for this home! ...

**Want to Know More
About This Home?**

CONTACT OUR NEW HOME NAVIGATOR

NONE

Call Us @ 470-248-2097

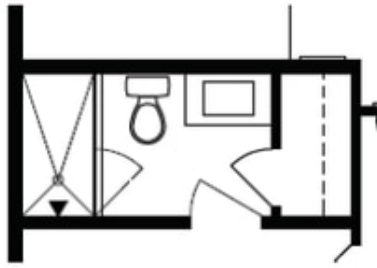


Want to Know More
About This Home?

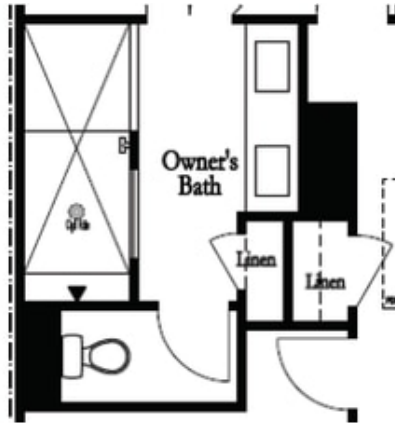
CONTACT OUR NEW HOME NAVIGATOR

NONE

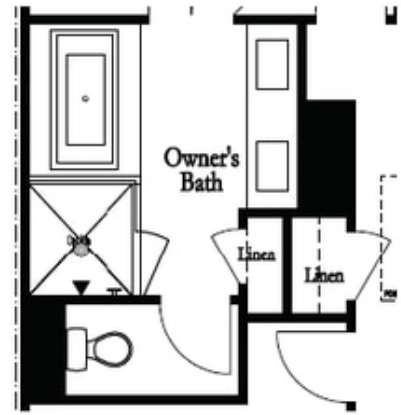
Call Us @ 470-248-2097



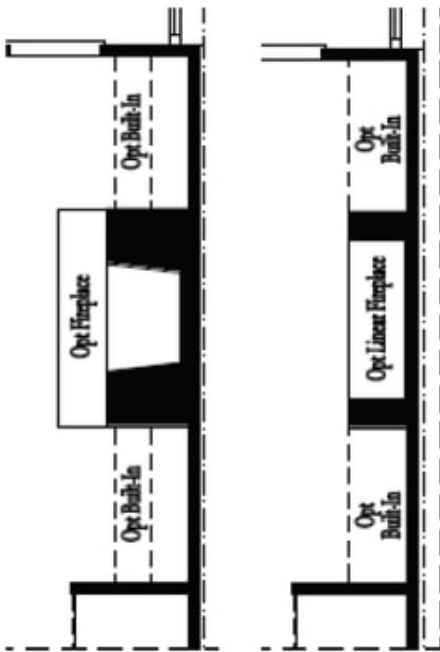
Optional Bath 3 Shower ilo Tub



Optional Owner's Luxury Shower

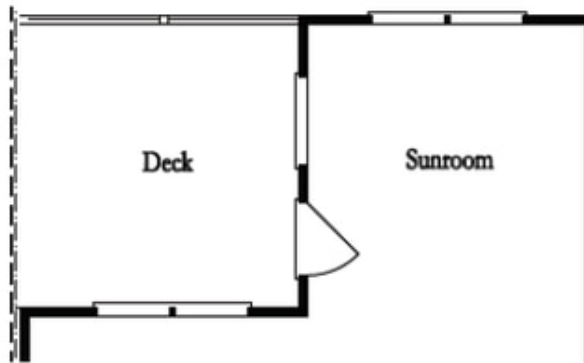


Optional Owner's Shower & Tub

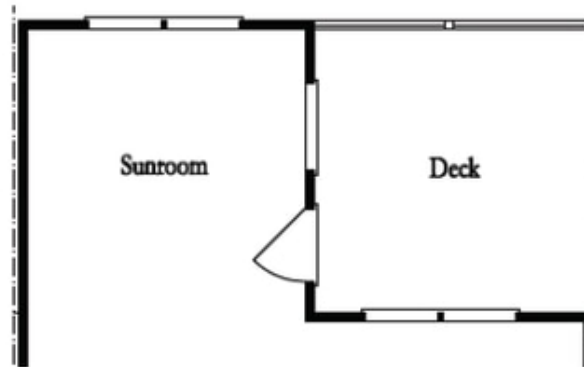


Optional
Family Room
Fireplace

Optional
Family Room
Linear Fireplace



Optional Sunroom 1 ilo Extended Deck



Optional Sunroom 2 ilo Extended Deck

**Want to Know More
About This Home?**

CONTACT OUR NEW HOME NAVIGATOR

NONE

Call Us @ 470-248-2097