



PRICED AT
\$528,650

 1893 Sq Ft

 3 Beds

 3.5 Baths

 2 Car Garage

 3.0 Story

Elevate Your Life in 2023! The Glendale Floor Plan by The Providence Group. This End Unit is in a Gated community with amazing amenities and has all the upgrades that are in high demand. This home features a Sunroom, Fireplace & the Walk in Shower with drying area in the Owner's bathroom!! Home in Under Construction and estimated completion Jan/Feb23 The design team has selected the beautiful Cool Linen Collection in this 3 bedroom 3.5 bathroom home. Enjoy an Open Concept on the main level, a beautiful kitchen with White cabinets, quartz countertops with pretty gray veining, tile backsplash and stainless appliances. The owners bath located on the upper floor has an enlarged shower and dual vanities with quartz countertops. The secondary bedrooms each have its own private bathroom. This home is in a fantastic location within the community. This community is in highly desirable location in unincorporated Gwinnett County and close to 3 vibrant cities - downtown Sugar Hill, Suwanee Town Center and Buford!! Incredible amenities will be Pool, Clubhouse, Parks and Green Space coffee bar. Easy Access to interstates, shopping and restaurants. \$5,000 Closing cost incentive with with use of one of the Preferred Lenders Ameris Bank, Capital ...

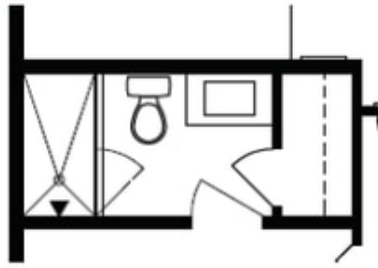
**Want to Know More
About This Home?**

CONTACT OUR NEW HOME NAVIGATOR
Call Us @ 470-248-2097

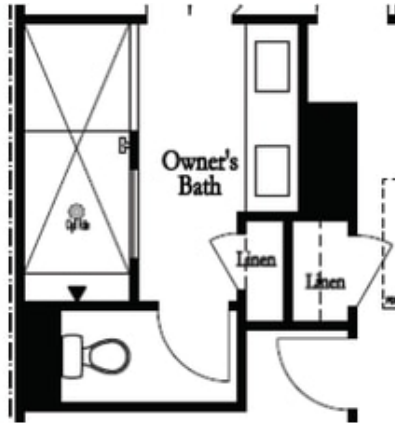


Want to Know More
About This Home?

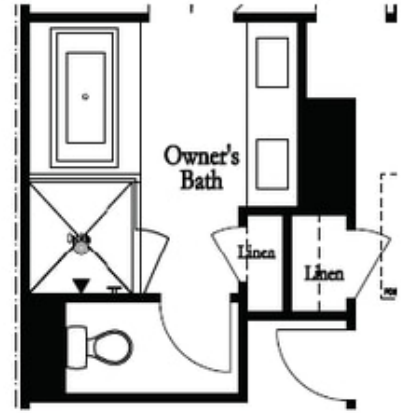
CONTACT OUR NEW HOME NAVIGATOR
Call Us @ 470-248-2097



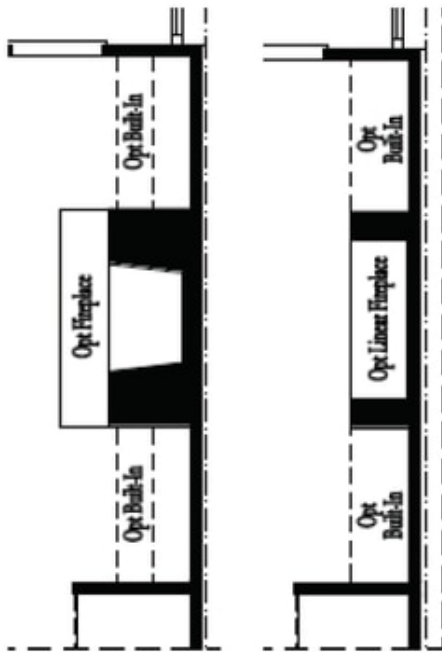
Optional Bath 3 Shower ilo Tub



Optional Owner's Luxury Shower

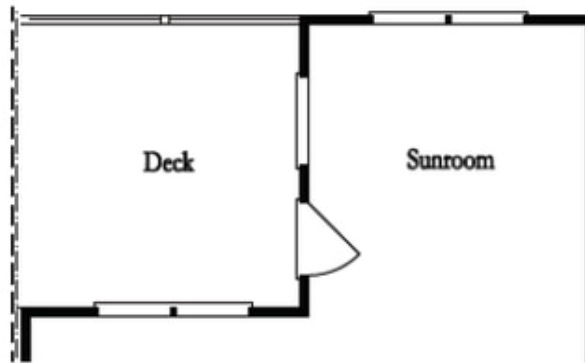


Optional Owner's Shower & Tub

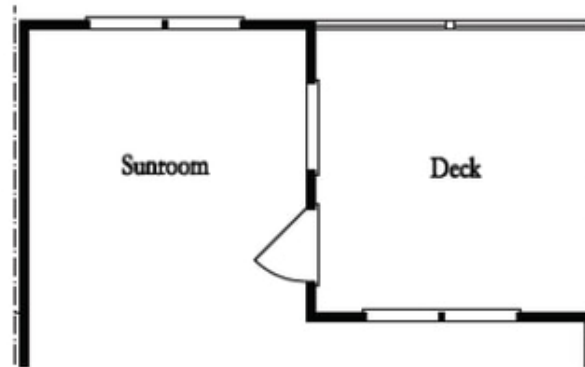


Optional Family Room Fireplace

Optional Family Room Linear Fireplace



Optional Sunroom 1 ilo Extended Deck



Optional Sunroom 2 ilo Extended Deck

**Want to Know More
 About This Home?**

CONTACT OUR NEW HOME NAVIGATOR
 Call Us @ 470-248-2097