



PRICED AT  
**\$513,820**

 2030 Sq Ft

 3 Beds

 2.5 Baths

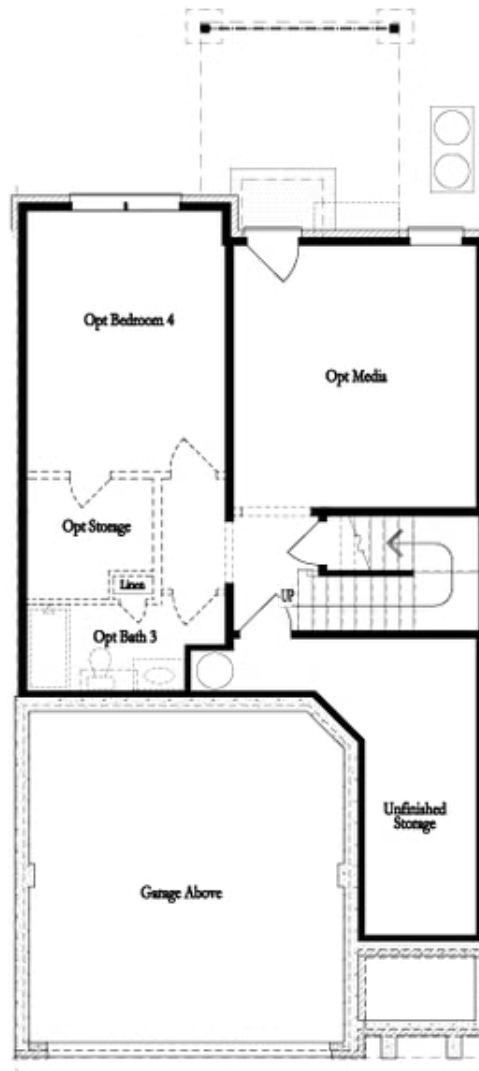
 2 Car Garage

 2.0 Story

MOVE IN READY HOME - QUICK CLOSE!!! ELEVATE YOUR LIFE IN 2023! NEW YEAR NEW PRICE PLUS \$20,000 ANY WAY YOU WANT IT ON CONTRACTS WRITTEN BY MARCH 31, 2023 Ask us or call for details.\*\* This wonderful 2 story Townhome The Stockton Plan by The Providence Group could be yours!! This is a brand new home is under construction in a Gated Community . This home has the Slate Design Package selected and upgraded Walk in Shower with Drying area in the owner's bathroom and a Fireplace on the main floor. Your new home will offer entry on main level and garage in front and a cozy backyard. Foyer leads to your Open Concept main level with a Large kitchen island, quartz countertops that will overlook the dining & family room. All 3 bedrooms are on the 2nd floor including the laundry room which is located in the hallway on the upper level. Blinds are included in this home! This brand new highly anticipated community is in desirable location in unincorporated Gwinnett County and close to 3 vibrant cities - downtown Sugar Hill, Suwanee Town Center and Buford!! Incredible amenities will be Pool, Clubhouse, fitness center, Parks and Green ...

**Want to Know More  
About This Home?**

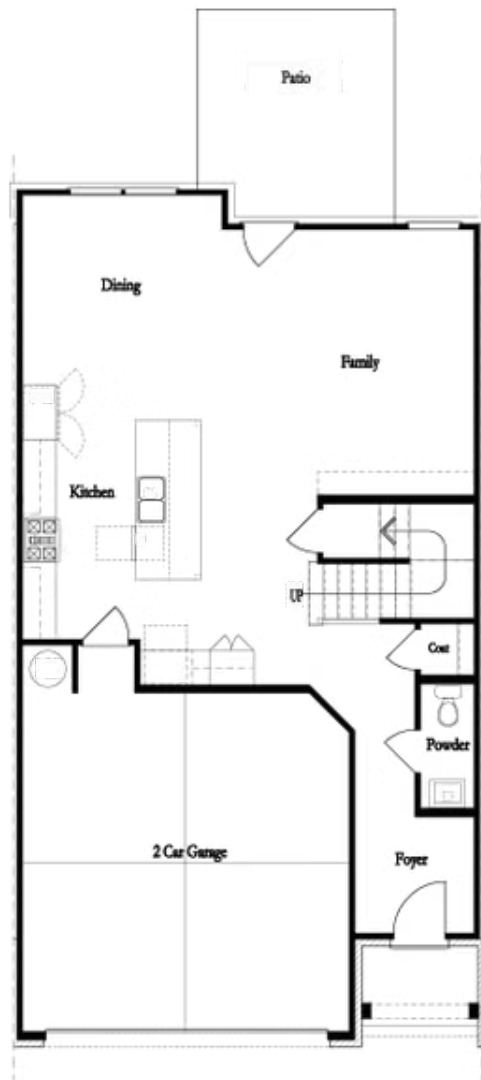
CONTACT OUR COMMUNITY SALES MANAGER  
Call Us @ 470.248.2097



Unfinished Basement

Want to Know More  
About This Home?

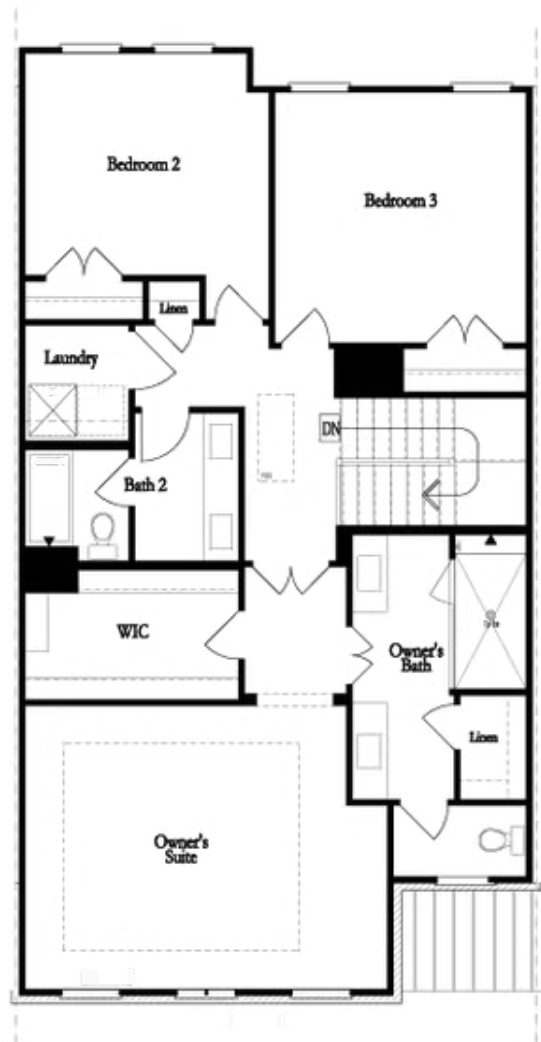
CONTACT OUR COMMUNITY SALES MANAGER  
Call Us @ 470.248.2097



**First Floor**

**Want to Know More  
About This Home?**

CONTACT OUR COMMUNITY SALES MANAGER  
Call Us @ 470.248.2097

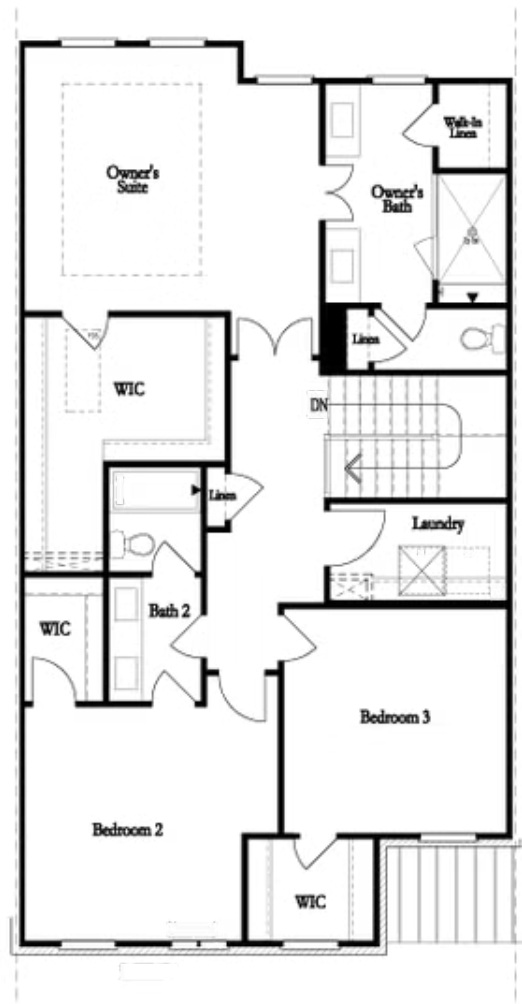


Second Floor  
(Owner's Front)

Elevations G, H, J1, J3 & L

Want to Know More  
About This Home?

CONTACT OUR COMMUNITY SALES MANAGER  
Call Us @ 470.248.2097

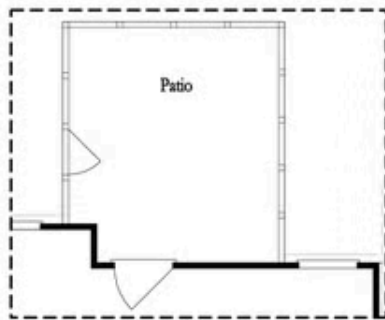


Second Floor  
(Owner's Rear)

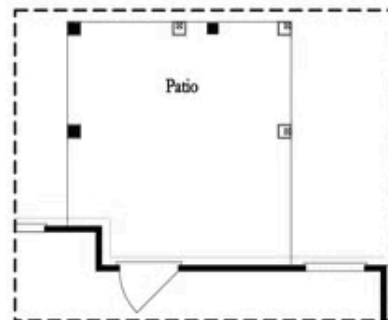
Elevations G, H, J1, J3 & L

Want to Know More  
About This Home?

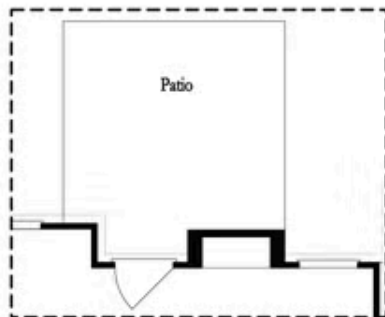
CONTACT OUR COMMUNITY SALES MANAGER  
Call Us @ 470.248.2097



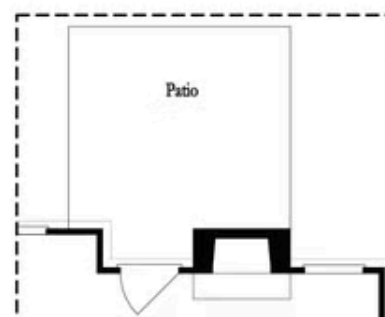
Opt. Screened Patio



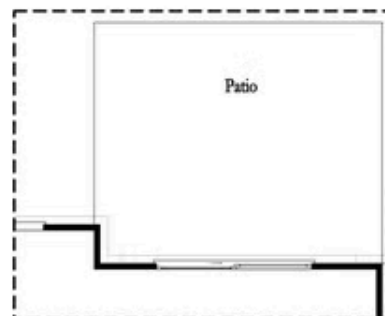
Opt. Coverd Patio



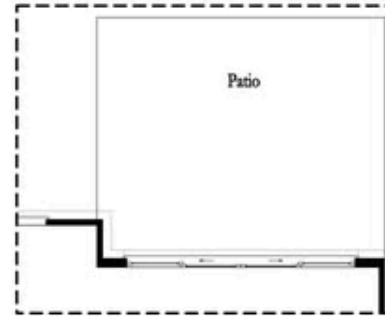
Opt. Linear Fireplace



Opt. Fireplace



Opt. 8 Foot Slider Door

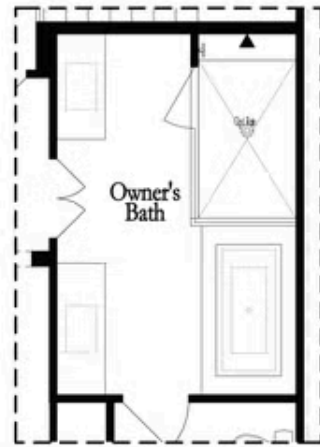


Opt. 12 Foot Slider Door

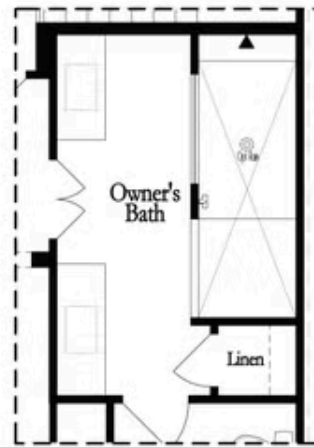
### Main Level Options

Want to Know More  
About This Home?

CONTACT OUR COMMUNITY SALES MANAGER  
Call Us @ 470.248.2097

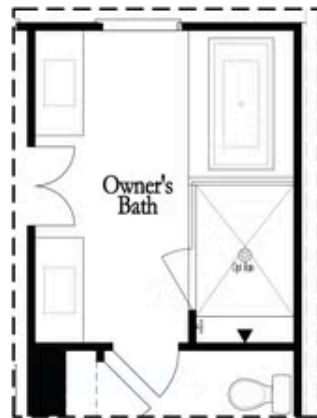


Opt. Shower/Tub

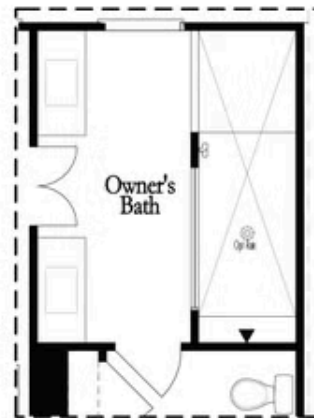


Opt. Walk-Through Shower

Owner's Front - Options



Opt. Shower/Tub



Opt. Walk-Through Shower

Owner's Rear - Options

Want to Know More  
About This Home?

CONTACT OUR COMMUNITY SALES MANAGER  
Call Us @ 470.248.2097