








PRICED AT
\$419,800

-  1752 Sq Ft
-  3 Beds
-  2.5 Baths
-  2 Car Garage
-  2.0 Story

Elevate your life in 2023 with a new home by The Providence Group and \$5,000 towards closing cost when financing with one of Seller's 4 preferred lenders. Limited Time to pick out your Interior Selections!!! The 2 story Brittany floor plan features the entrance on the main level with garage in front and a cozy fenced backyard. A Private foyer on the main level leads you to a Gourmet Kitchen, Large island and quartz countertops that overlook the dining & family room. When you head to the 2nd floor you will enter a spacious owner's suite that offers a soaking tub and separate shower, dual vanities with quartz countertops & a huge walk in closet. 2 secondary bedrooms are on opposite end of hallway and have a shared bath. The laundry room is located on the upper level for easy convenience. This community is in a highly desirable location in unincorporated Gwinnett County and close to 3 vibrant cities - downtown Sugar Hill, Suwanee Town Center and Buford!! Incredible amenities will be Gated, Pool, fitness center, Parks and Green Space with coffee bar. Easy Access to interstates, shopping and restaurants. Inquire about closing cost contribution incentive with any of our ...

**Want to Know More
About This Home?**

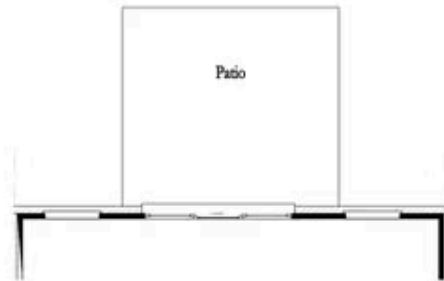
CONTACT OUR COMMUNITY SALES MANAGER
Call Us @ 470.248.2097



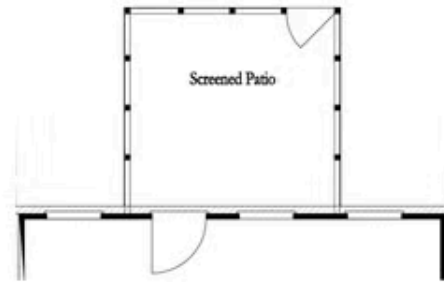
Want to Know More
About This Home?

CONTACT OUR COMMUNITY SALES MANAGER
Call Us @ 470.248.2097

First Floor Options



8' Slider Door



Screened Patio



Covered Patio



Fireplace

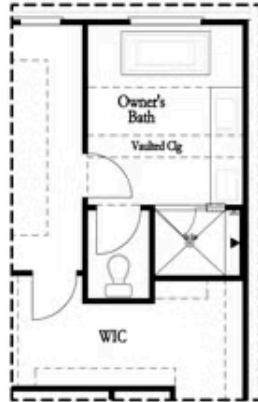


Linear Fireplace

Want to Know More
About This Home?

CONTACT OUR COMMUNITY SALES MANAGER
Call Us @ 470.248.2097

Second Floor Options

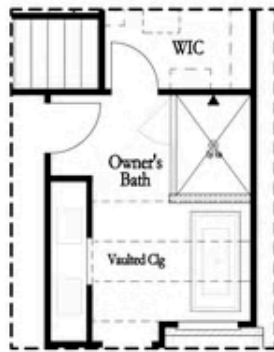


Shower with Freestanding Tub Combo

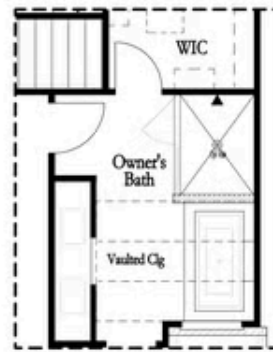


Shower with Decked Tub Combo

Owner's Rear Options



Shower with Freestanding Tub Combo



Shower with Decked Tub Combo

Owner's Front Options

Want to Know More
About This Home?

CONTACT OUR COMMUNITY SALES MANAGER
Call Us @ 470.248.2097