



PRICED AT
\$426,650

 1752 Sq Ft

 3 Beds

 2.5 Baths

 2 Car Garage

 2.0 Story

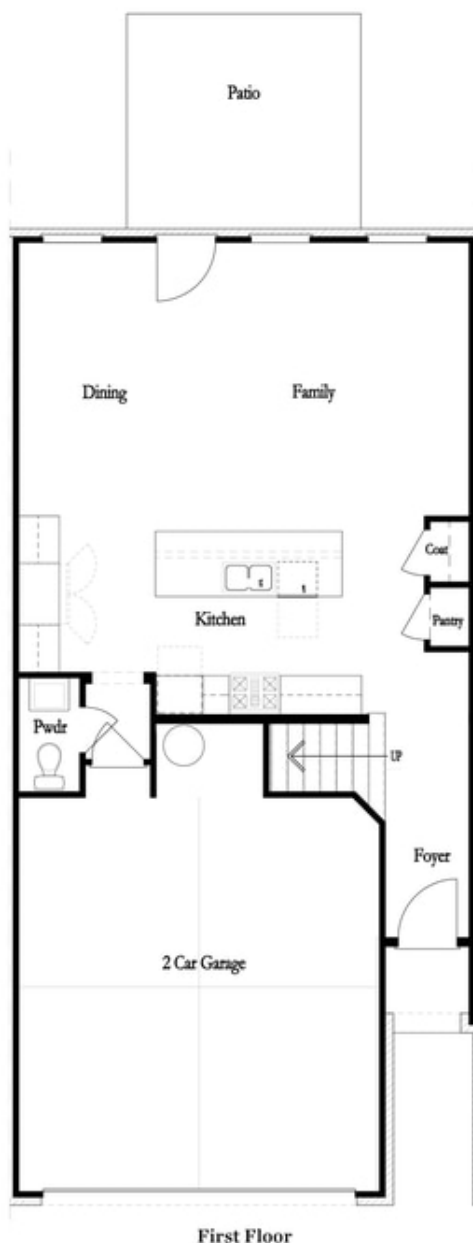
Elevate your life in 2023 with a new home by The Providence Group and \$5,000 towards closing cost when financing with one of Seller's 4 preferred lenders. The Brittany by The Providence Group - is our brand new 2 story townhome floor plan. Foyer entry on the main level leads to a spacious open 1st floor featuring a designer kitchen, family room and dining area. The gourmet kitchen has white cabinets, quartz countertops, a tile backsplash and stainless appliances. A massive island has plenty of space for dinner prep and also large enough for 3-4 barstools for a more casual eat in area. Beyond the kitchen, you will find a family room with a cozy fireplace. Exit the back door to find a quaint, fenced backyard. On the 2nd floor, you will enter a spacious owner's suite with a huge walk-in closet and the owners bath that offers a tiled Shower, dual vanities with quartz countertops. The laundry room is located in the hallway on the upper level along with 2 secondary bedrooms and shared bath. This community is in a highly desirable location in unincorporated Gwinnett County and close to 3 vibrant cities - downtown Sugar Hill, Suwanee Town ...

**Want to Know More
About This Home?**

CONTACT OUR NEW HOME NAVIGATOR

NONE

Call Us @ 470-248-2097



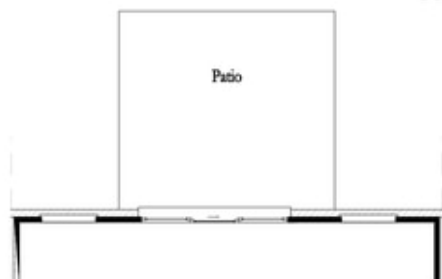
Want to Know More
About This Home?

CONTACT OUR NEW HOME NAVIGATOR

NONE

Call Us @ 470-248-2097

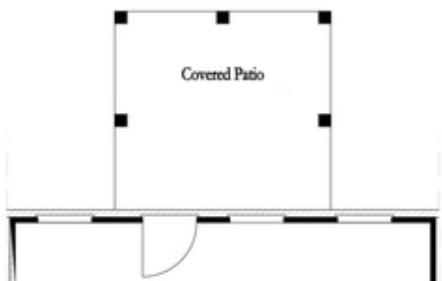
First Floor Options



8' Slider Door



Screened Patio



Covered Patio



Fireplace



Linear Fireplace

Want to Know More
About This Home?

CONTACT OUR NEW HOME NAVIGATOR

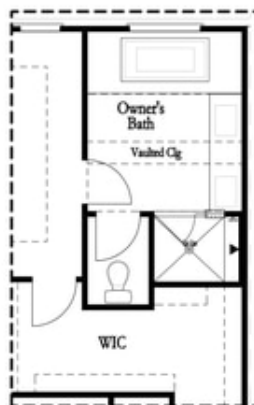
NONE

Call Us @ 470-248-2097

Second Floor Options

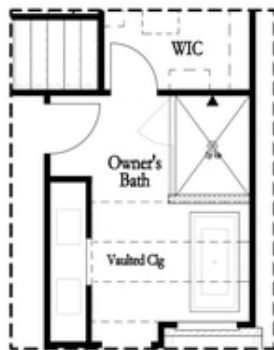


Shower with Freestanding Tub Combo

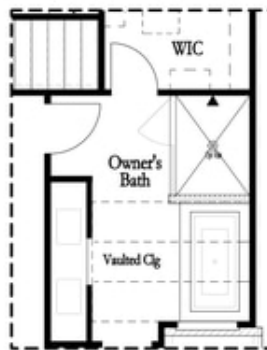


Shower with Decked Tub Combo

Owner's Rear Options



Shower with Freestanding Tub Combo



Shower with Decked Tub Combo

Owner's Front Options

Want to Know More
About This Home?

CONTACT OUR NEW HOME NAVIGATOR

NONE

Call Us @ 470-248-2097