



PRICED AT
\$675,950

 2479 Sq Ft

 4 Beds

 3.0 Baths

 2 Car Garage

 3.0 Story

Sizzling Summer Savings - Kincaid D - New Construction with The Providence Group! Highly Sought after floor plan! Courtyard home with patio AND Private Balcony off of HUGE Owner's bedroom! Fantastic location within the community! Beautiful courtyard home with cement siding and rear entry garage. Upon entering the Kincaid floorplan, you will find 10 ft. Ceilings on the main floor and gorgeous hard surface floors throughout the main living space. The gourmet kitchen features a walk in pantry with open view to the family and dining room. Features will include Quartz kitchen countertops, tile backsplash, stainless appliances and single bowl kitchen sink finish out the design features in the kitchen. The family room offers an open concept layout to the kitchen so everyone can be together and there is a private Guest suite with full bathroom on the main floor featuring a walk in shower. On the 2nd floor, you will find the Huge Owner's Suite which has a massive walk in closet, separate vanities and walk in shower. There is a shared bath for the secondary upstairs bedrooms. Your laundry room is conveniently located between the owners bedroom and the secondary bedrooms in the hallway. As a bonus, this ...

**Want to Know More
About This Home?**

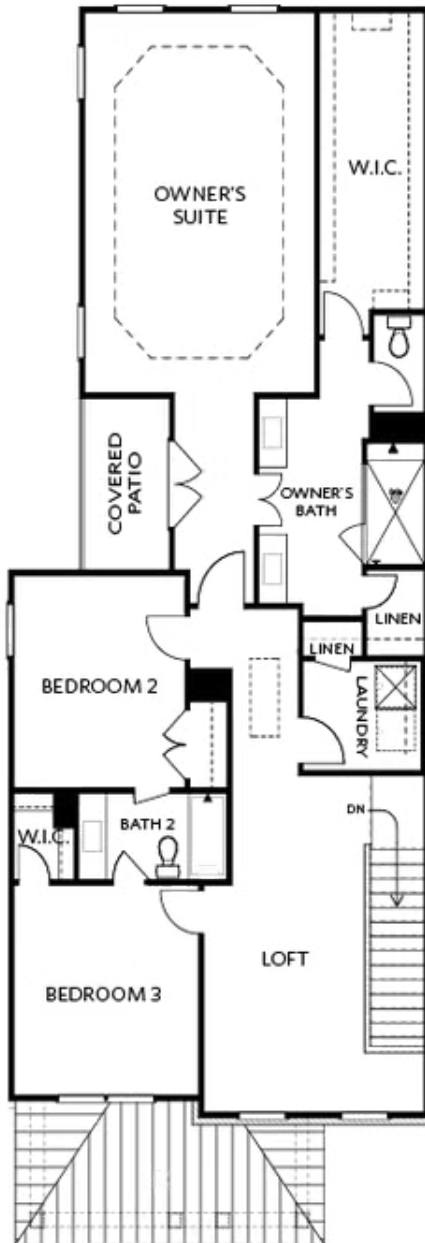
CONTACT OUR COMMUNITY SALES MANAGER
Call Us @ 470.248.2097



Elevation B

Want to Know More
About This Home?

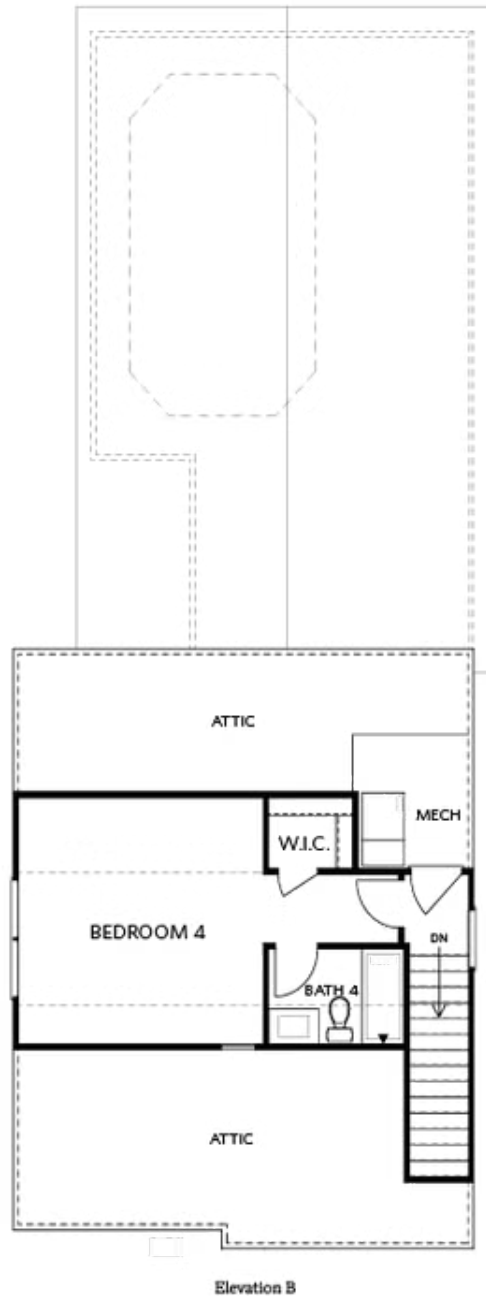
CONTACT OUR COMMUNITY SALES MANAGER
Call Us @ 470.248.2097



Elevation B

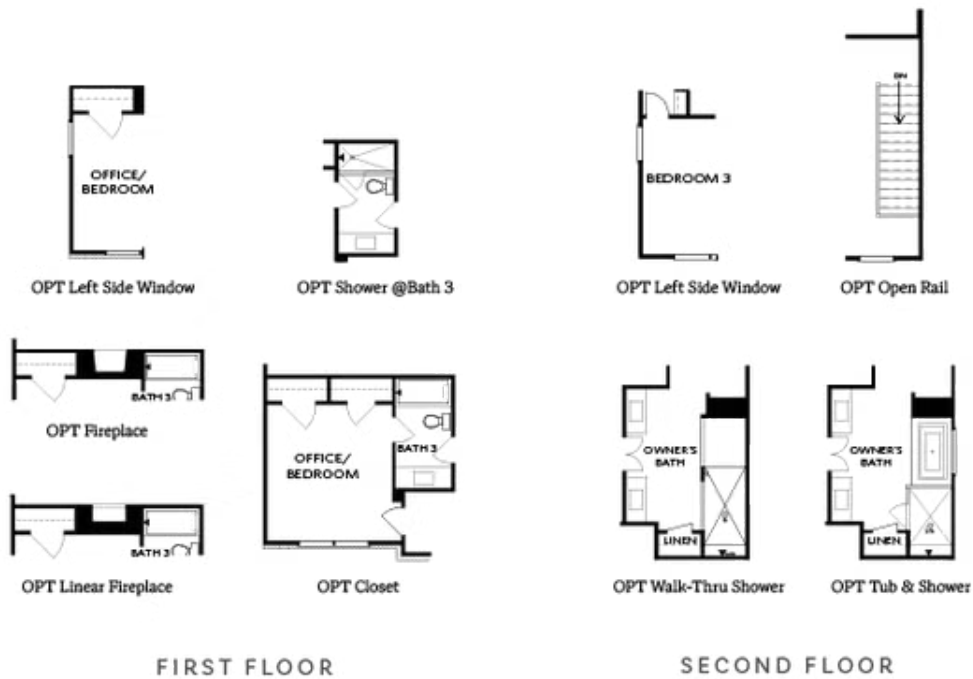
Want to Know More
About This Home?

CONTACT OUR COMMUNITY SALES MANAGER
Call Us @ 470.248.2097



Want to Know More
About This Home?

CONTACT OUR COMMUNITY SALES MANAGER
Call Us @ 470.248.2097



Want to Know More
About This Home?

CONTACT OUR COMMUNITY SALES MANAGER
Call Us @ 470.248.2097