



PRICED AT
\$668,340

 2483 Sq Ft

 4 Beds

 3.0 Baths

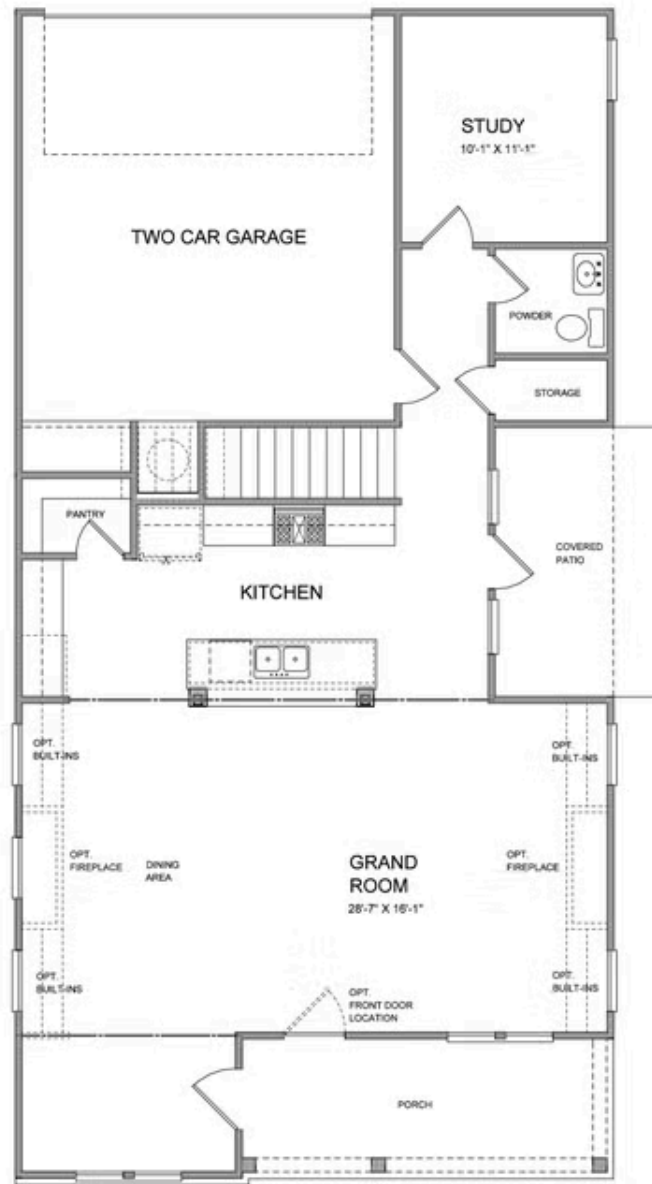
 2 Car Garage

 2.0 Story

Sizzling Summer Savings by The Providence Group and \$5,000 towards closing cost when financing with one of Seller's 5 preferred lenders. Owens A - New Construction! Courtyard home with covered patio and Beautiful farmhouse style elevation with siding, metal roof on front porch, and brick watertable with rear entry garage. Upon entering the Owens floorplan, you will find 10 ft. Ceilings on the main floor and gorgeous hard surface floors throughout the main living space. The gourmet kitchen features stacked white cabinets around the perimeter and driftwood stain on the island for that on trend look, Quartz/cambria kitchen countertops, tile backsplash, stainless appliances with double oven and white porcelain farmhouse sink finish out the design selections in the kitchen. The family room, kitchen and dining area are all open concept living. There is a private Guest suite with full bathroom on the main floor. On the 2nd floor through double doors, you will find the Huge Owner's Suite which has separate his and hers closets, separate vanities and and a walk in shower. As you leave the owners bedroom and head to the secondary bedrooms, you will pass the laundry room which is conveniently located for all parties. There is ...

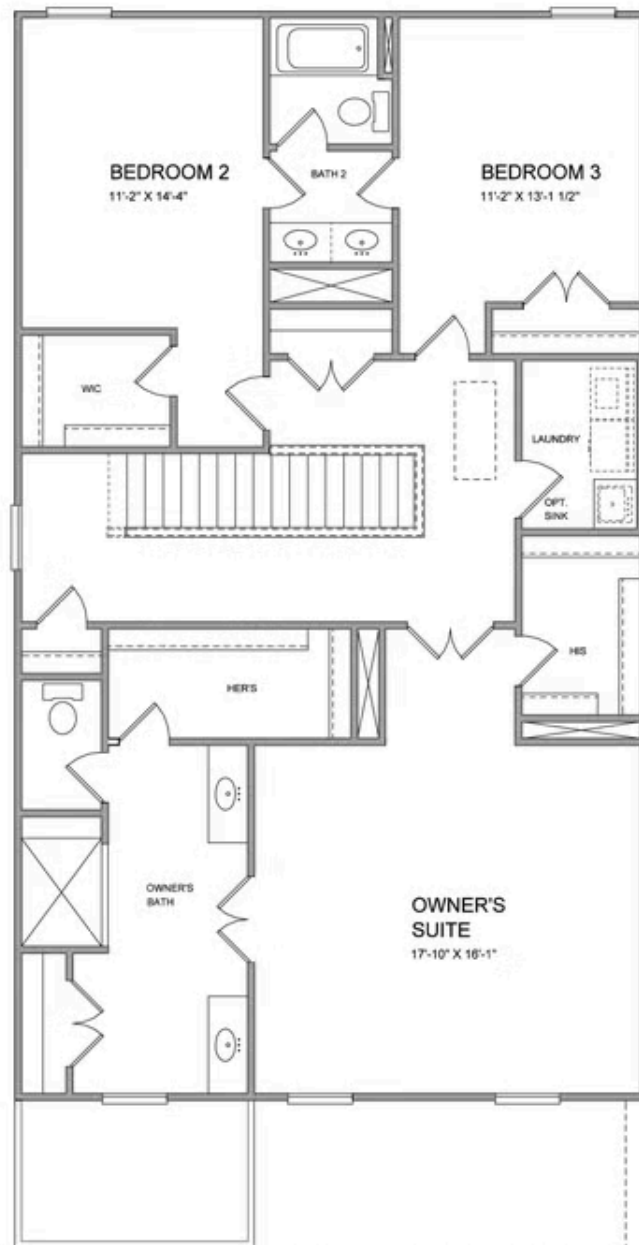
Want to Know More
About This Home?

CONTACT OUR COMMUNITY SALES MANAGER
Call Us @ 470.248.2097



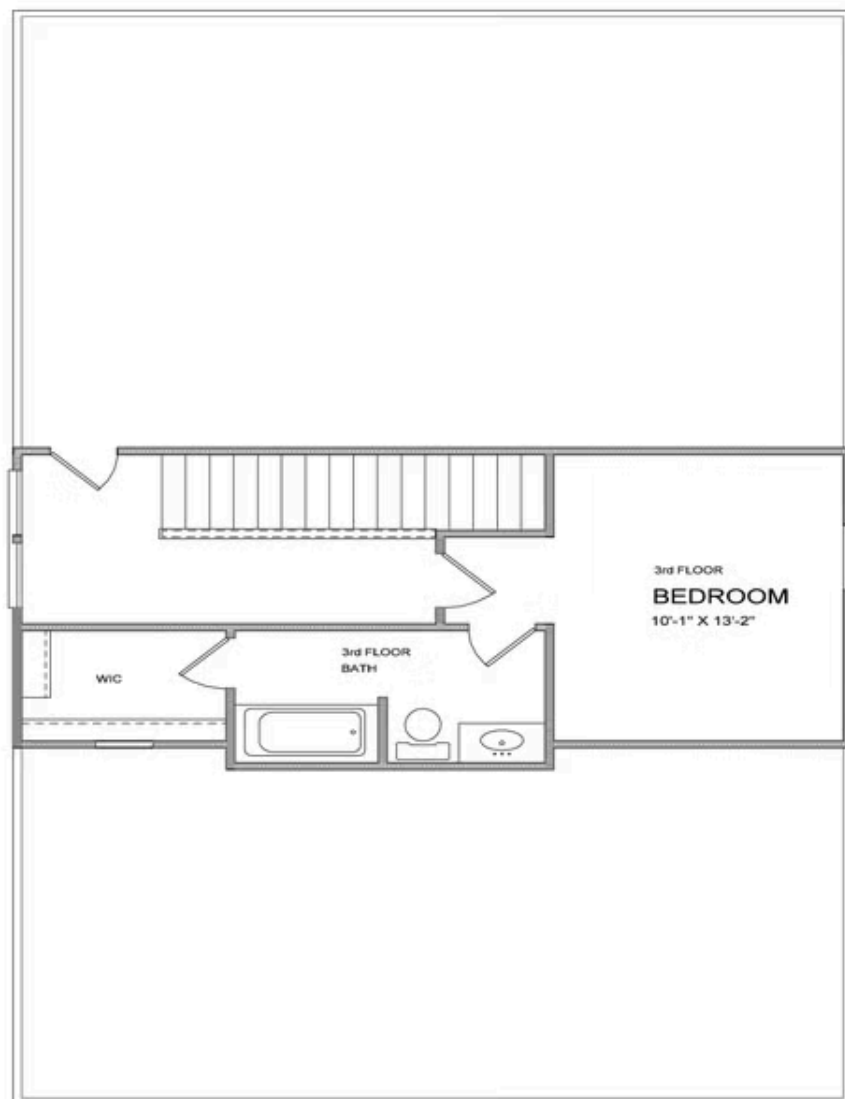
Want to Know More
About This Home?

CONTACT OUR COMMUNITY SALES MANAGER
Call Us @ 470.248.2097



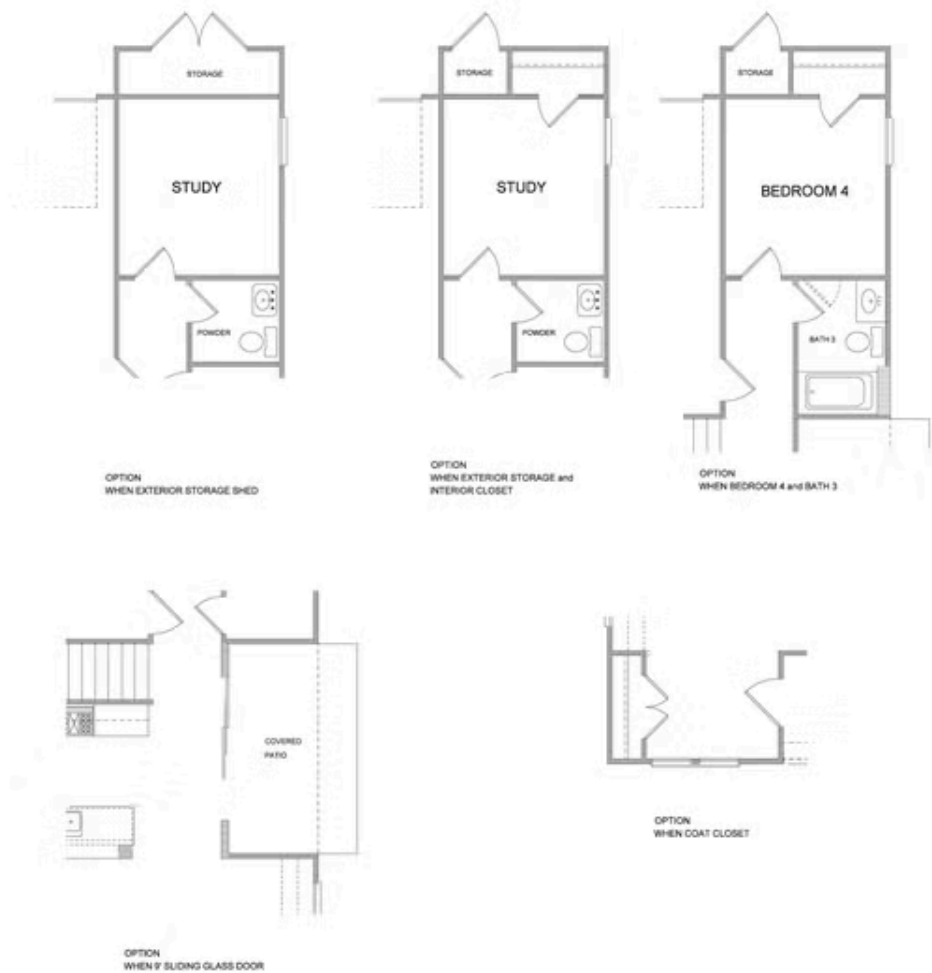
**Want to Know More
About This Home?**

CONTACT OUR COMMUNITY SALES MANAGER
Call Us @ 470.248.2097



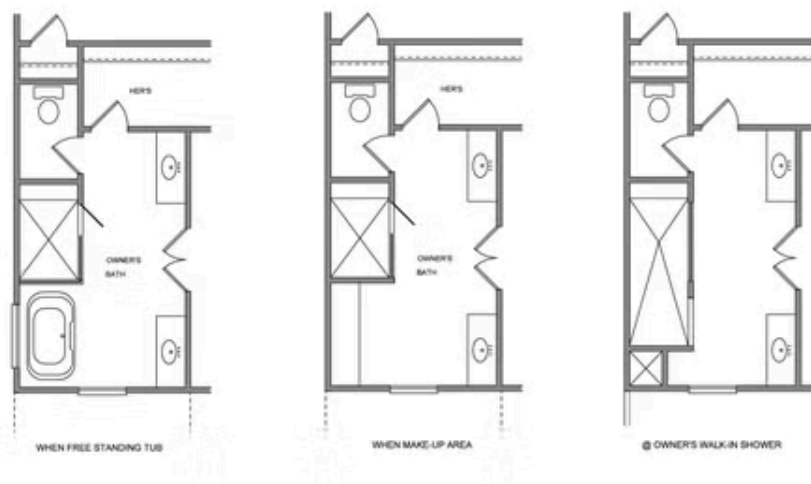
Want to Know More
About This Home?

CONTACT OUR COMMUNITY SALES MANAGER
Call Us @ 470.248.2097



Want to Know More
About This Home?

CONTACT OUR COMMUNITY SALES MANAGER
Call Us @ 470.248.2097



Want to Know More
About This Home?

CONTACT OUR COMMUNITY SALES MANAGER
Call Us @ 470.248.2097