



PRICED FROM
\$574,500

 2,236 Sq Ft

 4 Beds

 3.5 Baths

 2 Car Garage

 2.0 Story

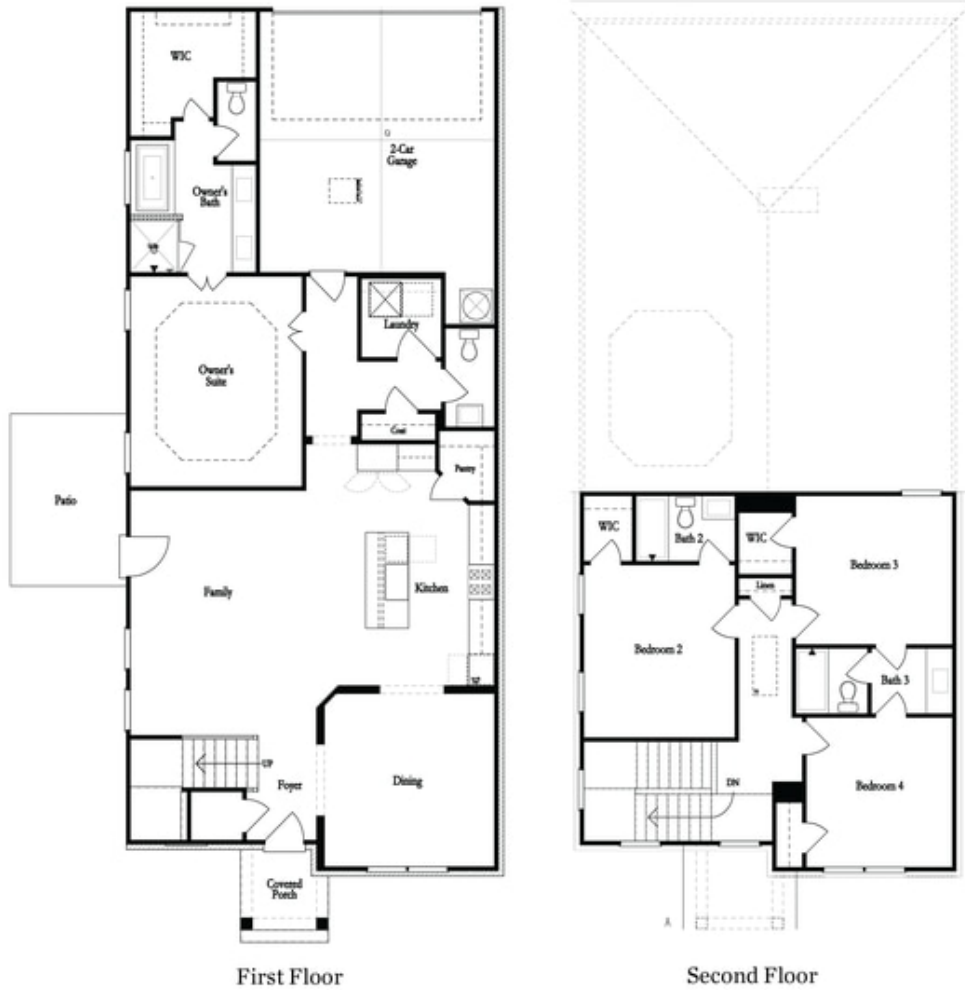
- Separate Formal Dining Room
- Open Main Level Layout Spacious Family Room with Access to Outdoor Living
- Gourmet Kitchen with Island and Walk In Pantry
- Three Additional Bedrooms on the Upper Level with Full or Shared Bath
- Two Car Rear Entry Garage

[Read More Online](#)

Available Elevations

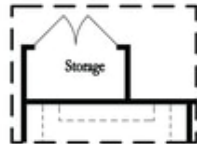


Elevation C

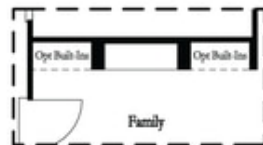


**Want to Know More
 About This Home?**

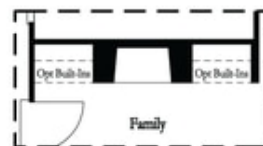
CONTACT OUR NEW HOME NAVIGATOR
 Call Us @ 470-248-2097



Optional Storage Room

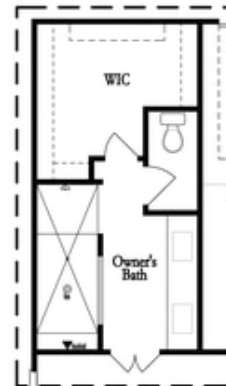


Optional Linear Fireplace



Optional Direct Vent Fireplace

First Floor Options



Optional Walk-Thru Shower

Second Floor Options

**Want to Know More
 About This Home?**

CONTACT OUR NEW HOME NAVIGATOR
 Call Us @ 470-248-2097