



PRICED FROM  
**\$488,600**

 1,893 - 2,004 Sq Ft

 3 Beds

 3.5 Baths

 2 Car Garage

 3.0 Story

- Spacious Three Story Design with Open Main Level Layout
- Gourmet Kitchen with Island overlooking Dining and Family Room
- Owner's Suite and Private Bath with Dual Vanities and Over Size Walk-In Closet on Upper Level
- A Secondary Bedroom and Laundry on Upper Level
- Two Car Garage

[Read More Online](#)

## Available Elevations



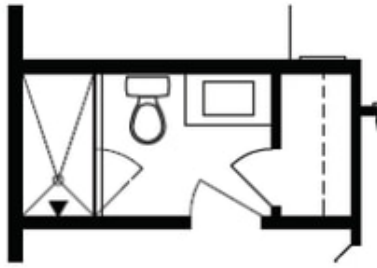
Glendale Exterior at Millcroft



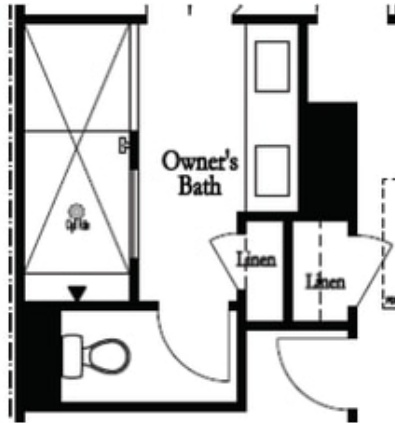


**Want to Know More  
 About This Home?**

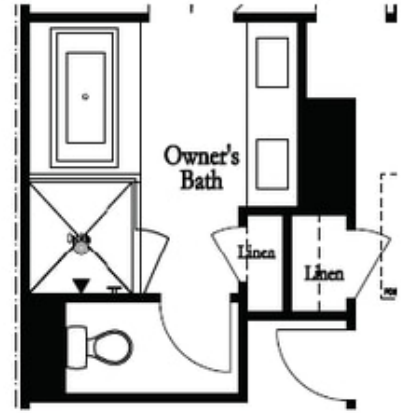
CONTACT OUR NEW HOME NAVIGATOR  
 Call Us @ 470-248-2097



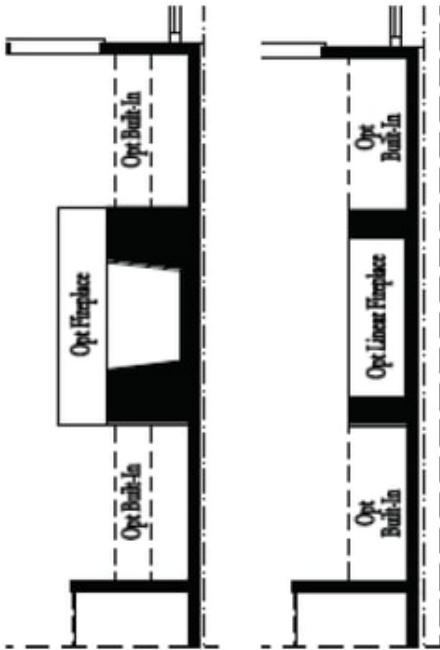
Optional Bath 3 Shower ilo Tub



Optional Owner's Luxury Shower

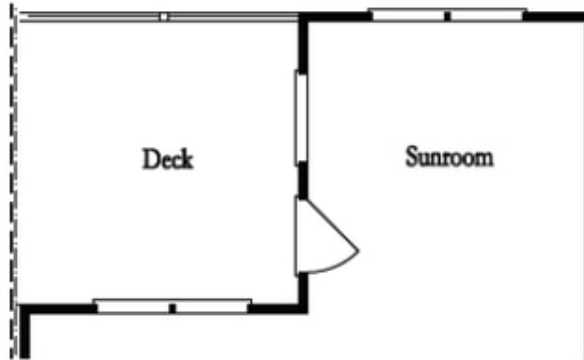


Optional Owner's Shower & Tub

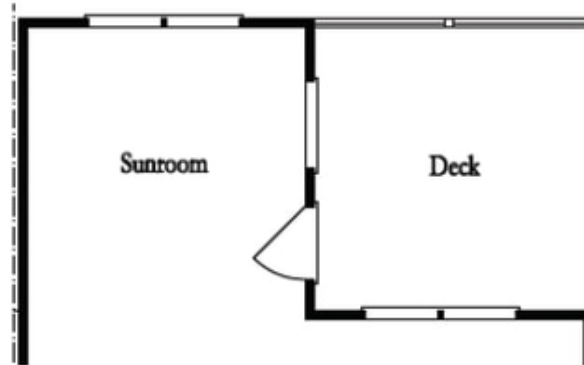


Optional  
 Family Room  
 Fireplace

Optional  
 Family Room  
 Linear Fireplace



Optional Sunroom 1 ilo Extended Deck



Optional Sunroom 2 ilo Extended Deck

**Want to Know More  
 About This Home?**

CONTACT OUR NEW HOME NAVIGATOR  
 Call Us @ 470-248-2097