



PRICED FROM
\$702,300

 2,594 - 2,764 Sq Ft

 3 - 4 Beds

 2.5 Baths

 2 Car Garage

 2.0 Story

- Gourmet Kitchen with Island overlooking Dining and Family Room
- Owner's Suite and Private Bath with Dual Vanities and Over Size Walk-In Closet on Lower Level
- Secondary Bedrooms on Upper Level
- Two Car Garage

[Read More Online](#)

Available Elevations



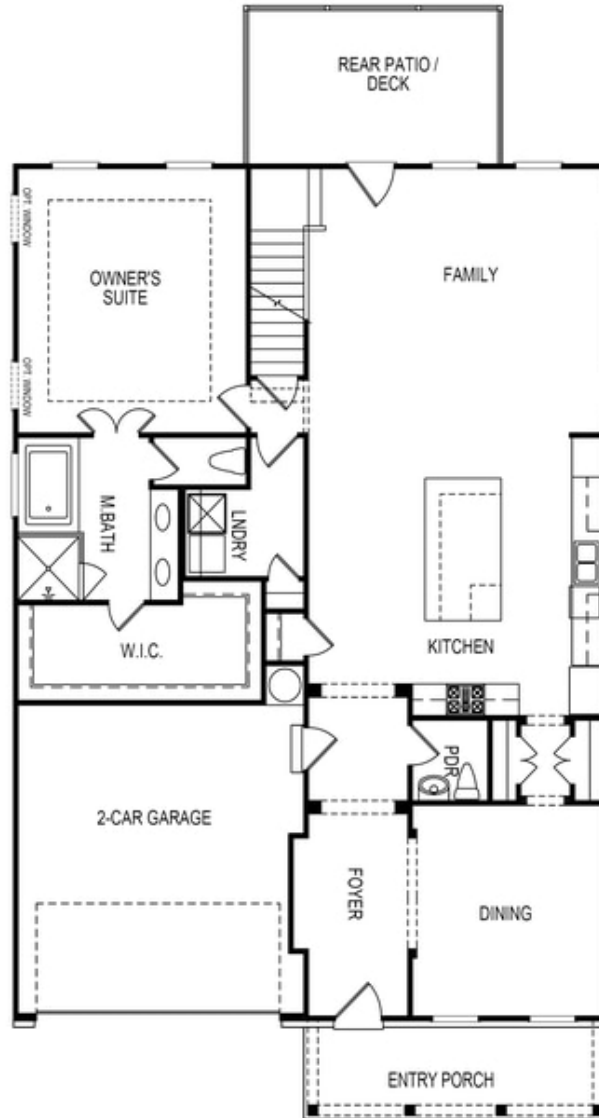
Elevation A



Elevation B



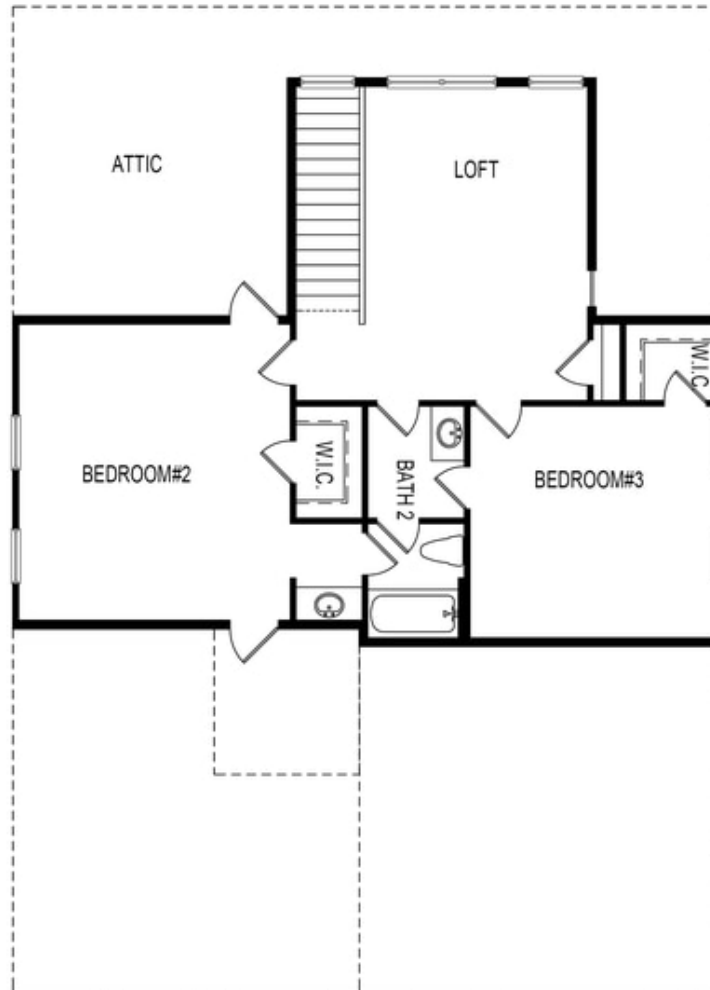
Elevation D



First Floor

Want to Know More
About This Home?

CONTACT OUR NEW HOME NAVIGATOR
Call Us @ 470-248-2097

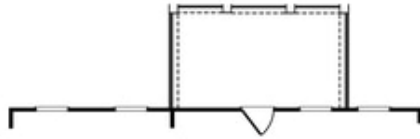


Second Floor

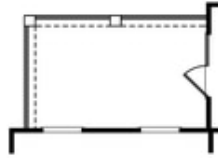
**Want to Know More
About This Home?**

CONTACT OUR NEW HOME NAVIGATOR
Call Us @ 470-248-2097

Options



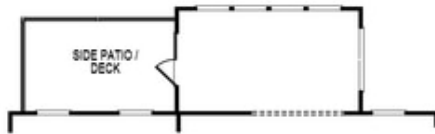
OPT Covered Patio/Deck



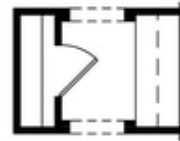
OPT Covered Side Patio/Deck



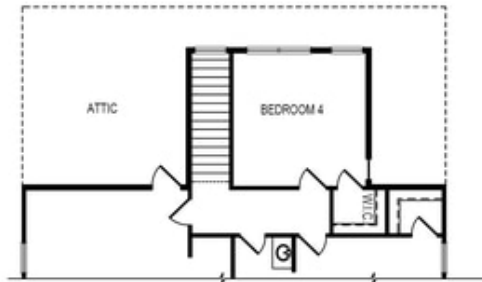
OPT Fireplace
 w. Opt Built-Ins



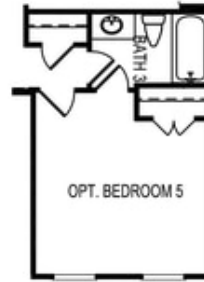
OPT Sunroom



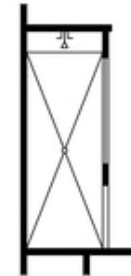
OPT Butler's Pantry



OPT Bedroom 4 ilo Loft



OPT Bedroom 5
 ilo Dining Room



OPT Owner's
 Walk-In Shower

**Want to Know More
 About This Home?**

CONTACT OUR NEW HOME NAVIGATOR
 Call Us @ 470-248-2097