



PRICED AT
\$543,780

 2388 Sq Ft

 3 Beds

 3.5 Baths

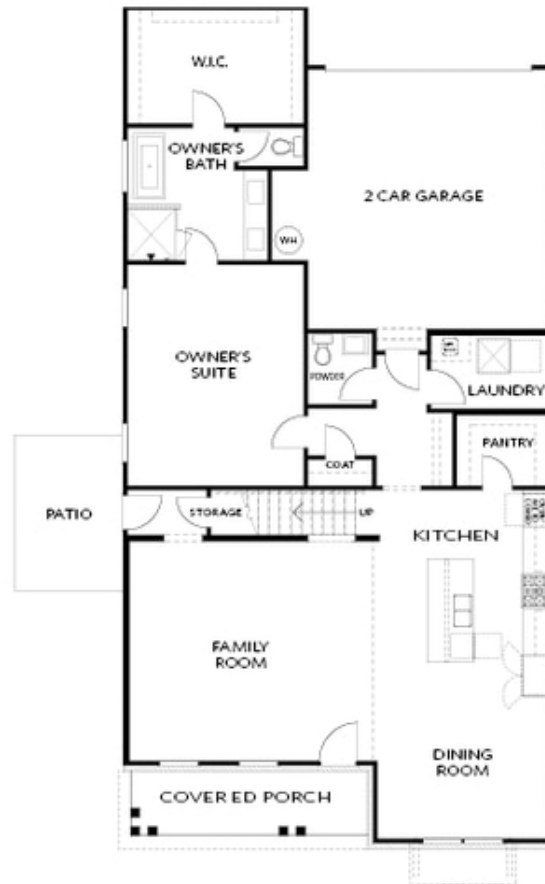
 2 Car Garage

 2.0 Story

The Hampton II - Must see this amazing rear entry courtyard park setting homesite! Ready for early 2023 move in. Master on main offers 3 bedrooms upstairs- 2 of the bedrooms share a jack and jill style bath and the other bedroom has it's own private bath! This is one of our most open floor plans and it features a very large kitchen cabinets all the way up to the 10 foot ceiling! Your large island has unrestricted views to the dining area and great room. Private side patio for privacy! The big front porch over looks the largest park here in Idylwilde!. Worried about storage? This plan also has some great walk in storage upstairs. Idylwilde is a beautiful, Gated, modern farmhouse themed community here in the Hickory Flat Cherokee County! HOA maintained homesites- NO mowing for you! Come visit us and see our incredible amenity package! Gorgeous Clubhouse, Super fun Pickleball courts, community garden, walking trails, and amazing resort style pool! Come visit one of The Providence Group's beautiful neighborhood! Many master on main inventory and various homes in many stages of construction and Presale opportunities for slabs and basements to meet your new home construction needs.

**Want to Know More
About This Home?**

CONTACT OUR COMMUNITY SALES MANAGER
Call Us @ 470.509.9931



FIRST FLOOR

Elevation B

**Want to Know More
About This Home?**

CONTACT OUR COMMUNITY SALES MANAGER
Call Us @ 470.509.9931



SECOND FLOOR

Elevation B

Want to Know More
About This Home?

CONTACT OUR COMMUNITY SALES MANAGER
Call Us @ 470.509.9931



OPT Walk-In Shower



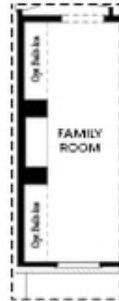
OPT Open Rail



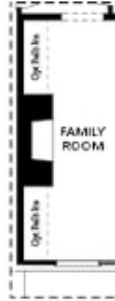
OPT Open Rail



OPT Side Windows



OPT Lenier Fireplace



OPT Fireplace



OPT BDR 4 ilo Loft

FIRST FLOOR

SECOND FLOOR

Elevation B

**Want to Know More
 About This Home?**

CONTACT OUR COMMUNITY SALES MANAGER
 Call Us @ 470.509.9931