



PRICED AT
\$558,905

 **2205 Sq Ft**

 **4 Beds**

 **3.5 Baths**

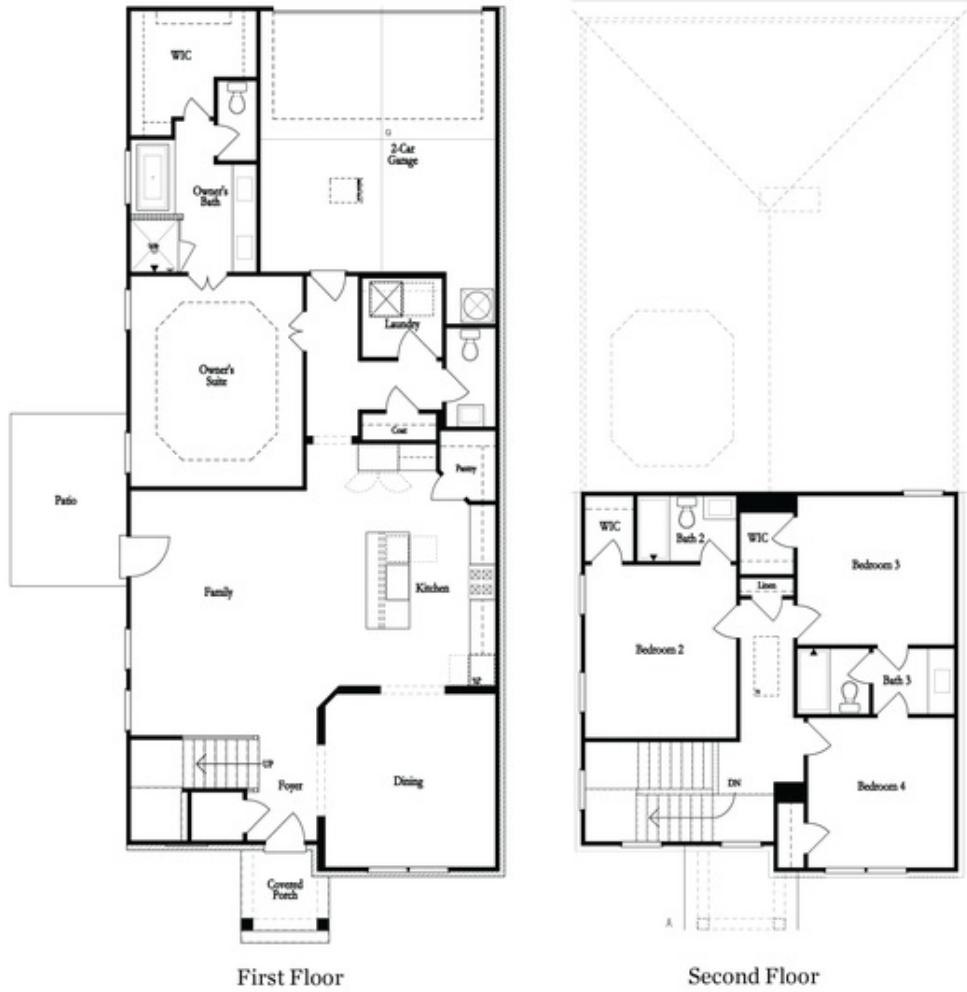
 **2 Car Garage**

 **2.0 Story**

ELEVATE YOUR LIFE IN 2023!! Charleston C Home Design - Spacious open floor plan features owner suite on main level with over sized walk in closet and spa bath. The mega shower is fully tiled from floor to ceiling and has matte black rainhead and hardware. This spacious kitchen has an oversized pantry, beautiful designer finishes include quartz countertops, White stacked cabinets and a dark dramatic Navy colored island. Overlooking the island, you have views to the family room with painted brick fireplace. The first floor soars with 10 feet ceilings and has 7 foot windows and solid 8 foot doors which give this plan a grand feeling. Large walk in laundry room off owners suite and half bath on main level. Head upstairs to find 3 secondary bedrooms with two baths. There is plenty of attic storage space on the 2nd floor! The two car garage is in the rear with a long driveway and yard. There are tons of upgrades added to this premier home by The Providence Group. The target move in date will be April . Gated, modern farmhouse themed community here in Cherokee County! HOA maintained homesites- with an incredible amenity package! Clubhouse, Pickleball, community ...

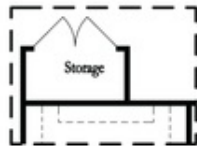
**Want to Know More
About This Home?**

CONTACT OUR COMMUNITY SALES MANAGER
Call Us @ 470.509.9931

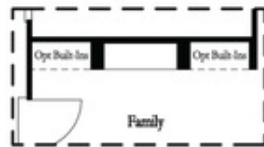


Want to Know More
About This Home?

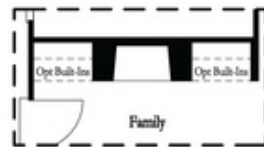
CONTACT OUR COMMUNITY SALES MANAGER
Call Us @ 470.509.9931



Optional Storage Room

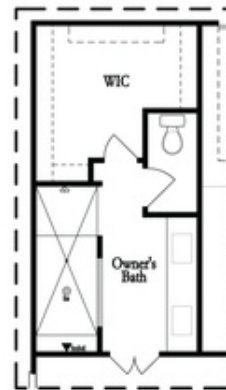


Optional Linear Fireplace



Optional Direct Vent Fireplace

First Floor Options



Optional Walk-Thru Shower

Second Floor Options

Want to Know More
 About This Home?

CONTACT OUR COMMUNITY SALES MANAGER
 Call Us @ 470.509.9931