








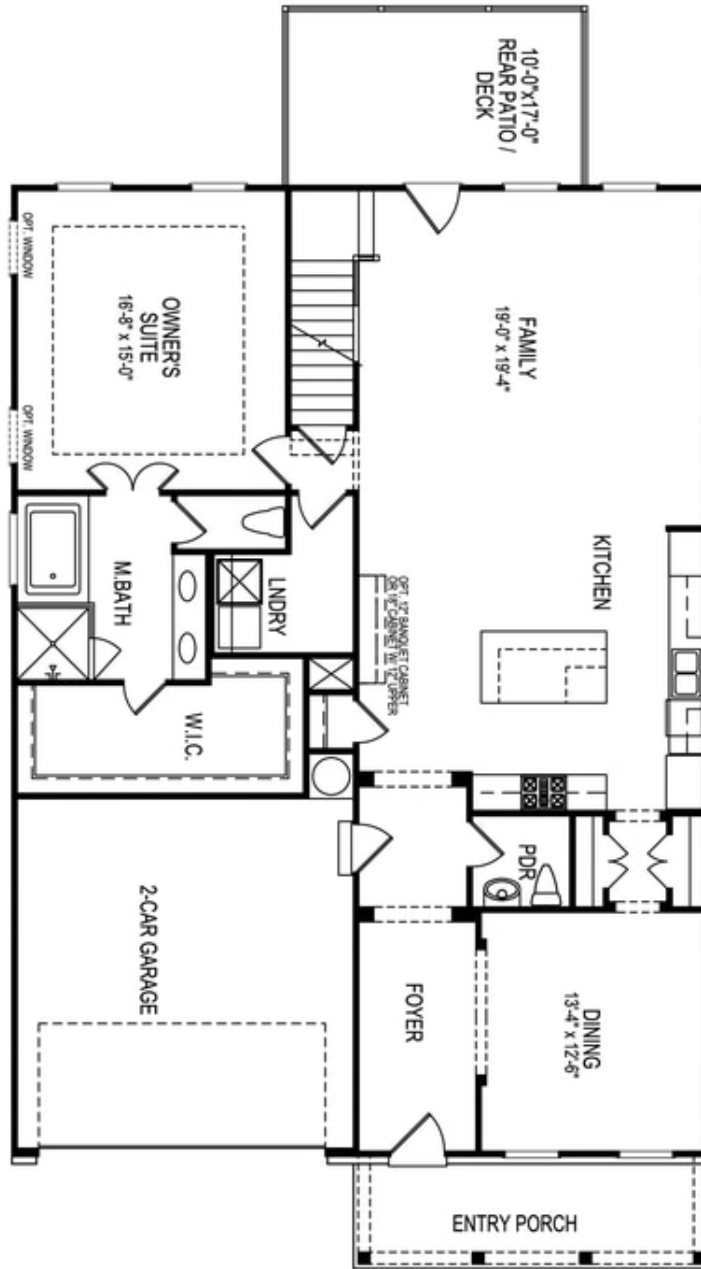
PRICED AT
\$678,143

-  2500 Sq Ft
-  3 Beds
-  2.5 Baths
-  2 Car Garage
-  2.0 Story

New Year, New Home, New You! This open plan has tons of natural light! Amazing gourmet kitchen offers white stacked cabinets to the ceiling, large island with extra storage, mosaic hexagon tile backsplash & gorgeous quartz countertops. The walk thru to the Formal dining room has a butlers pantry for dinner party convenience. Warm up to the stacked white quartzite fireplace in the family room or lounge in the spacious all glass sunroom on lazy afternoons. The Owners Suite is on the MAIN floor and has a tray ceiling, spacious WIC and an owners bath with mega shower that is a must see! On the upper floor you will find a huge loft area - perfect for media room, home office or exercise space. 2 additional secondary bedrooms and a shared bath are also on the 2nd floor. **TONS OF STORAGE.** The flat yard is private and lined with giant green trees for extra privacy on the covered patio. This home has all of the fabulous finishes the Providence Group has to offer. We will be finishing this home by the end of year. Perfect for the Holidays!! Elevate your Life in 2023 with \$10,000 towards closing costs with one ...

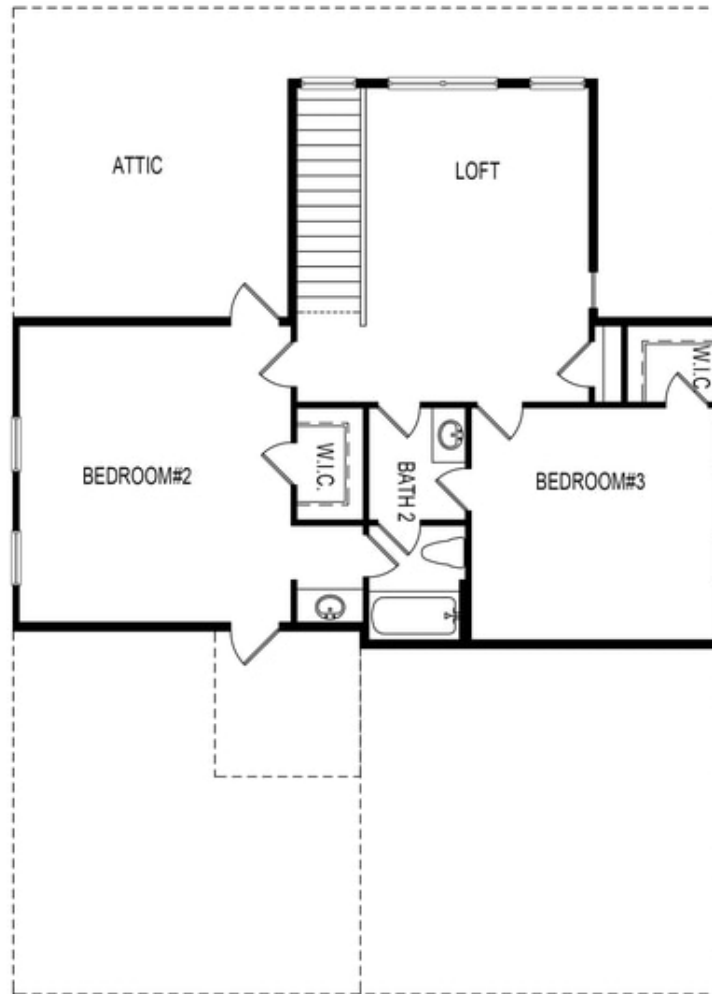
**Want to Know More
About This Home?**

CONTACT OUR COMMUNITY SALES MANAGER
Call Us @ 470.509.9931



Want to Know More
About This Home?

CONTACT OUR COMMUNITY SALES MANAGER
Call Us @ 470.509.9931

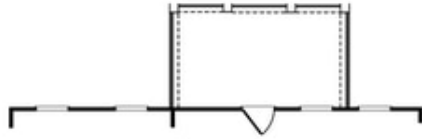


Second Floor

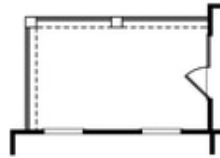
**Want to Know More
About This Home?**

CONTACT OUR COMMUNITY SALES MANAGER
Call Us @ 470.509.9931

Options



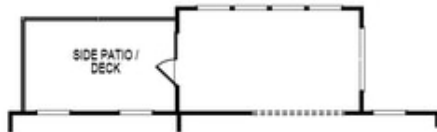
OPT Covered Patio/Deck



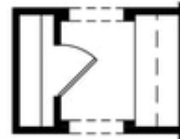
OPT Covered Side Patio/Deck



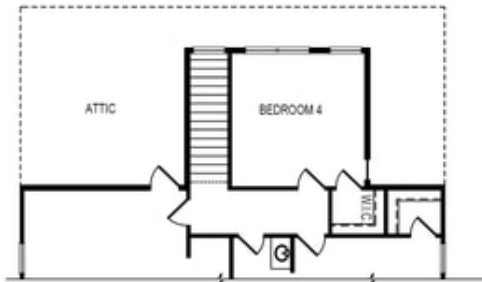
OPT Fireplace
 w. Opt Built-Ins



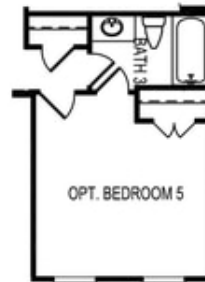
OPT Sunroom



OPT Butler's Pantry



OPT Bedroom 4 ilo Loft



OPT Bedroom 5
 ilo Dining Room



OPT Owner's
 Walk-In Shower

**Want to Know More
 About This Home?**

CONTACT OUR COMMUNITY SALES MANAGER
 Call Us @ 470.509.9931