



PRICED AT
\$661,945

 2500 Sq Ft

 3 Beds

 2.5 Baths

 2 Car Garage

 2.0 Story

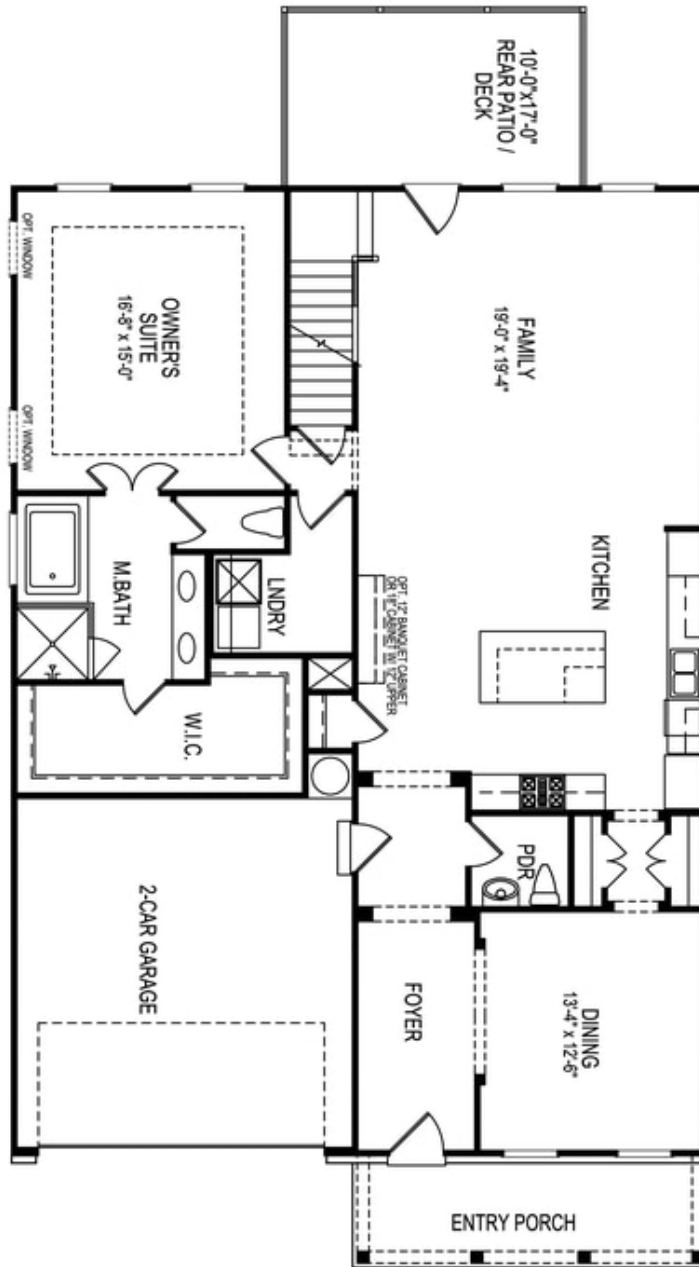
Welcome home to the Madilyn floorplan. This open plan has tons of natural light! Amazing gourmet kitchen offers white stacked cabinets to the ceiling & dark dramatic navy island with extra storage & gorgeous quartz countertops. The huge island is perfect for entertaining and features oversized gold pendant lights and a farmhouse sink. The walk thru to the Formal dining room has a butlers pantry for dinner party convenience. Warm up to the painted brick fireplace in the family room or lounge in the spacious all glass sunroom on lazy afternoons. This MASTER ON MAIN has a tray ceiling and an owners bath mega shower that is a must see! Head to the 2nd floor fore secondary bedrooms, shared bath and a large loft that would make a great home office or media room. TONS OF STORAGE . The flat yard is private and lined with giant green trees for extra privacy on the covered patio. This home has all of the fabulous finishes the Providence Group has to offer. We will be finishing this home by the end of year. Perfect for the Holidays!! Elevate your Life in 2023 with \$5000 towards closing costs with one of our 4 preferred ...

**Want to Know More
About This Home?**

CONTACT OUR NEW HOME NAVIGATOR

NONE

Call Us @ (470) 509-9931

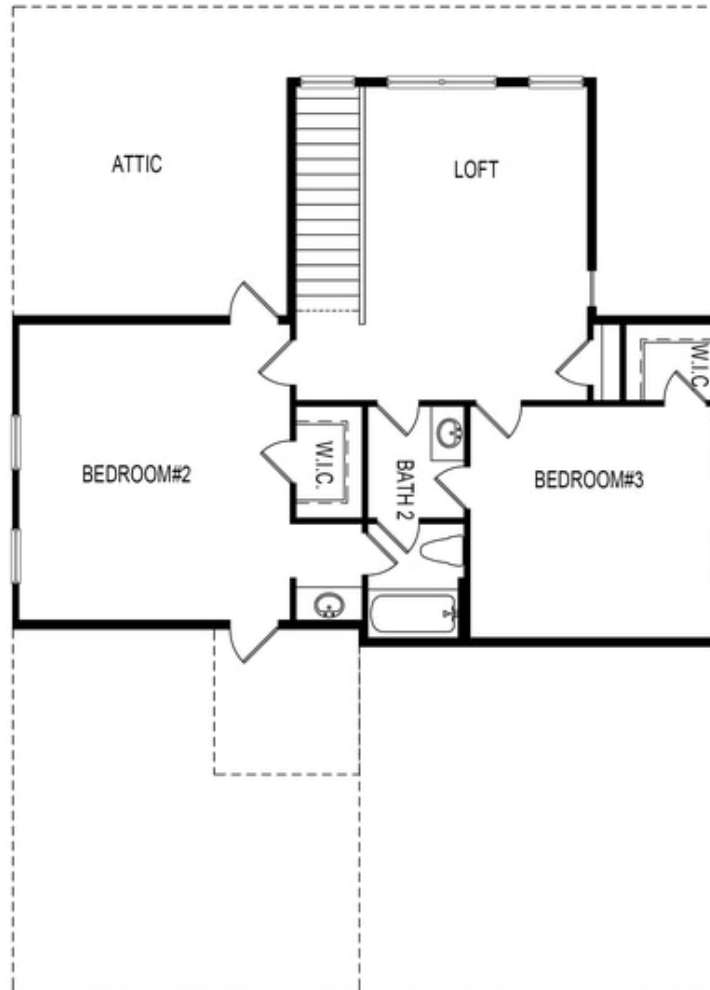


Want to Know More
About This Home?

CONTACT OUR NEW HOME NAVIGATOR

NONE

Call Us @ (470) 509-9931



Second Floor

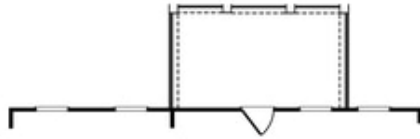
**Want to Know More
About This Home?**

CONTACT OUR NEW HOME NAVIGATOR

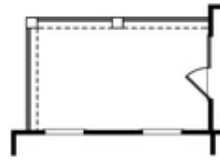
NONE

Call Us @ (470) 509-9931

Options



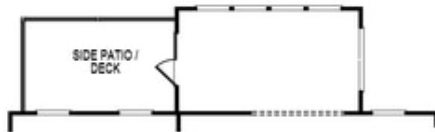
OPT Covered Patio/Deck



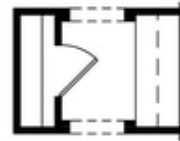
OPT Covered Side Patio/Deck



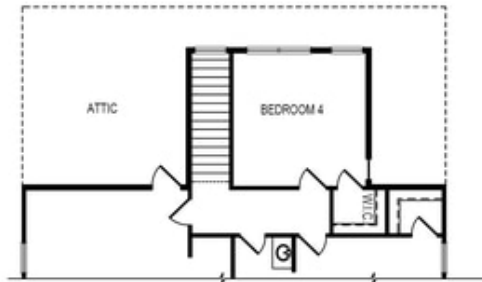
OPT Fireplace
 w. Opt Built-Ins



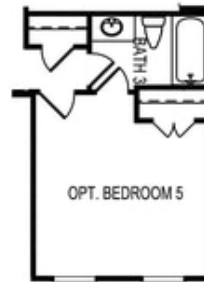
OPT Sunroom



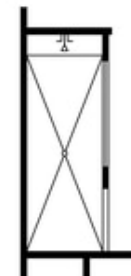
OPT Butler's Pantry



OPT Bedroom 4 ilo Loft



OPT Bedroom 5
 ilo Dining Room



OPT Owner's
 Walk-In Shower

**Want to Know More
 About This Home?**

CONTACT OUR NEW HOME NAVIGATOR

NONE

Call Us @ (470) 509-9931