



PRICED AT
\$654,625

 2205 Sq Ft

 3 Beds

 2.5 Baths

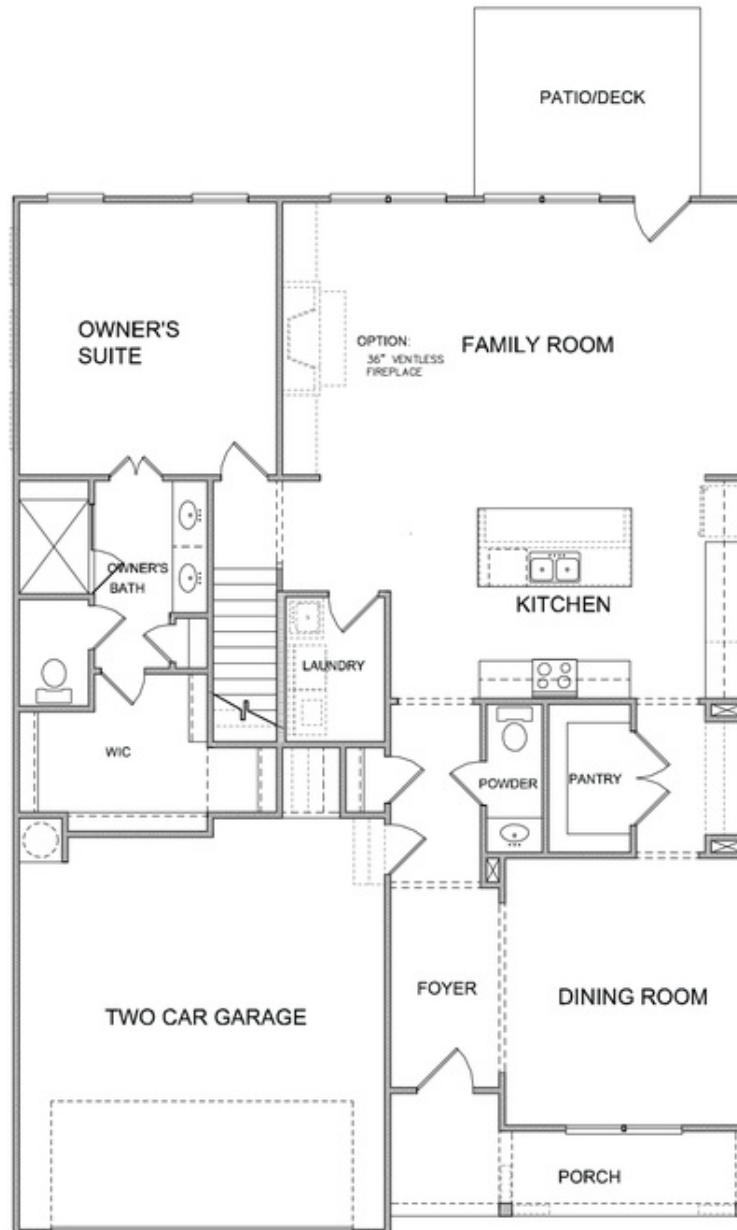
 2 Car Garage

 2.0 Story

Fall into Savings applied when closed by end of November! The UNFINISHED BASEMENT space of this farmhouse-style home presents a canvas of possibilities, awaiting the vision and creativity of its future owner. The Morgan on homesite 92 is nestled on a tranquil wooded lot evoking a sense of rustic charm and modern comfort. Upon entering, you step into a welcoming foyer that seamlessly transitions into an open concept floorplan. The kitchen boasts custom cabinetry, quartz countertops and high-end stainless steel appliances. An oversized island overlooks the family room and provides the perfect spot for casual dining. The family room features a cozy fireplace as its focal point and the 10' ceilings offers a spacious and airy ambiance. Easy access from the family room to a covered porch that offers a versatile space for relaxation, entertainment and enjoying the outdoors in comfort. A separate dining room is connected to the kitchen via a convenient walk-through butler's pantry, blending traditional sophistication with modern convenience. The owners suite, conveniently located on the mail level, offers a peaceful retreat after a long day. With its spacious layout and luxurious amenities providing the ultimate in relaxation and comfort. Adjacent to the sleeping area is the ...

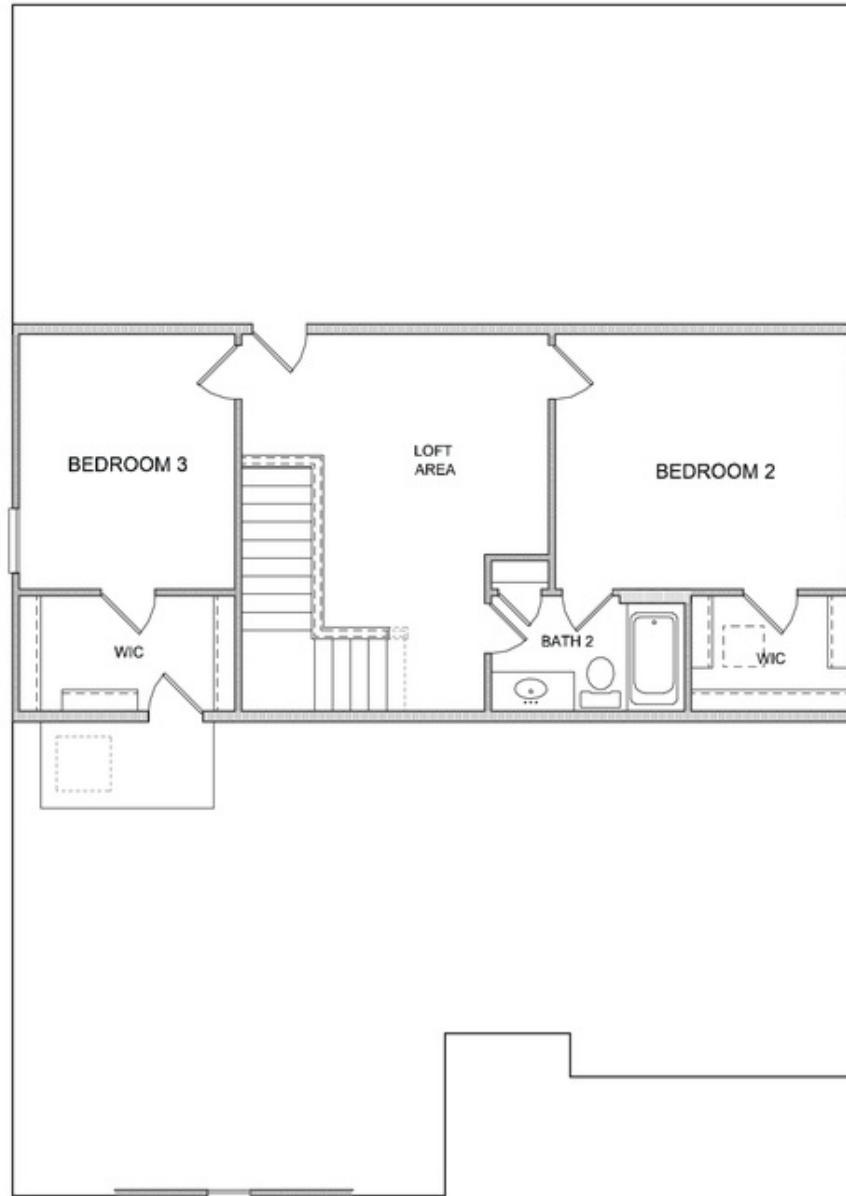
Want to Know More
About This Home?

CONTACT OUR COMMUNITY SALES MANAGER
Call Us @ 470.509.9931



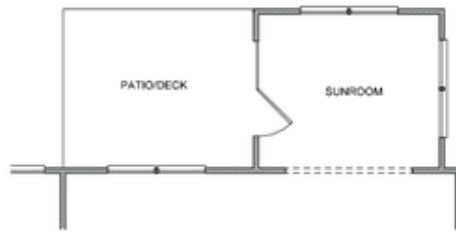
Want to Know More
About This Home?

CONTACT OUR COMMUNITY SALES MANAGER
Call Us @ 470.509.9931

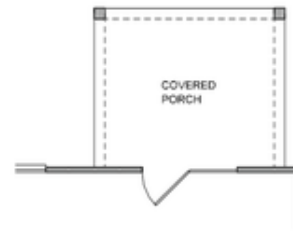


Want to Know More
About This Home?

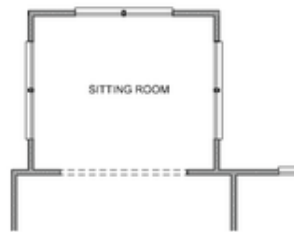
CONTACT OUR COMMUNITY SALES MANAGER
Call Us @ 470.509.9931



Opt. Sunroom



Opt. Covered Porch



Opt. Sitting Room

Want to Know More
About This Home?

CONTACT OUR COMMUNITY SALES MANAGER
Call Us @ 470.509.9931