



PRICED AT
\$682,750

 **2205 Sq Ft**

 **3 Beds**

 **2.5 Baths**

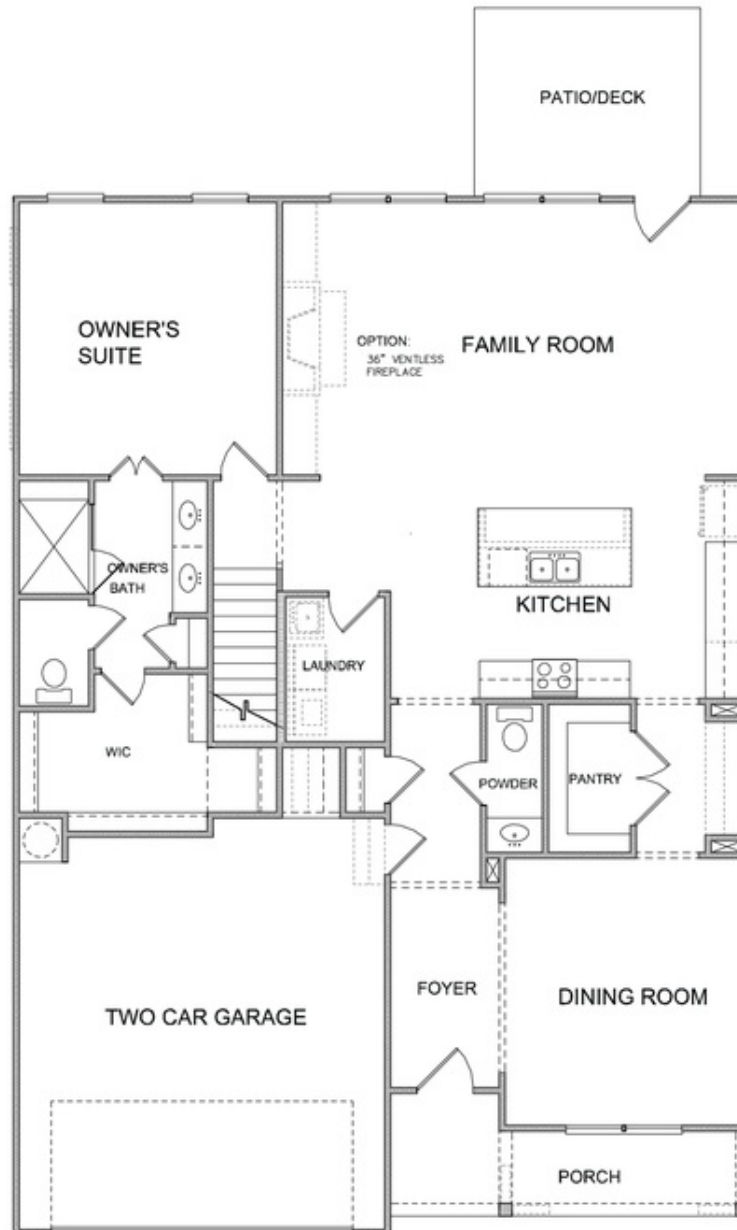
 **2 Car Garage**

 **2.0 Story**

HOLIDAY SAVING! \$25,000 to use ANY WAY YOU WANT for contracts written by the end of the year and when using one of our 5-Preferred Lenders. THIS IS THE FINAL OPPOTUTNITY IN IDYWILDE FOR THIS UNFINISHED BASEMENT HOME. This open plan has tons of natural light! The Morgan features a separate dining room with a pass through butlers pantry and **HUGE** walk in pantry. Beautiful White cabinets with 42" uppers around the perimeter of the kitchen have soft close doors and drawers while the navy kitchen island is oversized and overlooks the family room. The herringbone tile backsplash and the quartz countertops add sophistication to the kitchen design. The shiplap wrapped fireplace creates a cozy tone in the family room. The wooded private homesite features a twelve foot sliding glass door that opens to a twenty foot **COVERED** deck. This feature will enhance the outside living experience. **OWNERS SUITE ON MAIN** with beautiful en-suite featuring a double vanity and large walk-in tile shower. There are two large secondary bedrooms on the second floor with a loft and tons of attic storage. All the closets are walk in and the bathroom is accessible to the larger bedroom. The basement will mirror ...

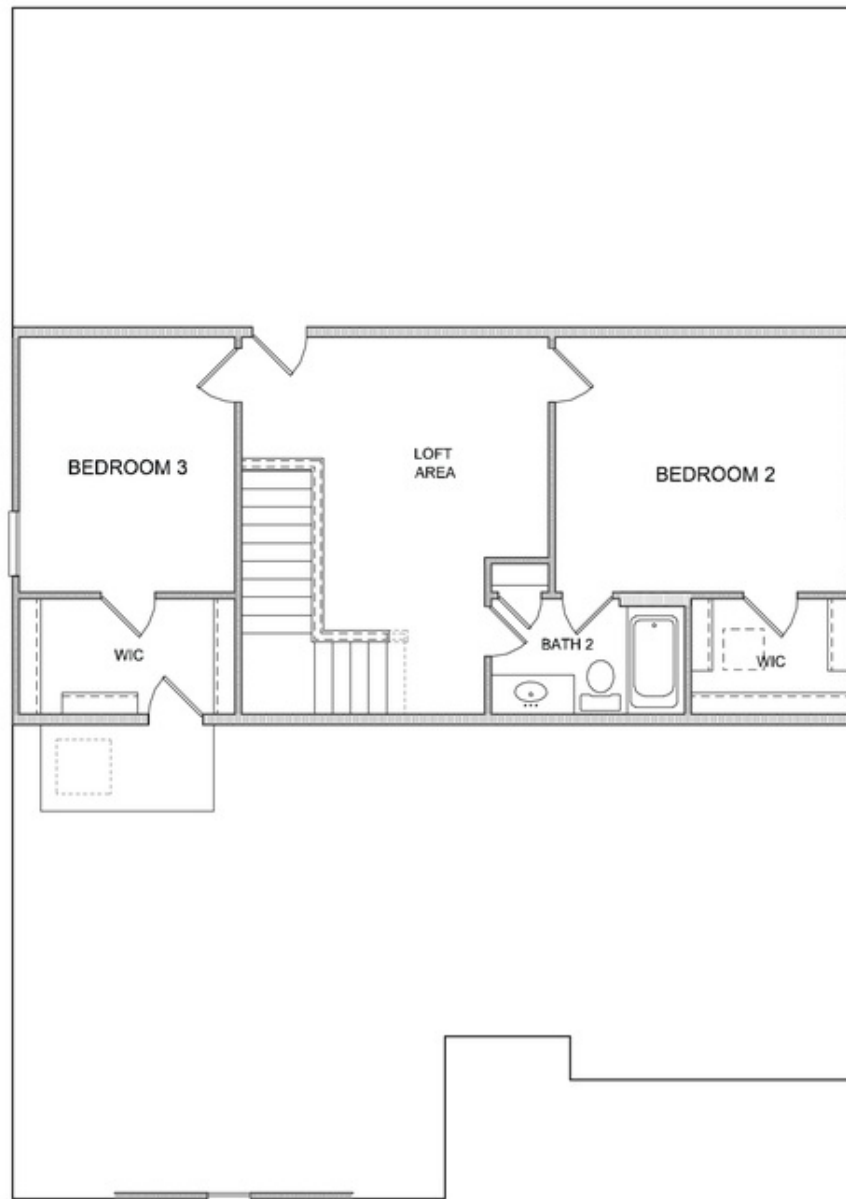
**Want to Know More
About This Home?**

CONTACT OUR COMMUNITY SALES MANAGER
Call Us @ 470.509.9931



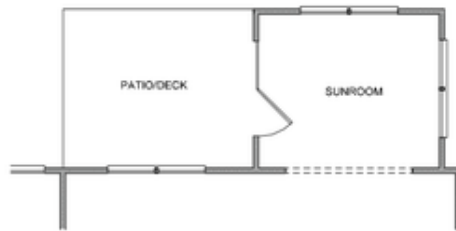
Want to Know More
About This Home?

CONTACT OUR COMMUNITY SALES MANAGER
Call Us @ 470.509.9931

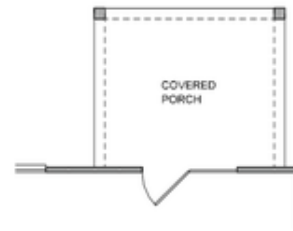


Want to Know More
About This Home?

CONTACT OUR COMMUNITY SALES MANAGER
Call Us @ 470.509.9931



Opt. Sunroom



Opt. Covered Porch



Opt. Sitting Room

Want to Know More
About This Home?

CONTACT OUR COMMUNITY SALES MANAGER
Call Us @ 470.509.9931